

**'Continued legacies of Hiroshima'**

Ritsumeikan Asia Pacific University

Lecture for class of Prof. Mahichi, 9 November 2012

Nassrine Azimi, Co-Founder/Coordinator Green Legacy Hiroshima;  
by Senior Advisor, United Nations Institute for Training and Research

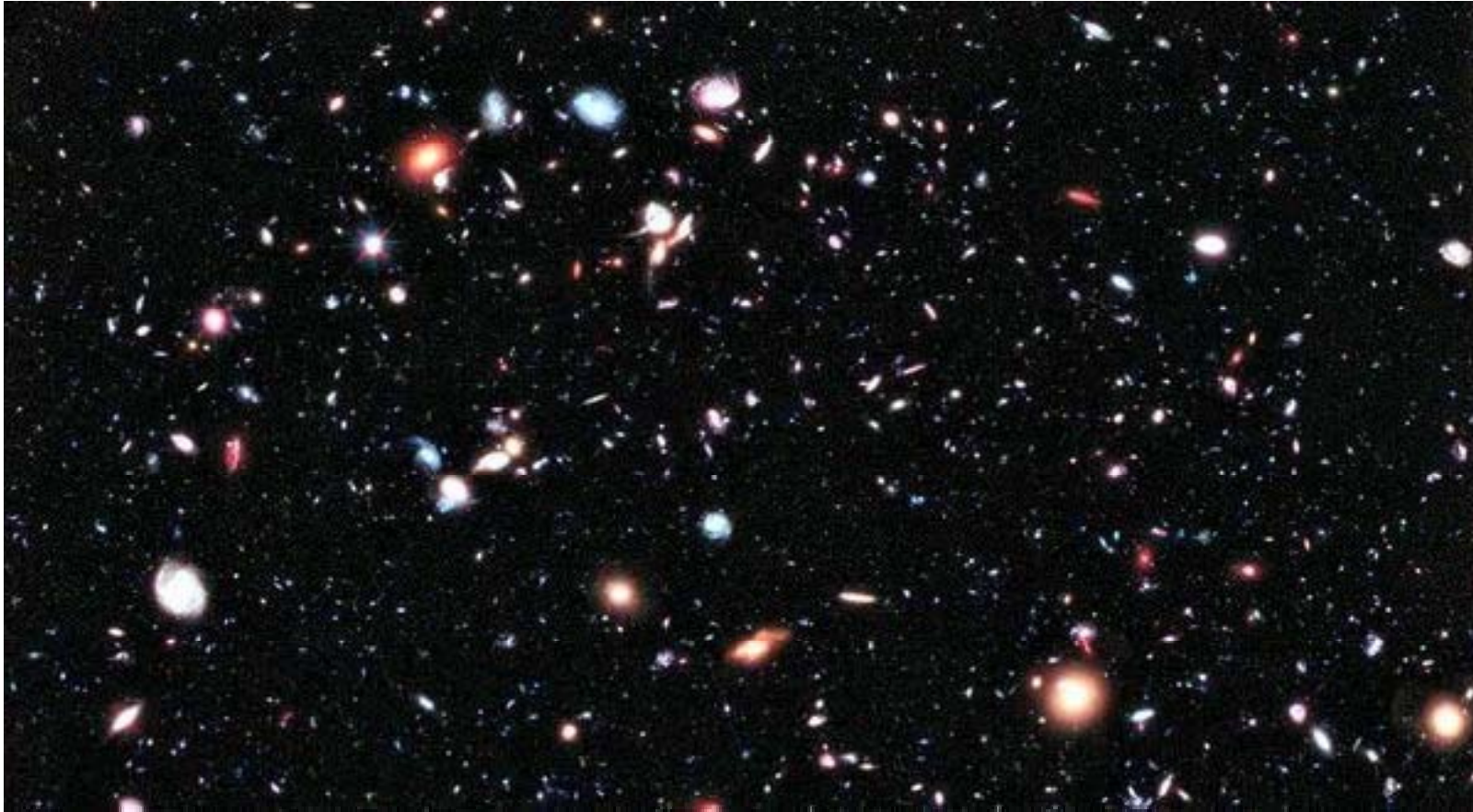
**'Does the flap of a butterfly's wings in Brazil set off a tornado in Texas?'**

Edward Lorenz (1917-2008)

**'The 21st century will be spiritual, or it will not be'**

Andre Malraux (1901-1976)

‘Continued legacies of Hiroshima’



### **Hubble's 13.2 Billion Light-Year Squint**

This is the farthest that the Hubble Space Telescope will ever see. Some of the flecks of light in this photo are infant galaxies as they existed only half a billion years after the Big Bang. (from The New York Times, October 1, 2012)



Backdropped by the blackness of space and Earth's horizon, the International Space Station and Space Shuttle Atlantis move farther apart at the end of STS-117's mission, during which the shuttle and station crews concluded about eight days of cooperative work. Image Credit - NASA



Where is Curiosity? Anywhere between... 54 and 401 million kilometers from Earth....(Image Credit: NASA/JPL)





## Hiroshima City, 1945



## Shinzo Hamai, Hiroshima post-war mayor (1947-55 & 1959-67)

- Hiroshima Peace Declaration, Aug. 6, 1948, by Mayor Shinzo Hamai ([www.city.hiroshima.lg.jp/shimin/heiwa/pd1948e.html](http://www.city.hiroshima.lg.jp/shimin/heiwa/pd1948e.html))
- 'Geneva of Asia'
- Hiroshima Peace Memorial Reconstruction Act of 1949
- Kenzo Tange plan of 1949





### **Hiroshima's foundations for resurrection:**

- To forgive but not to forget;
- Never again (to nuclear weapons)
- Transformation from a military city to a city of peace

## Stockholm International Peace Research Institute (SIPRI) 2012 Yearbook

Military expenditure...

World military expenditure did not increase in 2011, for the FIRST time since 1998. The world total for 2011 is estimated to have been \$1738 billion, representing 2.5 per cent of global gross domestic product or **\$249 for each person** (on the planet).

**But it did not diminish either (vs. Health and Education sectors, which did).**

**And the exceptions**

**n.b. spending in b. US\$ and (increase over previous year)**

**Africa -- 34.3 (8.6%)**

**Middle East -- 123 (4.6%)**

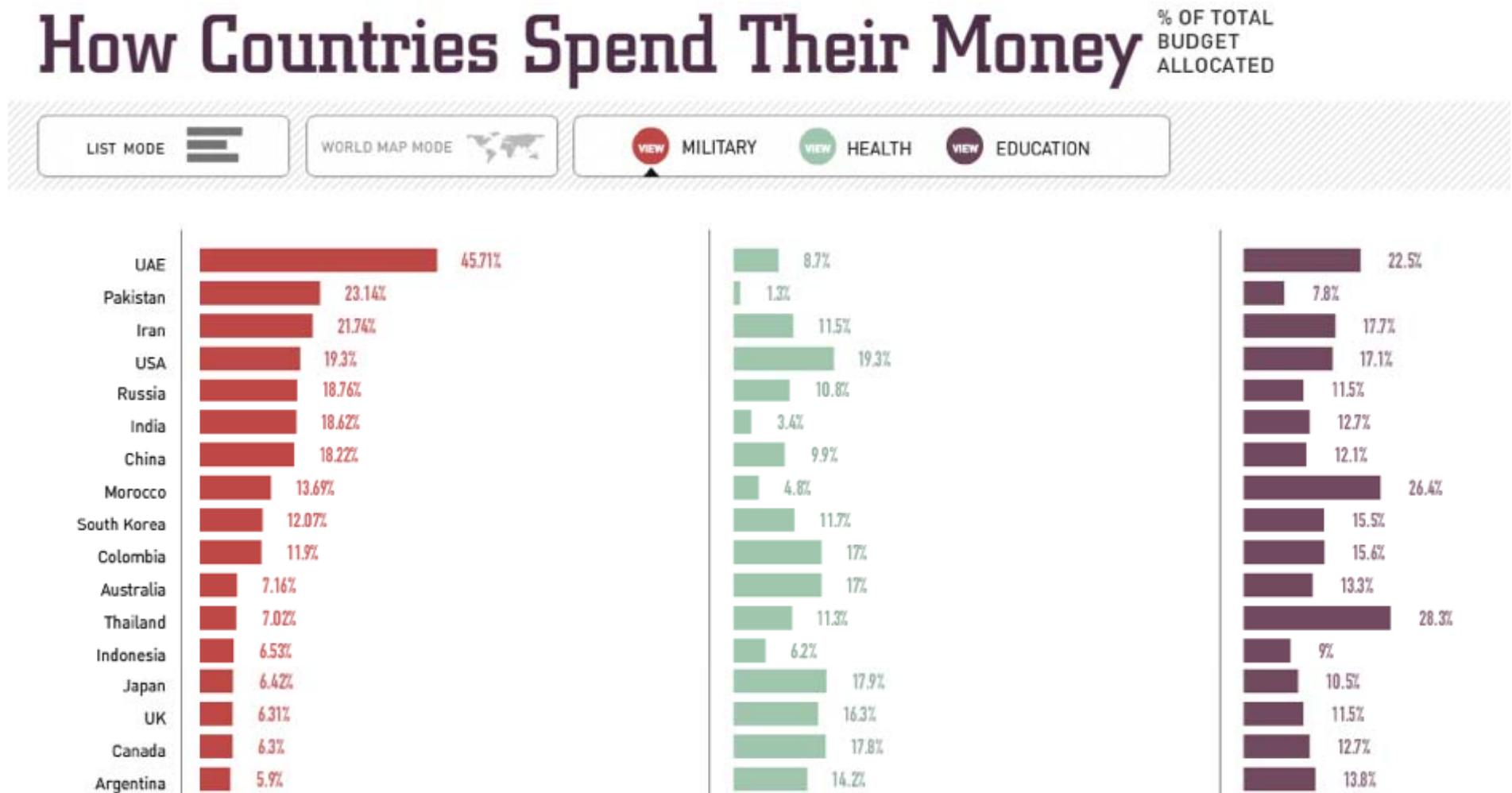
**Eastern Europe 80.5; (10.2)**

**World total (on military spending) -- 1738; (0.3)**



## Expenditures on military vs health and education

- <http://visualeconomics.creditloan.com/how-countries-spend-their-money/>



# Green Legacy Hiroshima

## The universal power of symbols?

Few trees survived the atomic bombing - yet the new sprouts of the ones that did become the embodiment of hope for survivors. About 170 trees in some 55 locations within the roughly 2 km radius of epicenter, officially registered by Hiroshima City as A-bombed trees or “Hibakujumoku



**Weeping willow (*Salix babylonica*) near Hijiya park**



## A-bombed Eucalyptus - then and today



## A-bombed Kurogane holly - then and today





# Green Legacy Hiroshima



**Ginkgo tree (*Ginkgo biloba*)**



**Chinese parasol trees (*Firmiana simplex*)**



# Green Legacy Hiroshima

## Engaging the public?

**Botanic Garden of Irkutsk State University**  
Russia



# Green Legacy Hiroshima

**Kirstenbosch National Botanical Garden**  
The Republic of South Africa



# Green Legacy Hiroshima

