

APU

UNDERGRADUATE PROSPECTUS 2008

Challenge



Ritsumeikan
Asia
Pacific
University

立命館アジア太平洋大学

Japan

Aim for the extraordinary

Ritsumeikan Asia Pacific University (APU) offers a unique life-transforming educational experience and a community of inspiring students, faculty, and alumni, almost half of whom are from 78 nations and regions outside Japan.

Each year APU invites distinguished leaders, including Nobel Prize winners, current and former Presidents, as well as captains of enterprises, to speak at the university. This international exchange with leading experts stimulates students and prepares them to understand key aspects of an organization, develop strategies, communicate ideas, and motivate people to action.

We have just commenced implementing APU's strategic plan, the New Challenge, for the period 2006-2009. We have commenced working with the United Nations and other international bodies, in partnership with governments and industry, to deal with critical issues that the world faces in fields such as human security and global governance, environmental and health management, information and communication technology development, and tourism hospitality and heritage management. Five new Institutes have been established to cover these fields, while our two existing faculties will each develop further around four clusters of academic excellence.

The following pages bring to life the APU experience. Time spent with us will not only allow you to realize your ambitions, but to raise your sights and broaden your horizons. As you explore this brochure, imagine what APU can do for you.



Monte Cassim

Professor

President
Ritsumeikan Asia Pacific University
Vice-Chancellor,
Ritsumeikan Trust

PROFILE

President Cassim graduated from the University of Sri Lanka, Colombo in 1970. He came to Japan in 1972 to pursue his Masters and Doctoral studies at the University of Tokyo. His current research interest is in environmental science, health informatics, and knowledge discovery for policy development. Prior to his current appointment he was Executive Director of the Ritsumeikan Center for Global Education and Research. His hobbies include cars, music, reading and travel.

APU's Mission

Since the beginning of human history, human beings have attempted to create their own distinctive cultures and develop civilizations in the various regions of the world. They have also had to overcome many constraints and obstacles in order to achieve their goal of living in conditions of freedom, peace and humanity.

The twentieth century was an era of rapid progress and unprecedented advance in the political, economical and cultural fields, as human activity increasingly took place on a global scale. Through the experience of the two World Wars, the United Nations and other international organizations were formed to enhance cooperation in order to maintain peace and to promote international understanding.

Given that the 21st century will see the emergence of a global society, we firmly believe that coexistence between mankind and nature, as well as between diverse cultures, will be indispensable for the peaceful and sustainable development of the Asia Pacific regions. This is why we are now establishing a university here, to nurture the young talent and to create a new academic discipline which will help shape the region's future.

April 1, 2000 therefore marked the birth of the Ritsumeikan Asia Pacific University (APU), based on a vision of freedom, peace and humanity, international mutual understanding, and the future shape of the Asia Pacific region. The establishment of the University at Jumonjibaru, in Beppu City, has been made possible through the cooperation of the people of Beppu and Oita prefecture, together with many others both within and outside Japan.

Our hope is that it will be a place where the young future leaders from countries and regions throughout the world will come to study together, live together, and understand each other's cultures and ways of life, in pursuit of goals which are common to mankind.

The Ritsumeikan Asia University is hereby declared open.



Contents

03

Developing Human Capital

05

Defining the APU Experience

07

Unique Opportunities

09

Education with You in Mind

11

College of Asia Pacific Studies

15

College of Asia Pacific Management

19

Crossover Advanced Program

23

Seminars

25

Joint Program in Science
and Engineering

27

Graduate School

29

Career Planning

32

Internships

33

Event Schedule
Recreational Clubs and Activities

35

Activities / Facilities

37

Campus Map

39

Accommodation

41

Beppu, a Resort Town

43

Supplementary Data

- Universities and Institutions Affiliated with the Ritsumeikan Trust
- Faculty Members
- Major Employers
- APU Advisory Committee
- Academic Advisors

53

Applications

- Applying
- Scholarships

Developing Human Capital

APU Nurtures Your Potential

Award-Winning Career Program

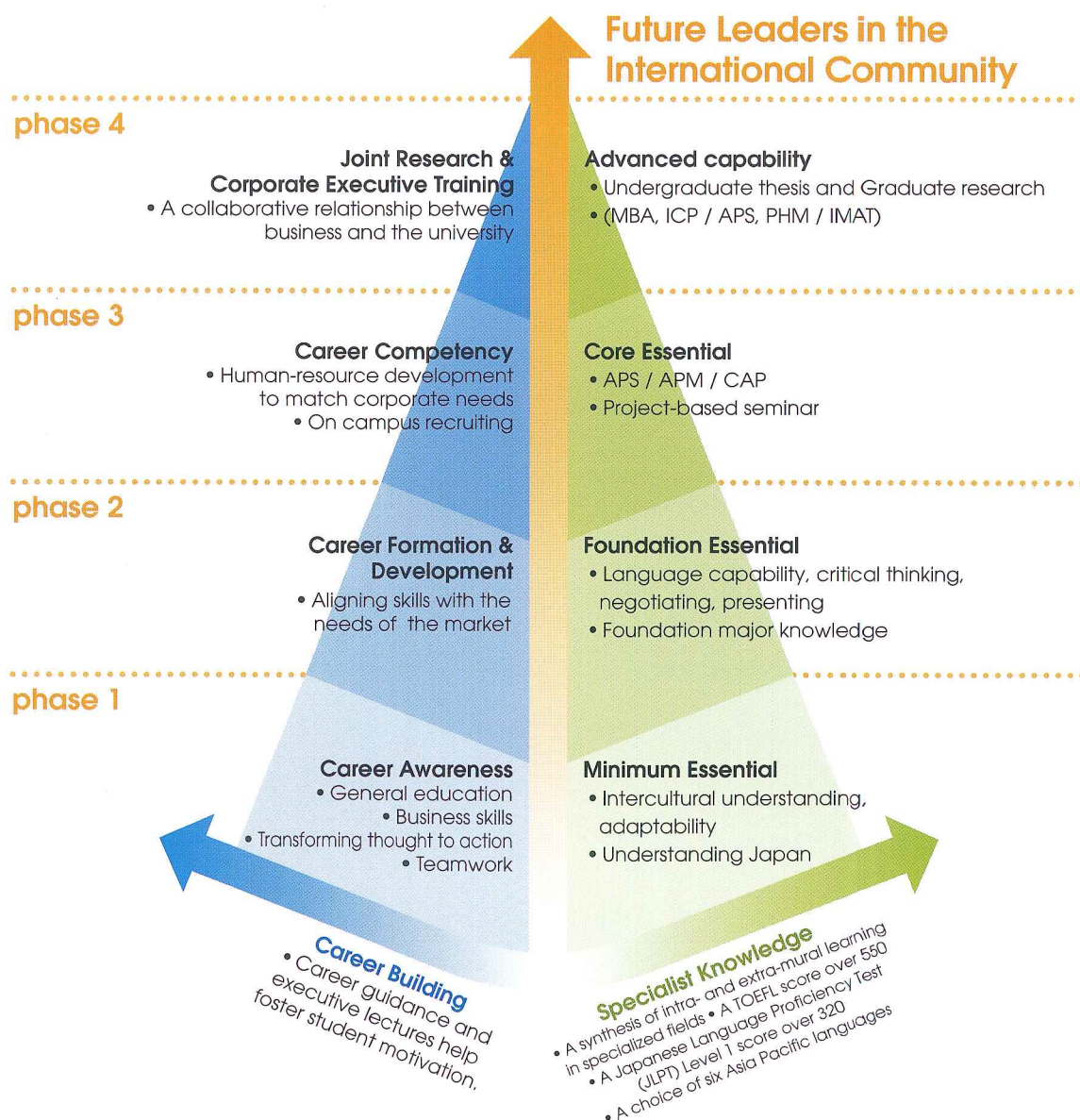
In 2006 APU's career education system was selected for the Ministry of Education, Culture, Sports, Science and Technology's (MEXT) Contemporary Education Needs Initiative Support Program. The Ministry accepted 176 grant applications of which 33 applications for grants were selected.

APU's career-education system integrates language ability, intercultural communication and specialized knowledge. Students are shown how the specialized knowledge they have obtained is put to use in the real world via internships and cooperative lectures developed with our external partners in industry and government.

Individual career counseling from professional staff members and advice from faculty help you refine your internship and long-term goals. This is in addition to the formal recruiting process that brings more than 300 companies to APU each year to make presentations and interview students.

Recent Developments

- APU was recently ranked second by advertising conglomerate Dentsu Kyushu for its "brand power".
- Five new Institutes have been established to cover a number of specialized fields, while our two existing faculties will each develop further around four clusters of academic excellence.
- Facilities that were already among the best in Asia have been expanded. This achievement is fundamental to our goal of increasing our student population and cultural diversity to cover 100 countries.





The Ritsumeikan Trust — Japan's Third Largest Private Educator

- Connecting nearly **45,000** students, the Ritsumeikan Trust ranks as the **third largest private educational institution** in Japan.
- Ritsumeikan University was **founded over 100 years ago**.
- **Ten faculties** (two more planned for 2008) located mainly in **Japan's ancient capital of Kyoto** and Kusatsu in Shiga Prefecture cover a variety of disciplines.
- The **Colleges of Science and Engineering** and the **College of Information Science and Engineering** collaborate with industry and research centers, while the advanced facilities on the Biwako-Kusatsu campus play host to a large number of global research projects.
- **230,000 graduates** are active contributors in **government, industry** and many other areas of society.

The Ritsumeikan Continuum of Education

Ritsumeikan Keisho Junior & Senior High School



Ritsumeikan University (Biwako-Kusatsu Campus)



Ritsumeikan University (Kinugasa Campus)

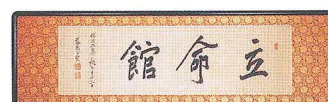
Ritsumeikan Uji Junior & Senior High School



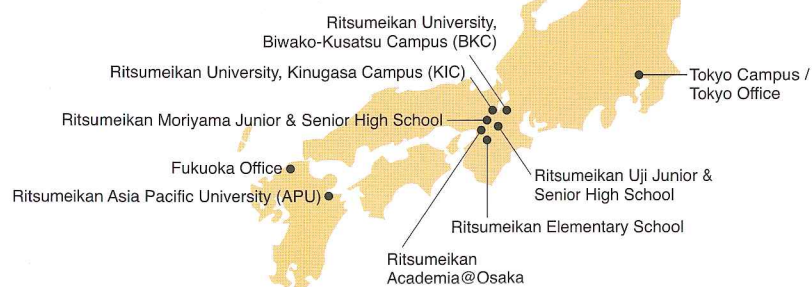
Ritsumeikan Elementary School

Ritsumeikan Keisho Junior & Senior High School

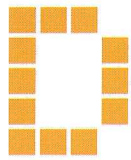
The Origin of the Name "Ritsumeikan"



The word "ritsume" comes from a passage in the Jin-shin chapter of the "Discourses of Mencius" that states: "Some die young, while others live long. It is all Heaven's will. Therefore, people should do their part and leave the rest to Heaven, devoting themselves to self-improvement during their life and fulfilling their destinies." Therefore, Ritsumeikan means, "a place to fulfill one's destiny".



URL: <http://www.ritsumei.ac.jp>



Defining the APU experience



**Nargiza
Usmanova**

University of World Economy
and Diplomacy

Uzbekistan

Here at APU I have had many great experiences that would not have been possible in my home country, from studying fascinating subjects related to the Asia Pacific region at a world-class institution, to being immersed within the diversity and beauty of Japanese culture. I have also been able to make friends with people from all regions of the globe. I owe these numerous and wonderful experiences to APU.



**James
Kanyingi**

Kijabe Boys
High School

Kenya

I yearned to enroll at APU because of its welcoming attitude and international community. I have been able to make many friends from all walks of life, and have established a close network that I hope to maintain after graduating from APU. I am consistently impressed by both the enthusiasm and energy of the professors, and with my achievements as a student under their guidance. The student body's diversity and the faculty's accessibility made it a fabulous place to study. Thanks to all the support and encouragement I received from the Career Office, I was able to secure a great job. In the future I would like to return to APU for my postgraduate studies.

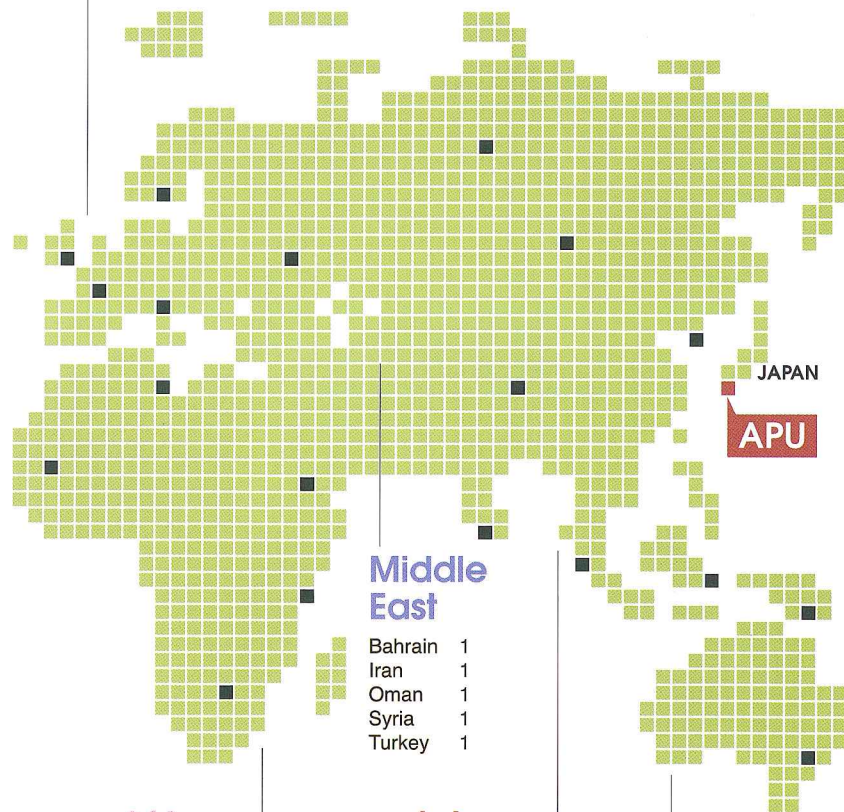
Friends for Life

At APU, friendships extending across national borders are cultivated both on and off campus. The greatest feature of APU is that nearly half of the students and faculty come from countries and regions outside Japan. People of different languages, cultures, religions, and ethnic backgrounds gather at APU to learn and socialize. Friends made during one's days as a student remain friends for life and help nurture a growing international network. Every day is a multicultural experience with a unique atmosphere that cannot be found elsewhere.

Going Global – 78 nationalities

Europe and FSU States

Uzbekistan	20	Hungary	5	Denmark	1
Germany	11	Norway	5	Italy	1
Bulgaria	10	Sweden	5	Latvia	1
Estonia	7	Czech	2	Poland	1
Finland	6	Netherlands	2	Russian Federation	1
Lithuania	6	Romania	2	Serbia	1
United Kingdom	6	Slovakia	2	Ukraine	1
France	5	Switzerland	2		



Middle East

Bahrain	1
Iran	1
Oman	1
Syria	1
Turkey	1

Africa

Kenya	21
Nigeria	11
Ghana	10
Mali	5
Cameroon	4
Uganda	4
Benin	2
Ethiopia	2
Tanzania	2
Comoros	1
Cote d'Ivoire	1
Egypt	1
Gabon	1
Guinea	1
Liberia	1
Malawi	1
South Africa	1
Zambia	1

Asia

Korea	643
China	385
Thailand	212
Vietnam	161
Mongolia	146
Indonesia	140
Taiwan	117
Sri Lanka	56
India	51
Myanmar	44
Bangladesh	39
Nepal	37
Malaysia	25
Philippines	16
Pakistan	10
Singapore	10
Laos	9
Cambodia	4

Oceania

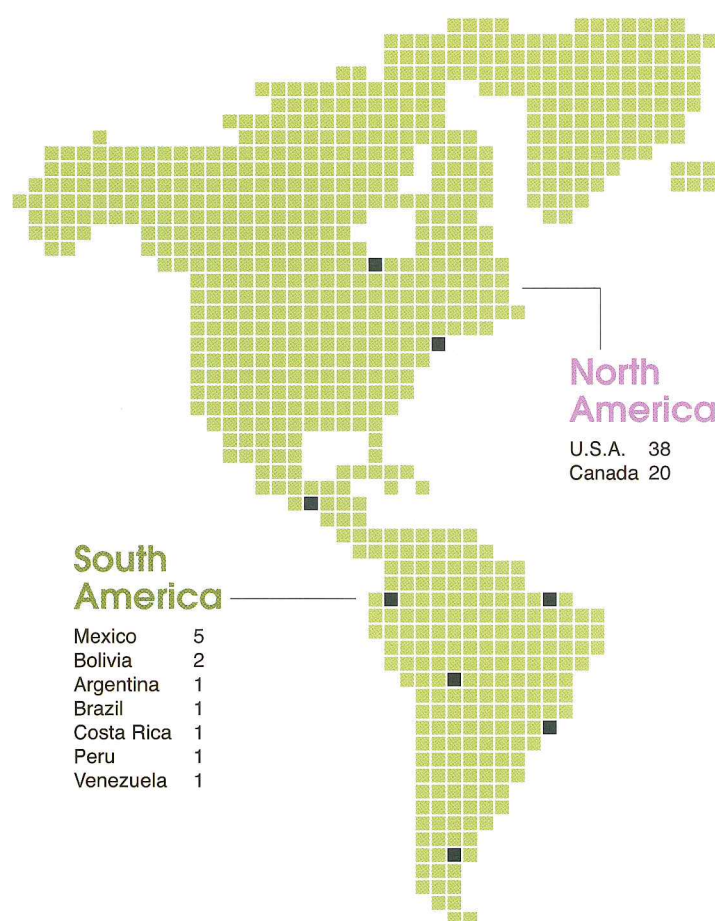
Australia	13
Papua New Guinea	5
Samoa	3
Tonga	3
New Zealand	1

International students **2,378**

Domestic students **3,097**

Total number of students **5,475**

*As of April 1, 2007



Our Lingua Franca

APU's dual language education system means that no Japanese language ability is required for admission to APU. Almost all of the classes for first-and second-year students are offered in both English and Japanese.

Our bilingual education system is attracting attention from around the world, and has already brought us a Good Practice (GP) award from the Japanese Government.



**Zhen
Zhu**

Shanghai Foreign Language
School Affiliated to SISU

China

APU's most attractive aspect is its multicultural campus, with students drawn from 78 countries and regions. Everyday students study, discuss and enjoy friendships with students from across the globe. Such an institution is rare in my country, and in many parts of the world.

During the one and half years I have spent so far at APU, the multicultural campus has never ceased to surprise, excite and entertain me. Through participating in various events and activities such as the internship at Daiwa Securities SMBC in summer 2006, the "Education Without Borders" International Student Conference in the UAE in 2007, and numerous exchange programs, I have been able to envision a bright future. APU opens the door to the world, providing students with countless possibilities in life.



**Rajat
Jain**

The Doon School

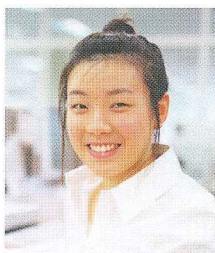
India

Working as an Information Systems Assistant (SA) at APU has been an amazing experience, and an integral part of my student life. The job provided the opportunity to help students and teachers in IT classes, make friends with people from different countries and cultures, and be a part of various IT projects, like creating websites and improving web-assisted learning at APU. As the SA leader in my final year, I learned to cope with more responsibility, and with guidance from office staff learned about various topics ranging from web development to working in Japan. This experience has immensely helped me in my job hunting in Japan and will continue to reap rewards in the future.

Unique Opportunities

Student Exchanges

APU has student exchange agreements with 77 universities and institutions in 34 countries and regions (as of April 2007). Approximately 80 domestic and international students participate in the exchange programs every year. The duration of the exchange program is one semester or one year. The primary aim of these programs is to enable participants to take courses in their area of specialization at a different university, giving them maximum opportunity to broaden their knowledge. APU also currently has short-term exchange programs that last for one quarter at three partner universities.



Hye Won Choi
Korea
Haeundae Girls' High School

I tremendously enjoyed my classes in mass media at the University of Oklahoma (OU). I was able to act as a reporter, film footage for, and edit my own news program. Similar to APU, I had many opportunities to speak English and make friends with people from other countries. Having roommates from America and Africa was a great intercultural experience. During school breaks my friends and I enjoyed interstate trips. I still keep in touch with them even after returning to Japan. I will never forget the wonderful times I had as an exchange student in Oklahoma.

Studying at Ritsumeikan University

APU students can choose to study for one or two semesters at the undergraduate colleges of Ritsumeikan University in Kyoto or Shiga Prefecture. Upon return to APU, students may receive credits for all subjects successfully completed during their exchange, so as to not delay their graduation. For a shorter program, APU recommends the RU Summer Session Exchange Program. This special program, allows APU students to take regular session subjects at Ritsumeikan University during their summer vacation. Each session lasts for one week, during which time students attend 14 intensive classes.



Elena Tanina
Bulgaria
Manhattan High School

I consider my participation in the exchange program between APU and Ritsumeikan University an amazing experience which has broadened my student life. While living in Kyoto I chose to attend classes at both campuses (Kinugasa Campus and BKC), and this experience has proven invaluable.

Through studying at a typical Japanese university and being surrounded predominantly by Japanese students, I was able to deepen my academic knowledge, and gain further insights into Japanese culture and lifestyle.

World Students' Tourism Summit

In 2005, APU hosted the World Students' Tourism Summit in collaboration with Oita Prefecture and Beppu City. The summit attracted 461 students from 37 countries and regions. The summit incorporated an exchange caravan where participants traveled to major attractions in each prefecture in Kyushu and engaged in exchange with local communities. The plenary programs, nine workshops and the affiliated events including the video competition and tour planning competition made this a truly memorable event. The Prime Minister of Japan also attended this landmark event.



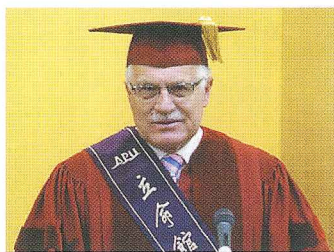
Ekaterina Porras
Mexico
Wood College in Mississippi / Nizhnyi Novgorod Pedagogical University

The International Student Conference was a four-day conference where the voices, minds and hearts of young leaders came together to discuss and work towards solutions for global issues. This year's conference entitled Education Without Borders informed, inspired and encouraged young leaders to confront poverty face to face and become active in eradicating global problems facing mankind. The conference was a wake up call for me. It challenged my mind, expanded my knowledge and has made me committed to reducing poverty and inequality in developing countries.



Symposia and Guest Speakers

Each year, APU brings some of the world's greatest minds to its campus. Speakers have included an impressive roster of national and international figures in science, politics, business, human rights, law and the arts. Each year the University also hosts a number of thought-provoking symposia. APU students are actively involved, participating in and following-up on these symposia and conferences. These events help enrich APU's academic environment and enhance its reputation as a leading Asian university. Last year APU held the Asia Pacific Maritime Symposium and Global Movements in the Asia Pacific Conference. APU also hosted a number of guests, including former heads of states and Nobel Prize winners. See page 51 for the Advisory Committee list.



President of the Czech Republic, His Excellency Vaclav Klaus, receiving an honorary doctorate.



President,
Republic of Malawi
Bakili Muluzi



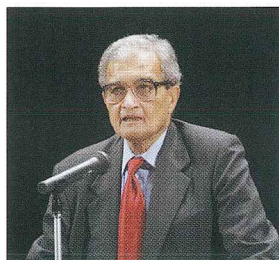
President,
Republic of Palau
Tommy E.
Remengesau Jr.



Prime Minister,
Kingdom of
Cambodia
Hun Sen



Fidel V. Ramos
Former President The
Republic of the Philippines



Amartya Sen
Lamont University Professor
Professor of Economics and Philosophy,
Harvard University
Nobel Prize Laureate in Economics (1998)

Visits by Distinguished Guests in 2006

February Kim Young-So

Consul General, Consulate General,
The Republic of Korea in Fukuoka

May Marcelo Magnou

Charges d'affaires ad interim, The Oriental
Republic of Uruguay in Japan

June Daniel Antonio

Ambassador to Japan, The Republic of Mozambique

August Roosevelt Gondwe

Ambassador to Japan, The Republic of Malawi

October Emile Rwamasirabo

Ambassador to Japan, The Republic of Rwanda

October Salah Hannachi

Ambassador to Japan, The Republic of Tunisia

November Fidel V. Ramos

Former President, The Republic of the Philippines

December Kosit Panpiemrat

Deputy Prime Minister and Minister for Industry,
The Kingdom of Thailand

December Suvidhya Simaskul

Ambassador to Japan, The Kingdom of Thailand

December Tekeda Alemu

State Minister, Ministry of Foreign Affairs,
The Federal Democratic Republic of Ethiopia

December Abdirashid Dulane

Ambassador to Japan, The Federal Democratic
Republic of Ethiopia



Yuan Tseh Lee
President Emeritus and Distinguished
Research Fellow Academia Sinica
Nobel Prize Laureate in Chemistry
(1986)

Note: Titles current at time of publication.

Education With You in Mind

1 Active Learning

Learning at APU is not limited to the campus but is done throughout the world. At APU, learning off-campus is known as 'Active Learning', and many programs have been implemented both in Japan and abroad. A variety of programs are offered which allow you to choose a program that best meets your goals, desired program duration and destination while fitting it into your 4 years of study at APU. For example, you may participate in a short-term program such as the AP Language

Immersion Program followed by an exchange program at a partner university in that country. Or you may choose to participate in theme based programs, field studies or volunteer work to acquire various skills and further develop your studies in the classroom.

See page 43 for Universities and Institutions Affiliated with the Ritsumeikan Trust.

2 Sheltered Classes

In addition to regular subjects, students may choose to take "sheltered classes" in their second year. These sheltered classes are taught using simplified language, and use various audiovisual aids, such as overhead projectors, and other methods to make learning easier for students who are taking classes in English or Japanese for the first time.



5 Accelerated Program

Although undergraduate studies in Japan normally take a total of four years, APU students can graduate in as little as three years. This program is available to those who meet specific criteria. Students can make a head start on their professional life or post-graduate studies, as well as save financially (students can save up to 1.5 million yen in tuition and other expenses). Accelerated program students are required to meet the same credit requirements as regular students by taking extra classes each semester, in addition to maintaining a high grade point average.



Eng Ngor Lee
Malaysia
Yu Hua Secondary School

The effort shown in completing a 4-year Bachelor degree program in only 3 years was highly valued by potential employers during my job-hunting process. I believe it has contributed significantly to my success in securing a good job in Japan. Without doubt, the Accelerated Program at APU is a unique and innovative education system that in recent years has attracted the attention of many companies in Japan. I hope current students in APU will strive for enrollment in such a program in order to maximize their opportunities for realizing their career ambitions in the future.

6 Multicultural, Multilingual

As society rapidly internationalizes, becoming familiar with the cultures, customs, and languages of other countries and regions is essential for people who will be leaders of the next generation. APU is committed to enrolling a student body that represents the ethnic and cultural diversity of international society. Almost all of the classes for first-and second-year students are offered in both English and Japanese. This environment allows for steady development of international communication abilities and fosters multicultural understanding.



3 Asia-Pacific Languages

APU also offers classes in Chinese, Korean, Malay/Indonesian, Spanish, Thai and Vietnamese, from the beginners level. These are the native languages of many international students at APU. Therefore, students will have many opportunities to develop their language abilities through daily conversations with other students.



Erik Pietersma
U.S.A.
Claremont High School

I decided to study Thai because I wanted to be different. Everybody else was taking popular languages like Chinese or Korean. Thai is not a difficult language, it uses a distinct alphabet, and the grammar is very simple and straightforward. It has five tones, which may seem difficult to some people, but it is much easier than you think. Thailand is one of the most popular tourist destinations in Asia, but the real Thailand beneath tourism is very different and fascinating. A typical Thai will most likely not speak your language, so learning Thai is the only way to start discovering the real Thailand.

4 Combined-Degree Program

A growing number of people are pursuing higher levels of education. In line with this trend APU intends to offer students the opportunity to complete both a bachelor's and a master's degree in just five years or a minimum of four (six for an MBA). The combined-degree programs allow students to get a head start on their graduate education by taking graduate courses throughout their junior and senior years. Those on a scholarship will continue to receive financial aid while studying for their graduate degree.

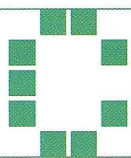
7 Quarter System

APU uses a quarter system, with each semester divided into two halves. One quarter is approximately two months in length. This system enables students to concentrate on a certain subject during a short period. It also allows APU to invite guest lecturers from industry who could otherwise not come due to time constraints. Students usually take approximately four or five subjects per quarter. However, language education classes, seminars, and other subjects requiring relatively more time, are studied over full semesters.

8 Adjunct Model

The "adjunct model" refers to the educational system that links language classes (English) with lectures offered in English. A professor gives a lecture based on the topic of a major subject. Using the lecture to study English, students prepare to take major courses in English by reading the lecture materials, holding discussions and writing. In order to ensure the smooth transition to the major subjects, class content varies with the college.





College of Asia Pacific Studies

4 Specialized Clusters

- Comparative Societies and Cultures
- International Governance
- Environmental Resource Policy
- Sustainable Development Studies

Comparative Societies and Cultures

Students delve into the society, culture and values of the Asia Pacific region to understand the present day problems it faces. A comprehensive and interdisciplinary academic approach is adopted, with students studying international issues from the perspective of sociology and cultural anthropology. Topics include the comparative study of urban cultures and issues involving development and cultural transformation.

International Governance

Globalization presents challenges that demand a new perspective on governance. An increasingly global economy is introducing greater disparity in the development of nations, exerting pressure on public policies and social goals. At the same time, critical policy problems—such as environmental degradation and financial market instability—increasingly require strategies of global governance that coordinate across nations, governments, businesses, and non-governmental agencies. Students are taught how to develop these strategies and what issues must be considered in the course of their implementation.

Environmental Resource Policy

Students will gain a deep awareness of the causes and effects of environmental problems and resource-related issues now confronting the Asia Pacific region. They will also learn about the policies and measures being adopted to combat these problems in various countries. Through comprehensive study, students acquire the expertise to produce workable policies.

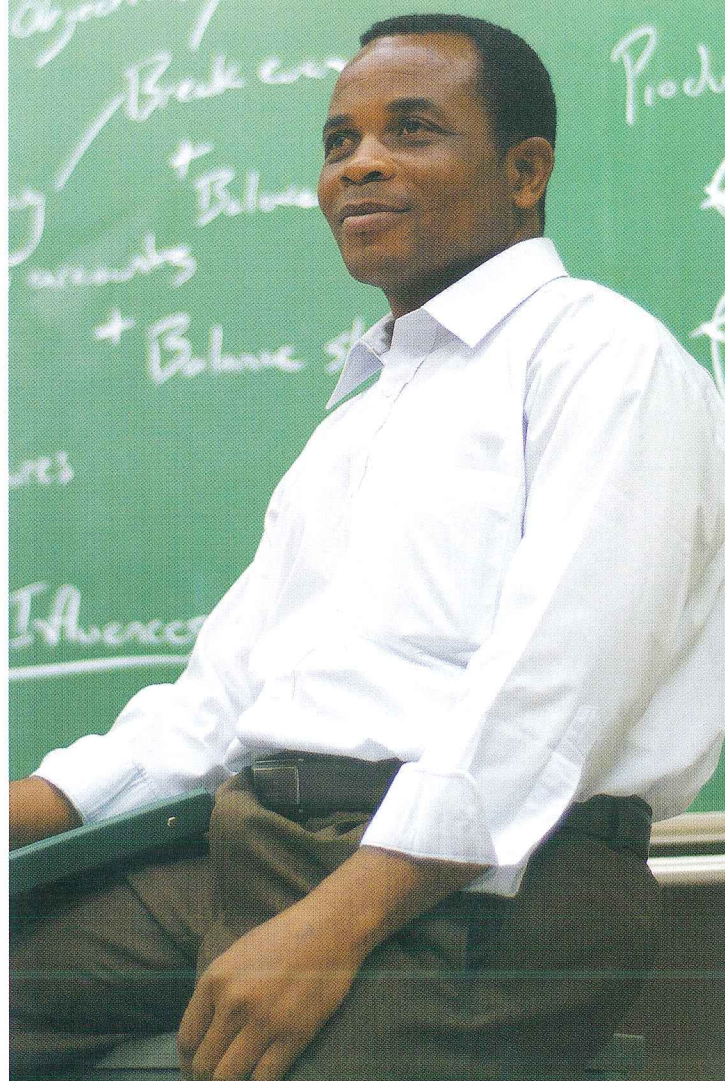
Sustainable Development Studies

This cluster tackles the question of sustainable development in relation to efforts to balance ecological sustainability and economic development. Students consider the policies and strategies of nations and regions in bringing sustainable development into harmony with economic growth.

Sample Seminar Topics:

- The Asia Pacific and Europe in the Modern World
- City Growth and Urban Issues in the Asia Pacific
- Globalization, Governance, Environment and Natural Resources Management
- Manga based on Social and Environmental Problems
- Japanese Landscapes
- Communities, Organizations and Socio-cultural Change in the Asia Pacific

The Asia Pacific region continues to attract attention for its ongoing rapid economic growth. There are, however, numerous negative issues, such as poverty, starvation and disease. APS approaches these problems with an emphasis on learning through experience, which includes fieldwork to fully understand the issues. Students are taught to be pro-active when solving problems, considering issues from the perspective of regions, enterprises, governmental bodies, and individuals. The 4 areas of study offered in the College of Asia Pacific Studies, Comparative Societies and Cultures, Environmental Resource Policy, International Governance and Sustainable Development Studies have been designed to meet the needs of individuals who are aiming to be active on a global level.





**Professor
Susumu
Yamagami**
Dean, College of
Asia Pacific Studies

The Asia Pacific region's continuing growth in the 21st Century is the combined result of rapid technological developments, socioeconomic advances and globalization. It is important that the region finds a way to sustain its development during this century and discovers how to address the various issues that will arise during the process.

The College of Asia Pacific Studies aims to train and educate competent leaders capable of understanding and

tackling the problems brought on by change. Through examining current research relating to the Asia Pacific, the program encourages students to analyze real-world situations facing the region today. It also aims to establish a fresh direction for education and research—a new approach to Asia Pacific studies intent on finding practical solutions for the region and how they should be implemented. Students are able to choose from four different areas of specialization to meet their particular needs.



**Sizhen
Jia**
China
Zhejiang Xiaoshan
High School

I had always wanted to work for a government organization. In order to arm myself with the social science knowledge necessary to achieve this goal, I enrolled in the College of APS. I have now been studying in APS for one year majoring in International Governance, focusing on the theme of Human Rights in the Asia Pacific. APU's appeal goes beyond just course content. The multicultural environment here greatly helps students prepare to enter the globalizing world. The dual language education system is a core ingredient of APU. Without it, we would have very little chance to communicate with people from different countries. Furthermore, the priority system for course registration at APU is great, as it encourages students to work harder. APU is an excellent choice for those who are aspiring for a bright future on the international stage.



**Thu Ngan
Vu**
Vietnam
Hanoi - Amsterdam
High School

Attending an informal meeting with Japanese Prime Minister, Mr. Shinzo Abe was an unforgettable memory for me. The purpose of this meeting was to offer information to the Prime Minister prior to his official visit to Vietnam. We had the opportunity to introduce aspects of the Vietnamese economy, culture, and lifestyle to the visiting members of the Diet. In addition to talking about our studies at APU and lives in Japan, we expressed our deep appreciation to the Japanese government for its support towards Vietnamese students. I am happy to learn that the visit was successful, and would like to express my wish for the continued development of friendly relations between the two nations.

1st Year

During this stage, students acquire high-level working knowledge of a language, which is essential for understanding classes at APU. They also learn about the diversity of the Asia Pacific region, and obtain a wide variety of knowledge that will help them conduct field research related to this region through a wide range of foundation subjects (see below).

Language Subjects	<ul style="list-style-type: none"> ●Introduction to English ●Fundamental English I, II ●Intermediate English I, II ●Japanese Foundation Course I, II, III ●Japanese Intermediate Course ●Japanese for Science & Technology I, II, III, IV ●Chinese I ●Korean I ●Malay/Indonesian I ●Spanish I ●Thai I ●Vietnamese I
Major Subjects	
Comparative Societies and Cultures	
International Governance	<p>Foundation Subjects</p> <p>1st Year Subjects</p> <ul style="list-style-type: none"> ●First-Year Student Workshop I, II ●Psychology ●Ethics and Contemporary Society ●Special Lecture (Foundation Education Subject) ●Contemporary Business in the Asia Pacific ●Introduction to History ●Introduction to Intercultural Communication ●Traditions and Societies of the Asia Pacific ●Peoples and Religions of the Asia Pacific ●Japanese Culture ●Japanese History ●Contemporary Japanese Society ●Introduction to Economics ●Statistics ●Mathematics for Social Sciences ●Contemporary Japanese Economics ●Society and Law ●Introduction to Political Science ●Introduction to International Relations ●The Asia Pacific and Human Rights ●Environment and Chemistry ●Health Science ●Bioscience ●Earth Sciences ●Introduction to Environmental Studies ●Mathematics I, II, III ●Mathematics for Information Technology ●Physics I, II ●Contemporary Science and Technology ●Foundation in Information Technology ●Introduction to Programming ●Internet Fundamentals ●Languages and Cultures of the Asia Pacific ●Geography of the Asia Pacific <p>2nd Year Subjects</p> <ul style="list-style-type: none"> ●Occupational Awareness and Career Development ●Projects in Multicultural Studies <p>3rd Year Subjects</p> <ul style="list-style-type: none"> ●Overview of Business Sectors in Japan
Environmental Resource Policy	
Sustainable Development Studies	
	<ul style="list-style-type: none"> • Social Theory • Societies in East Asia • Societies in South Asia
Seminar and Active Learning	

Subject Grade System

All courses are listed on a scale of 100 to 400, which shows the level of comparative difficulty of each subject. This system allows students to study systematically by organizing subjects sequentially from basic courses to more specialized courses. In addition, the system aids students in acquiring knowledge from a broad range of fields, giving them more freedom to arrange a curriculum that suits their objectives.



2nd Year

In this stage, students take higher-level language courses to further improve their language ability, and begin the main specialized subjects related to sociology and international sociology. Students also have the option to participate in study abroad programs that provide short or long-term study at overseas universities and institutions. APU offers the option to study at Ritsumeikan University as well.

3rd Year

Major subjects taken during the 3rd year are those related to societies of the Asia Pacific region (Comparative Societies and Cultures, International Governance, Environmental Resource Policy, Sustainable Development Studies). Students participate in fieldwork in Japan and abroad, or take up an internship to gain practical work experience at companies or local governing bodies.

4th Year

In the 4th year, students are required to take subjects related to their own specialized area. Combining specialized knowledge on the Asia Pacific region, students further develop their studies as a compilation of their campus life.

- Advanced English I, II ●Japanese Advanced Course I, II ●Chinese II, III ●Korean II, III
- Malay/Indonesian II, III ●Spanish II, III
- Thai II, III ●Vietnamese II, III

- Business Japanese I, II ●Applied Japanese
- Japanese Linguistics ●Teaching Japanese as a Second Language ●Chinese IV ●Korean IV
- Malay/Indonesian IV ●Spanish IV ●Thai IV
- Vietnamese IV

- Development Sociology
- Cultural Anthropology
- Politics and Economics in the Asia Pacific
- Gender Studies • Transnational Sociology
- Multiculturalism and Society
- Cultural Sociology • Comparative Social History
- Research Methods for Social Sciences
- Social Psychology

- Ethnicity and Nationalism
- Comparative Analysis of Western and Asia Pacific Societies
- Education and Society
- NGOs and NPOs and Citizen Networking
- International Politics and Economy
- Migration Studies

- Politics and Economics in the Asia Pacific
- International Law
- Globalization and Law
- Regional Systems of the Asia Pacific
- Asia Pacific Governance
- International Politics
- History of International Politics
- Project Management and Evaluation
- Social Life and Development
- International Peace Studies
- International Cooperation

- International Organizations
- Ethnicity and Nationalism
- Sociology of Organizations
- Development Policy
- International Politics and Economy
- Migration Studies
- Strategic Planning & Decision Making

- Environmental Studies in the Asia Pacific
- Urban and Rural Studies in the Asia Pacific
- Environment and Society
- Energy and Resources

- Development Economics
- Urban Environment • Environmental Policy
- Environmental Economics
- Geoinformatics • International Economics
- International Law of the Sea
- Environmental Resource Management

- Environmental Law and Administration

- Development Sociology
- International Politics
- Project Management and Evaluation
- Social Life and Development
- International Cooperation

- Development Economics
- Environmental Policy • Environmental Economics
- NGOs and NPOs and Citizen Networking
- Geoinformatics • International Economics
- Development Policy
- Community Development

- Environmental Law and Administration

- Special Lecture (Asia Pacific Studies)
- Special Lecture (Area Studies)

- Communication and Mass Media Studies
- Information Technology and Society

- Media Studies
- Advanced Reading I
- Advanced Reading II

- Introduction to Research Methods
- Field Study

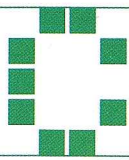
- Major Seminar I • Major Seminar II
- Internship • Applied Training
- Volunteer Activities

- Research Seminar
- Undergraduate Thesis

Minimum of 62 credits required

For the latest information, please see the university homepage.

※Both Language Education and Foundation Education subjects are required under the APS curriculum.



4 Areas of Specialization

- Marketing and Corporate Strategy
- Accounting and Finance
- International Business and Comparative Management
- New Business and Innovation

Marketing and Corporate Strategy

This area is designed to provide students with a concept of competition and an understanding of the role of managers in the process of strategy formulation, implementation and evaluation. Instruction involves conducting surveys and analysis of market needs, as well as studies of the processes that lead to product development to meet such needs. Raising students' level of strategic thinking is another important aim of instruction in this area.

Accounting and Finance

In this course, students learn the rules for the preparation of financial statements, enabling them to systematically develop the accounting expertise needed for corporate decision-making. Students also learn how to prepare financial information for investors. Emphasis on the study of these concepts will lead to a thorough understanding of money flow, an awareness which is essential for corporate management and the overall development of business assessment skills.

International Business and Comparative Management

Course subjects help participants understand global and local business operations in the Asia Pacific region. With economic globalization, corporations are shifting to trade between countries, regardless of the scale of operations. Therefore, an understanding of differences in labor markets, personnel systems, and management methods between countries is vital for the development of effective corporate strategies.

New Business and Innovation

Innovative ideas move us forward. They provide new products and create new business. The innovative nature of the Internet, mobile technologies, multimedia and e-business are changing the way organizations compete, cooperate and deliver services across all private and public sectors. Students will study the leading theories and practices required for managing this increasing complexity, driven by innovations in technology.

Sample Seminar Topics:

- Leading Asia Companies and Entrepreneurs
- Strategic Human Resources Management
- Applications of Microeconomic Theory to Management Issues
- Knowledge Creation in Corporate Management
- Game Theory and Related Topics
- Business Analysis
- Management of Technology for the Asia Pacific
- International Joint Ventures

The College of Asia Pacific Management aims to cultivate a global perspective and the necessary problem-solving skills for graduates to take business in the Asia Pacific region to new levels. Students learn the concepts of corporate management through core subjects, and more specialized information in the following fields: Marketing and Corporate Strategy, Accounting and Finance, International Business and Comparative Management and New Business and Innovation. Core subjects are designed to give an understanding of leading corporate management trends that can be applied in the Asia Pacific region. The college also offers internships to allow students invaluable industry exposure and to discover what brings job satisfaction and what does not.

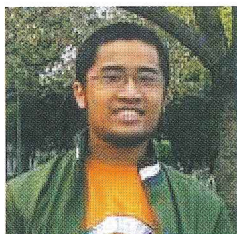




**Professor
Masanori
Namba**
Dean, College of
Asia Pacific Management

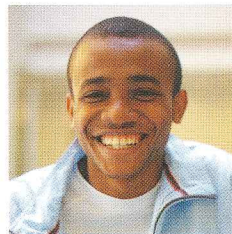
I encourage students to come and learn about Japanese culture, its unique innovative business techniques and how Japan has managed to rebound from its "lost decade". Through exploring a culture sheltered from the world for centuries, students will learn to recognize the best aspects of their own. The core field of study offered by the College of Asia Pacific Management is international management. Advancements in corporate activities in the 20th century have greatly enhanced corporate management

practices in recent years. Moreover, economic globalization and technological innovation, particularly in the IT sector, are giving rise to fundamental changes in the nature of corporate management. The study of international management involves perceiving and developing solutions to such change. Once students grasp the basics of international management theory, students go on to learn about management in more detail.



**Ananda
Setiyo Ivannanto**
Indonesia
Government Middle
High School 8

Studying in the College of Asia Pacific Management at APU has provided me with a wide range of knowledge in the field of international business. APU, with its multicultural environment and dual language education system has allowed me to have a unique educational experience. The cultural harmony that exists on campus helps to facilitate rich discussions both inside and outside of class. I have also had opportunities to meet with influential individuals, from heads of states to world famous academic scholars. To me, APU is a prototype of an ideal society in the future. I recommend it to anyone considering pursuing a business career in our globalizing world.



**Samuel
Lawrence**
Nigeria
Lagos State
Model College

I chose to undertake my major in business administration for the simple fact that sound administration is necessary for any organization to exist. Without administration in some form, everything becomes disorganized. It is also essential in starting up new enterprises or creating alliances with other companies.

After graduating, I have big plans on how to apply my knowledge in business administration. My hometown is Lagos in Nigeria. At present there are no direct flights from there to Japan. My dream is to establish an airline, and through alliances with Japanese carriers, start up new direct flight routes. Even though it will take a lot of time and effort to start this plan, I believe that it is possible and lucrative. After achieving this initial goal, I hope to continue starting up new flight routes to other parts of the world.

APM Curriculum

1st Year

During this stage, students acquire high-level working knowledge of a language, which is essential for understanding classes at APU. They also learn about the diversity of the Asia Pacific region, and obtain a wide variety of knowledge that will help them conduct field research related to this region through a wide range of foundation subjects (see below).

Language Subjects	<ul style="list-style-type: none"> ●Introduction to English ●Fundamental English I, II ●Intermediate English I, II ●Japanese Foundation Course I, II, III ●Japanese Intermediate Course ●Japanese for Science & Technology I, II, III, IV ●Chinese I ●Korean I ●Malay/Indonesian I ●Spanish I ●Thai I ●Vietnamese I
Major Subjects	<ul style="list-style-type: none"> • Business Management • Accounting I • Accounting II
Core Subjects	
Marketing and Corporate Strategy	<p>Foundation Subjects</p> <p>1st Year Subjects</p> <ul style="list-style-type: none"> ●First-Year Student Workshop I, II ●Psychology ●Ethics and Contemporary Society ●Special Lecture (Foundation Education Subject) ●Contemporary Business in the Asia Pacific ●Introduction to History ●Introduction to Intercultural Communication ●Traditions and Societies of the Asia Pacific ●Peoples and Religions of the Asia Pacific ●Japanese Culture ●Japanese History ●Contemporary Japanese Society ●Introduction to Economics ●Statistics ●Mathematics for Social Sciences ●Contemporary Japanese Economics ●Society and Law ●Introduction to Political Science ●Introduction to International Relations ●The Asia Pacific and Human Rights ●Environment and Chemistry ●Health Science ●Bioscience ●Earth Sciences ●Introduction to Environmental Studies ●Mathematics I, II, III ●Mathematics for Information Technology ●Physics I, II ●Contemporary Science and Technology ●Foundation in Information Technology ●Introduction to Programming ●Internet Fundamentals ●Languages and Cultures of the Asia Pacific ●Geography of the Asia Pacific <p>2nd Year Subjects</p> <ul style="list-style-type: none"> ●Occupational Awareness and Career Development ●Projects in Multicultural Studies <p>3rd Year Subjects</p> <ul style="list-style-type: none"> ●Overview of Business Sectors in Japan
Accounting and Finance	
International Business and Comparative Management	
New Business and Innovation	
Seminar and Active Learning	

Subject Grade System

All courses are listed on a scale of 100 to 400, which shows the level of comparative difficulty of each subject. This system allows students to study systematically by organizing subjects sequentially from basic courses to more specialized courses. In addition, the system aids students in acquiring knowledge from a broad range of fields, giving them more freedom to arrange a curriculum that suits their objectives.



2nd Year

In this stage, students take higher-level language courses to further improve their language ability, and begin the main core specialized subjects related to management and accounting. Students also have the option to participate in study abroad programs that provide short or long-term study at overseas universities and institutions. APU offers the option to study at Ritsumeikan University as well.

3rd Year

Major subjects that students take during the 3rd year are those related to business and management in the Asia Pacific region. Students select a major subject (Marketing and Corporate Strategy, Accounting and Finance, International Business and Comparative Management or New Business and Innovation) and develop specialized knowledge in the subject area.

4th Year

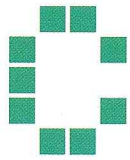
In the 4th year, students are required to take subjects related to their own specialized area. Combining specialized knowledge on Asia Pacific management, students further develop their studies as a compilation of their campus life.

<ul style="list-style-type: none"> ●Advanced English I, II ●Japanese Advanced Course I, II ●Chinese II, III ●Korean II, III ●Malay/Indonesian II, III ●Spanish II, III ●Thai II, III ●Vietnamese II, III 	<ul style="list-style-type: none"> ●Business Japanese I, II ●Applied Japanese ●Japanese Linguistics ●Teaching Japanese as a Second Language ●Chinese IV ●Korean IV ●Malay/Indonesian IV ●Spanish IV ●Thai IV ●Vietnamese IV 	
<ul style="list-style-type: none"> • Finance • Production Management • Marketing • Human Resources Management 		
<ul style="list-style-type: none"> • Microeconomics • Cost Accounting • Logistics • History of Management • International Trade • Introduction to Business Law • Entrepreneurship 	<ul style="list-style-type: none"> • Management Accounting • History of Economic Development and Management in Japan • History of Economic Development and Management in Asia • Corporate Governance and Organizational Behavior • Business Ethics and Corporate Social Responsibility • International Marketing • Legal Strategy in Business • Supply Chain Management • E-Business • Marketing Research • Consumer Behavior • International Transactions 	<ul style="list-style-type: none"> • International Management • Corporate Strategy • Product Development Strategy • Sales and Promotion Management • Hospitality Business Strategy
<ul style="list-style-type: none"> • Microeconomics • Cost Accounting • Macro Economics • Management Information System • Commercial Law I • Commercial Law II • Civil Code I • Civil Code II 	<ul style="list-style-type: none"> • Management Accounting • Corporate Finance • Financial Markets and Institutions • Financial Accounting I • Financial Accounting II • International Finance • Financial Markets in Asia • Advanced Macroeconomics • Advanced Microeconomics 	<ul style="list-style-type: none"> • Investment and Security Analysis • Advanced Accounting • Auditing • International Accounting • Investment Strategies in Asia • Tax Accounting
<ul style="list-style-type: none"> • Microeconomics • Logistics • History of Management • International Trade • Introduction to Business Law • Japanese Corporations in the Asia Pacific 	<ul style="list-style-type: none"> • Management Accounting • History of Economic Development and Management in Japan • History of Economic Development and Management in Asia • Corporate Governance and Organizational Behavior • Business Ethics and Corporate Social Responsibility • Global Human Resources Management • Development Economics • Business Law in Asia • International Economics • Japanese Production System • Human Resource Development in the Asia Pacific • International Comparative Management • Economies in the Asia Pacific 	<ul style="list-style-type: none"> • International Management • Management Studies in the Asia Pacific
<ul style="list-style-type: none"> • Microeconomics • Logistics • History of Management • Entrepreneurship • Management Information Systems • Commercial Law I • Commercial Law II 	<ul style="list-style-type: none"> • Management Accounting • History of Economic Development and Management in Japan • History of Economic Development and Management in Asia • International Marketing • Legal Strategy in Business • Supply Chain Management • E-Business • Corporate Finance • Global Human Resources Management • Technology Management • Technological Development and Production Systems • Operations Research • Business Plans 	<ul style="list-style-type: none"> • Corporate Strategy • Product Development Strategy
<ul style="list-style-type: none"> • Introduction to Business Studies • Field Study 	<ul style="list-style-type: none"> • Major Seminar I • Major Seminar II • Internship • Applied Training • Volunteer Activities 	<ul style="list-style-type: none"> • Research Seminar • Undergraduate Thesis

Minimum of 62 credits required

For the latest information, please see the university homepage.

※Both Language Education and Foundation Education subjects are required under the APM curriculum.



rossover Advanced Program

CAP students will enroll in either one of the existing colleges (APS or APM) and register for one of the 5 specialized CAP areas described below. In their first and second years, students take regular language and foundation subjects focusing on their area of specialization. From the 3rd year, students take major subjects offered by the college in which they are enrolled, specialized CAP subjects, and also participate in Active Learning programs. CAP programs are offered through the five APU Institutes listed below.

5 Institutes / Specialized Programs

- Tourism and Hospitality
- Health, Environment and Life Sciences
- International Strategic Studies
- Information and Communications Technology (ICT)
- Language and Culture

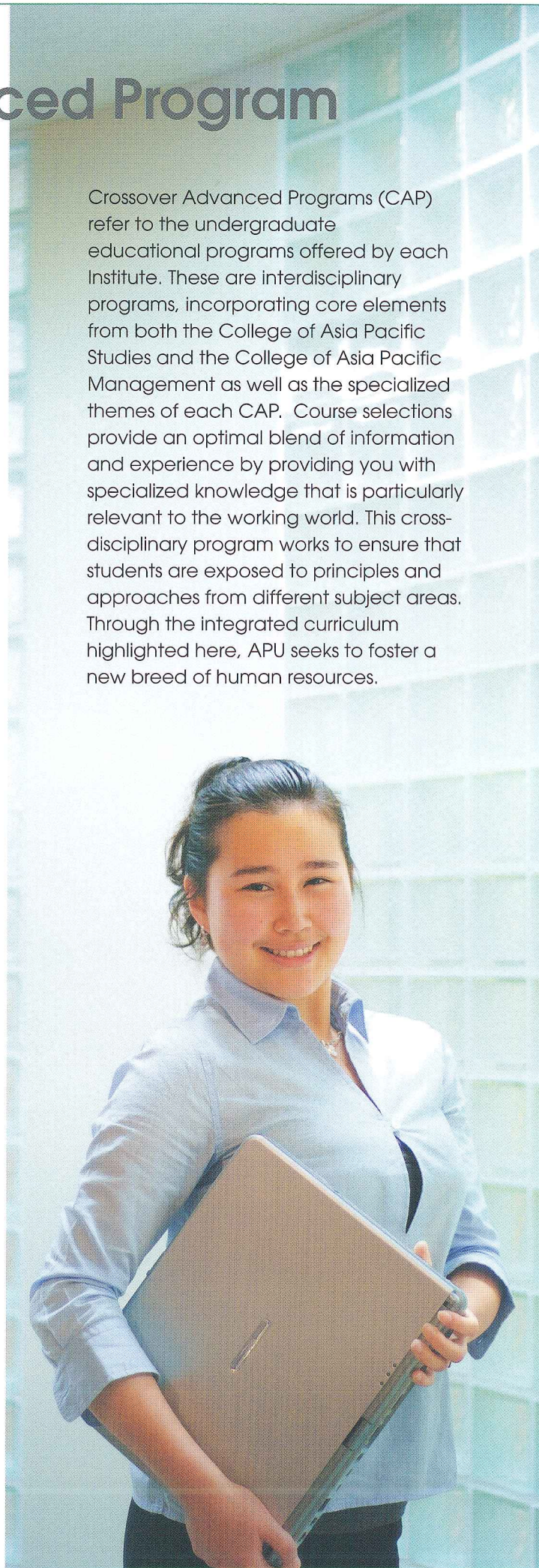


Professor
Nader
Ghotbi

Health, Environment & Life Sciences

Understanding our surrounding environment and contributing to its improved management at a regional, national and global scale is one of the key objectives of this course. There has been an increasing demand for individuals who can plan and help implement programs to secure and sustain natural and human ecosystems. With a focus on natural (habitat and disaster), industrial (resource and industrial process) and human (health, lifestyle and settlement) ecology, this program educates and trains individuals who can contribute to the improved management of the global environment, and also address health concerns and issues the Asia Pacific region is now facing. Graduates of this institute can expect to play important roles within the local and the national government, manufacturing companies and the service sector, as well as international NGOs. Graduates will find career opportunities working in the environmental area of industry or government. By making use of networks within the industry, these individuals will participate in new business ventures that will reinvent the field of environmental studies.

Crossover Advanced Programs (CAP) refer to the undergraduate educational programs offered by each Institute. These are interdisciplinary programs, incorporating core elements from both the College of Asia Pacific Studies and the College of Asia Pacific Management as well as the specialized themes of each CAP. Course selections provide an optimal blend of information and experience by providing you with specialized knowledge that is particularly relevant to the working world. This cross-disciplinary program works to ensure that students are exposed to principles and approaches from different subject areas. Through the integrated curriculum highlighted here, APU seeks to foster a new breed of human resources.





Professor
Hisayasu
Ito

Language and Culture Studies

The Institute for Language and Culture exists for those students who hold a strong interest in the Asia Pacific region, and who want to gain specific knowledge about the languages and cultures of the region. This program focuses on students who will become specialists in all three areas: 1) English or Japanese language, 2) one language of the Asia Pacific region, and 3) intensive cultural studies. In this Institute, students will be able to pursue interests in careers as diverse as international business and international media. Upon graduation, students will be equipped with knowledge of various Asia Pacific cultures associated with the language studies, allowing them to contribute actively to the creation of a new Asia Pacific region.



Professor
Yukiko
Takashiba

International Strategic Studies

The world is at your reach in your lifetime, if you have the right expertise and international network of colleagues. With this in mind, the ISS helps students develop their fields of expertise in international relations. Its primary goal is to create a bridge for students to join the “global community of experts” tackling contemporary challenges. Programs and activities offered at the ISS therefore emphasize critical thinking and policy-oriented approach. The ISS students are strongly encouraged to choose core disciplines they can build upon from an early stage. Moreover, in the context of globalization, pressing transnational issues and challenges to pre-existing rules of our time require international partnerships; the ISS is equally committed to fostering the ability of the students to work in collaboration with international partners.



Professor
Susumu
Yamamoto

Information and Communications Technology (ICT)

The ICT industry is one of the youngest and most dynamic industries that exists today. The Asia Pacific region requires talented individuals with the technical knowledge, and practical skills necessary to develop, administer and manage information systems. This course responds to such needs by letting students develop real-life ICT systems. The ICT course consists of an ideal combination of ICT related subjects and a wide range of social science subjects. Students will acquire cutting-edge technological knowledge as well as linguistic, social, cultural and management knowledge. APU is ideally located in Oita prefecture with its many semiconductor companies to foster graduates able to forge new business models in a highly competitive industry.



Professor
Hiroshi
Todoroki

Tourism and Hospitality

Drawing from tourism studies in APS, this program will promote research of the tourism industry as well as cultural and environmental heritage preservation in the Asia Pacific. This course provides a robust curriculum for both students who are focusing on research and students who are focusing on a career in tourism-related industries. Our aim is to respond to the growing need for reliable and accurate research in tourism, which is the Asia Pacific's largest industry, while broadening students' understanding of the role hospitality plays in various sectors.

1st Year

To make the best of the bilingual atmosphere at APU, students begin their studies with language subjects. Other foundation subjects offer a broad introduction into the current issues of the Asia Pacific.

Language Subjects	<ul style="list-style-type: none"> ●Introduction to English ●Fundamental English I, II ●Intermediate English I, II ●Japanese Foundation Course I, II, III ●Japanese Intermediate Course ●Japanese for Science & Technology I, II, III, IV ●Chinese I ●Korean I ●Malay/Indonesian I ●Spanish I ●Thai I ●Vietnamese I
Major Subjects	
Tourism and Hospitality	Foundation Subjects 1st Year Subjects <ul style="list-style-type: none"> ●First-Year Student Workshop I, II ●Psychology ●Ethics and Contemporary Society ●Special Lecture (Foundation Education Subject) ●Contemporary Business in the Asia Pacific ●Introduction to History ●Introduction to Intercultural Communication ●Traditions and Societies of the Asia Pacific ●Peoples and Religions of the Asia Pacific ●Japanese Culture ●Japanese History ●Contemporary Japanese Society ●Introduction to Economics ●Statistics ●Mathematics for Social Sciences ●Contemporary Japanese Economics ●Society and Law ●Introduction to Political Science ●Introduction to International Relations ●The Asia Pacific and Human Rights ●Environment and Chemistry ●Health Science ●Bioscience ●Earth Sciences ●Introduction to Environmental Studies ●Mathematics I, II, III ●Mathematics for Information Technology ●Physics I, II ●Contemporary Science and Technology ●Foundation in Information Technology ●Introduction to Programming ●Internet Fundamentals ●Languages and Cultures of the Asia Pacific ●Geography of the Asia Pacific 1st Year Seminars APU has established the following two seminars for 1st year students to gain the fundamental study skills needed at the university level. <ul style="list-style-type: none"> ●1st-year Student Workshop I Students learn fundamental skills such as how to use the library, how to collect information, how to write academic papers etc. <ul style="list-style-type: none"> ●1st-year Student Workshop II Domestic and international students join forces to work on team projects, deepening their understanding of each other's cultures and regions.
Health, Environment and Life Sciences	
International Strategic Studies	
Information and Communications Technology	2nd Year Subjects <ul style="list-style-type: none"> ●Occupational Awareness and Career Development ●Projects in Multicultural Studies 2nd Year Seminars The following seminars give students the basics skills needed for learning their major area. <ul style="list-style-type: none"> ●Introduction to Research Methods (APS) Students learn the fundamental research and survey techniques needed for studying in APS. <ul style="list-style-type: none"> ●Introduction to Business Studies (APM) Students deepen their understanding of the business world through research on corporations.
Language and Culture	3rd Year Subjects <ul style="list-style-type: none"> ●Overview of Business Sectors in Japan
Seminar and Active Learning	



2nd Year

3rd Year

4th Year

Major Subjects (APS or APM)

By systematically studying the major subjects in their College (APS or APM), students gain the specialized knowledge and critical thinking skills needed to discern and solve the issues they face.

CAP Major Subjects

CAP students begin studying CAP subjects from their 2nd year. Through systematic study, students learn to tackle the issues of the contemporary Asia Pacific from all angles as they seek out multiple solutions.

●Advanced English I, II ●Japanese Advanced Course I, II ●Chinese II, III ●Korean II, III
●Malay/Indonesian II, III ●Spanish II, III
●Thai II, III ●Vietnamese II, III

●Business Japanese I, II ●Applied Japanese
●Japanese Linguistics ●Teaching Japanese as a Second Language ●Chinese IV ●Korean IV
●Malay/Indonesian IV ●Spanish IV ●Thai IV
●Vietnamese IV

• Asia Pacific Tourism
• Tourism Policy
• Tourism Resources Management
• Travel and Hospitality Management
• Special Lecture (Tourism and Hospitality)

• Eco-Tourism
• Cultural Heritage Management
• Risk Management and Service Delivery
• Hospitality Marketing

• Tourism Development and Planning
• Legal Framework of Tourism

30 credits or more

• Introduction to Global Environmental Issues
• Natural Ecology • Industrial Ecology
• Human Ecology
• Special Lecture (Health, Environment and Life Sciences)

• Environmental Analysis and Modelling Techniques
• Genetics and Cell Biology
• Ageing, Disability and Health Management
• Pollution Control and Waste Management

• Environmental Governance, Policy and Law
• Ecological Security
• Human Security

30 credits or more

• International Peace Studies
• Introduction to International Strategy
• International Cooperation
• Globalization and Regionalism
• Special Lecture (International Strategy)

• International Politics and Economy
• Migration Studies
• Strategic Planning & Decision Making
• International Strategy in the Asia Pacific
• Political Geography

• Human Security

30 credits or more

• Law, the Internet and Society
• Systems and Application Programming
• Database Management Systems
• Design Usability • Internet Technology Integration
• Multimedia Design Technologies
• Special Lecture (Information Communication Technology)

• Computer Assisted Design and Manufacturing Technologies
• Sequential and Electrical Circuits
• Software Engineering
• Security Information Systems Management
• Knowledge Management and Data Mining
• Design in the Digital Age
• Information Systems Architecture and Networks

• Embedded Programming

30 credits or more

• Introduction to Language and Culture Studies
• Asia Pacific Languages I
• Asia Pacific Languages II
• Business Communication
• Contemporary English Studies
• TESOL I
• Special Lecture (Language and Culture)

• TESOL II
• Business Negotiation
• Cultural Literacy and Interpreting I
• Language and Culture Studies

• Cultural Literacy and Interpreting II
• Cultural Exchange Studies

30 credits or more

• Introduction to CAP Major Seminar

• CAP Major Seminar I
• CAP Major Seminar II
• Field Study (CAP)

• CAP Research Seminar
• Undergraduate Thesis (CAP)

For the latest information, please see the university homepage.

※Both Language Education and Foundation Education subjects are required under the CAP curriculum.



APS Seminars

The APS seminars serves to develop student's understanding of specific social issues affecting the Asia Pacific Region through research and discussion.

Students write academic reports on a chosen topic. Topics may include social issues, history, cultural problems, urban issues, environment, tourism, and information in the Asia Pacific region.

During their studies, some students take part in surveys, interviews or fieldwork in Japan or overseas. The seminar described on the next page is an example of this mode of study.

Seminars



APM Seminars

In APM seminars, students study actual cases to learn about corporate behavior and the business environment.

Discussions during class center on business strategy, corporate finance, corporate accounting, distribution, marketing, HR management, and economic policies. Students research topics designated by the lecturer and later develop their own research themes. The seminar described on the next page is an example of this mode of study.



Professor
Robert
Salazar

My seminar is entitled Communities, Organizations, and Socio-cultural Change in the Asia Pacific. It deals with communities and organizations in the Asia Pacific region and how they are affected by, contribute to, and manage or cope with socio-cultural change. The topic covers a wide range of issues, such as change processes seen in various fields such as the environment, tourism, information technology, health, and the like. The seminar discusses cases and perspectives from the social sciences and from the fields of management and organizational studies.

Inasmuch as the seminars are designed to prepare students for their undergraduate thesis, my seminar topic is intentionally broad to accommodate the varied interests of students. Thus

far, students have focused on issues such as the effects of employment on people with disabilities, computer-mediated communication and interpersonal relationships, stakeholder concerns in the preservation of Kyoto's Kyomachiya, and tourism-related motivations and concerns among the elderly in Thailand and Japan, to name a few.

In class we discuss journal articles dealing with different issues related to the seminar topic. By studying journal articles, students learn not only about socio-cultural change, but also about the research process and scientific writing. I guide them by pointing out theoretical and methodological issues, as well as concerns relating to writing styles and mechanics.

Seminars are offered from the 3rd year of study and allow students the opportunity to work closely with a lecturer in a specific area of the lecturer's expertise. Students interested in advancing to graduate study or finding employment in Japan are strongly encouraged to begin their intensive specialized study with a third-year seminar. Each seminar requires students to bring together interests and skills developed in previous courses and make in-depth oral and written presentations.



Professor
Kenji
Yokoyama

This is a 'nuts and bolts' course in international finance transactions. The seminar looks at the transactions that are conducted within financial markets, the potential problems that arise with them and how those risks can be managed. This seminar is directed towards students seeking to practice in capital markets,

bankers in commercial and investment banks and accountants within major firms. Participants obtain knowledge of the key terms and documentation used in transactions along with learning about external sources of funds and the contributions that they can make to the structuring and negotiating of these financial transactions.



Faisal
Shahid
Pakistan
Govt. Degree College

I really enjoy the seminar atmosphere. Through our presentations we're learning a lot from each other - it's not just about reading information in books. The lecturer has a background in international trade, so he has that deep knowledge that comes from practical experience. This seminar is giving me a much broader knowledge

to call on and I feel that it will assist my career in the near future.

oint Program in Science and Engineering

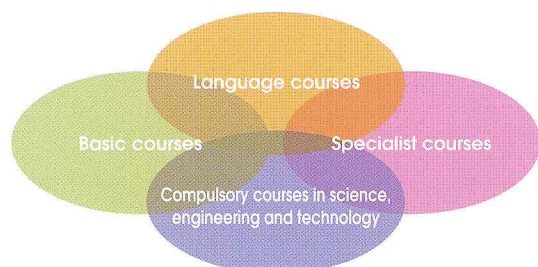
Japan's economic strength is underpinned by a worldwide reputation for scientific innovation and cutting-edge technology. Now, Ritsumeikan provides the opportunity for international students to learn from Japan's success and join other scientists and engineers at the front lines of global change. The Joint Program in Science and Engineering begins in the international environment of APU where students can acquire advanced Japanese language ability, a solid grounding in math and physics, and the liberal arts education necessary to understand Japan and its place in the world. From there, students transfer to Ritsumeikan University to undertake further specialized study and explore new frontiers of science and technology.



1 to 1.5 years

Ritsumeikan Asia Pacific University

Number of Students: 20-40



Earn credits for transfer to
Ritsumeikan University:

Up to **42** credits at APU will be approved
for students transferring to the
College of Science and Engineering.

Up to **34** credits will be approved for
students transferring to
**College of Information Science and
Engineering.**

Japanese
Language
Proficiency
Test Test 1

Mastery of
basic knowledge
of science and
engineering

STEP 1



Intensive study of Japanese and fundamentals of specialist field

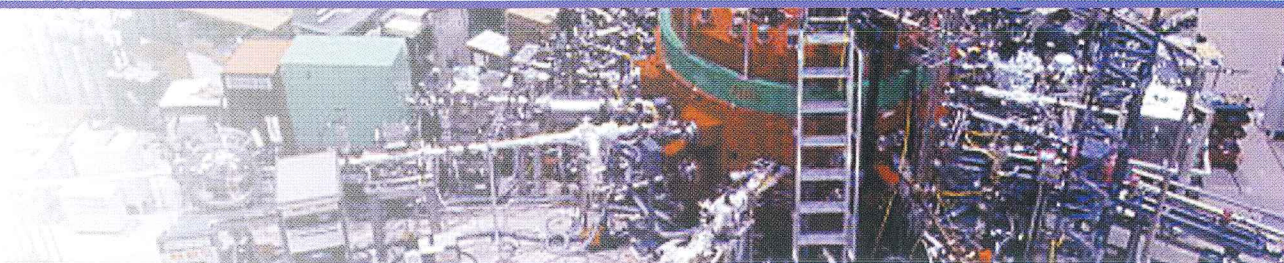
At Ritsumeikan Asia Pacific University (APU), students study intensively to improve their proficiency in Japanese, including scientific and technological Japanese. When necessary, they may also choose to undertake additional training in English. Along with their language studies, students take basic courses in math and physics, providing a solid foundation for further study in more specialized fields.

STEP 2



Conditions for transfer

Students who have studied for 1 to 1.5 years at APU and have completed the designated Japanese language and foundation subjects may transfer to an accepting department in the College of Science and Engineering (eight departments) or the College of Information Science and Engineering (four departments) at Ritsumeikan University. Transfers may only take place in April.

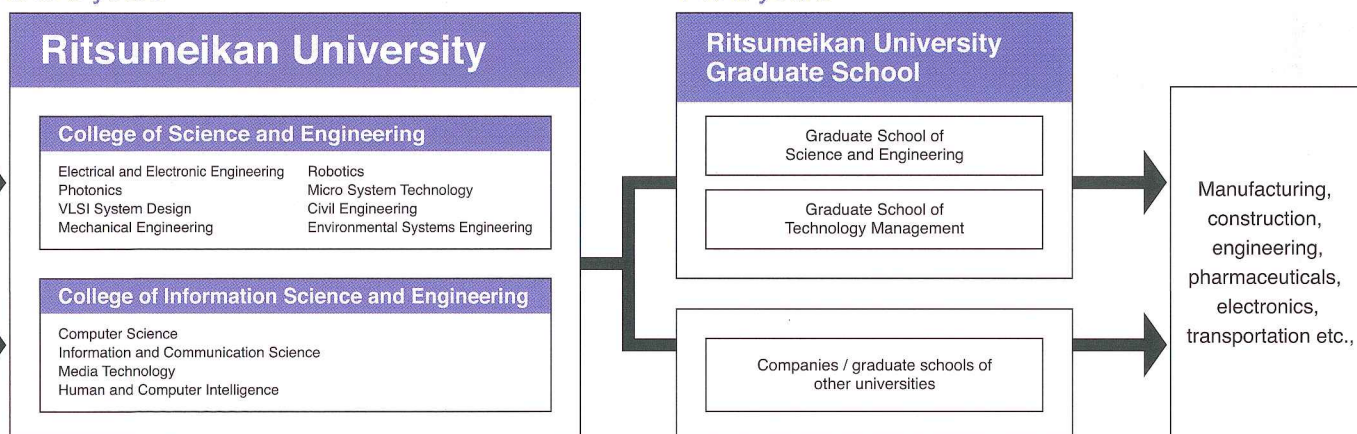


Seok Won Chang
Korea
Kyunggi High School

The Joint Program is for foreign students who wish to enroll in the College of Science and Engineering at Ritsumeikan University, but have little or no experience in the Japanese language. Enrollees spend between one to one and a half years at APU mastering the Japanese language, including learning specialized terminology before transferring to Ritsumeikan University to commence studying their major. APU is a reflection of our globalizing world. Studying in this environment has greatly broadened my perspective and has had a positive effect on my social values. With academic excellence, cultural diversity and a worldwide network, APU is a fine university that offers a unique educational experience unattainable at other institutions. From exciting festivals to club activities, I will never forget the time I spent at APU.

2 to 3 years

1 to 2 years



STEP 3

Specialized studies in cutting-edge technology

Upon transferring to Ritsumeikan University, students enter the second-year program. They take specialized courses prescribed by the curriculum, and if necessary may also take the basic major courses studied by first-year Japanese students. From their fourth year they are assigned to a research laboratory and work at the cutting edge of technology using the advanced facilities and equipment available at the Biwako-Kusatsu Campus.

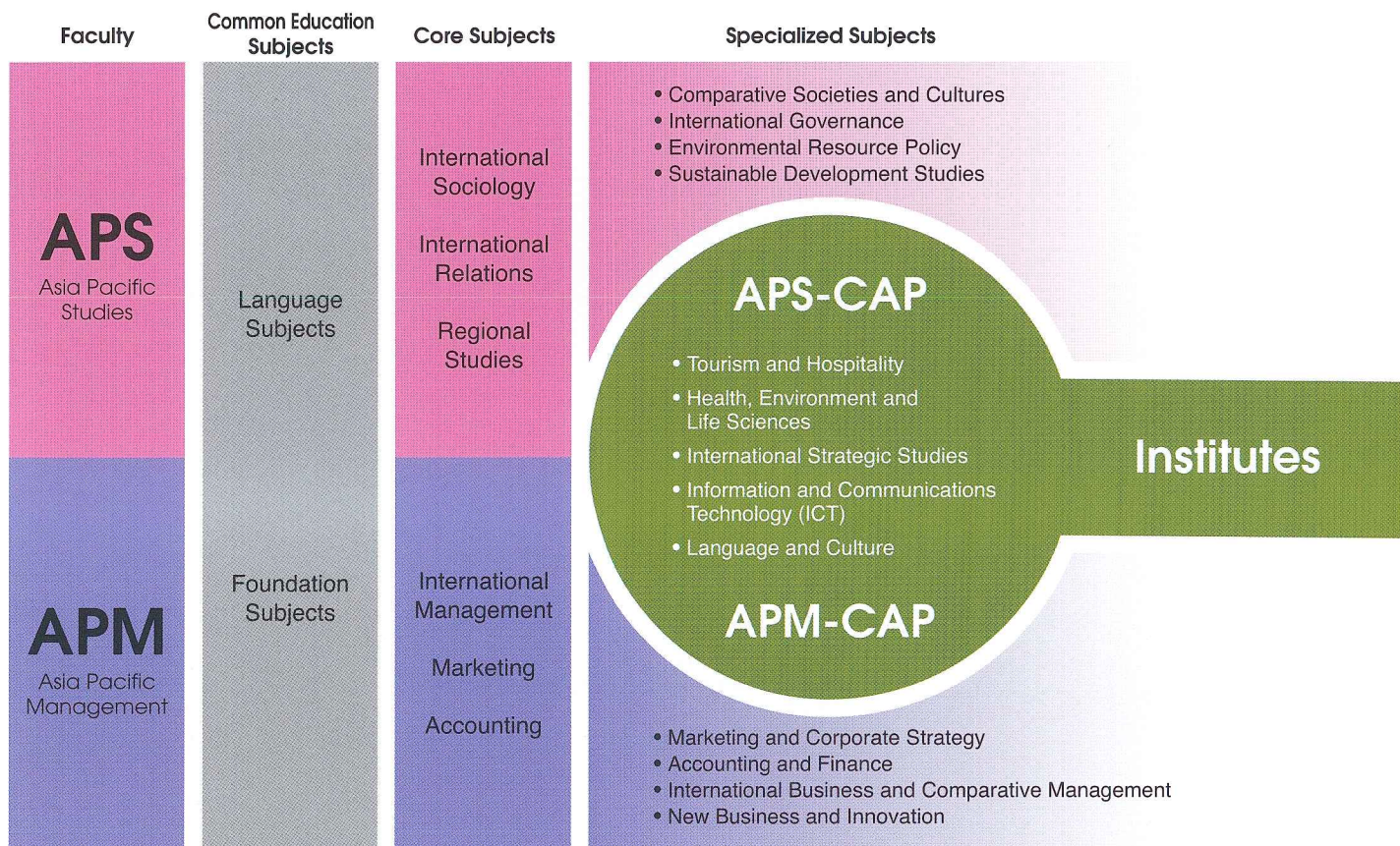
STEP 4

Post-graduate Study

Obtaining the required credits from the College of Science and Engineering or the College of Information Science and Engineering opens the door to studying in either the Graduate School of Science and Engineering or the Graduate School of Technology Management.

raduate School

An investment in a graduate degree will open your mind and change the way you view the Asia Pacific region. This is a program designed for people who want to challenge their beliefs and transcend cultural barriers and for people who, more than anything else, want to make a positive difference in the world.



Jovana Cosic

Serbia
University of Belgrade

Coming from Serbia, a small country in southeastern Europe, my stay and study at APU has been a unique experience that has helped expand my academic and cultural knowledge. I chose the IMAT program because I believed it would be the best choice following my previous education in the environmental field. It is a well composed program designed to create experts in the field of material-flow management. I highly recommend it to students contemplating a career in this field.



Soheli Azad

Bangladesh
University of Chittagong

After completing a one-year post as a Visiting Research Fellow at Kobe Gakuin University in Japan, I decided to come to APU to pursue my second Masters in ICP. I chose APU for its international environment, its incomparable research data base and the comprehensive academic guidance from the supervisor and other faculty members at the graduate school. I am now pursuing a PhD in the field of volatility in Asia-Pacific foreign exchange and stock markets. I am immensely satisfied with my decision to further my education here.



GSA

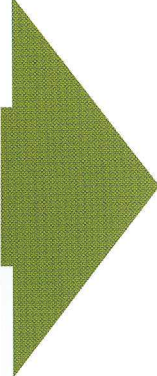
GRADUATE SCHOOL OF ASIA PACIFIC STUDIES

The Graduate School of Asia Pacific Studies fosters specialists capable of contributing to the sustainable development of the Asia Pacific, and plays an important role as a network centre for research into the Asia Pacific region.

- Master's in Asia Pacific Studies
- PhD in Asia Pacific Studies

CONTEMPORARY JAPAN STUDIES (NEW)

This program reflects on areas of contemporary Japanese politics, economics, culture, and society, which form the basis of a variety of research issues in the Asia Pacific region. Second semester of the program will be spent at Ritsumeikan University in Kyoto.

- 
- All classes are conducted in English. No Japanese language ability required.
 - Two admission periods per year: April and September.
 - Degrees can be completed on an intensive basis (minimum of one year or 18 months for the Masters / two years for the Doctorate).
 - Internships and fieldwork are offered using the international network of the Ritsumeikan Trust.



GSM

GRADUATE SCHOOL OF MANAGEMENT Master of Business Administration (MBA)

Until recently, many believed that it was necessary to enroll in a US graduate school to obtain a quality MBA. APU's Graduate School of Management offers the same quality here in Japan, with a unique emphasis on Asian business.

Concentrations are offered in:

- Finance
- International Business and Marketing
- Innovation and Technology Management

INTERNATIONAL COOPERATION POLICY MASTER'S DEGREE

Employing an issues-based approach, students examine regional social, cultural and political issues from a perspective of 'Asia in the global arena'. Focuses include:

Tourism and Policy Administration
Development Economics
International Public Administration
Environmental Policy and Administration

PUBLIC HEALTH MANAGEMENT MASTER'S DEGREE (NEW)

With a focus on policy management and the administration of medical and health services in developing countries, this program shall develop human resources in accordance with policy direction aimed at practical solutions to the problems enveloping the Asia Pacific region.

INTERNATIONAL MATERIAL FLOW MANAGEMENT (IMAT) (NEW)

Japan-Germany Dual Master's Degree

This is a multidisciplinary program integrating finance, environmental management and engineering, with practical applications on economic development and environment protection. Students will earn two degrees in humanity and engineering from APU, Japan and the University of Applied Sciences, Trier, Germany.

COMPARATIVE INSTITUTION DESIGN FOR TRANSITION ECONOMY AND BUSINESS MANAGEMENT MASTER'S DEGREE (NEW)

This program shall develop global leaders able to actively apply the world's human resources, technology, funds, and mobile knowledge to the economic and administrative development of their own countries whilst building networks within a globalized financial market.

Career Planning

A 99% Employment Record

99.1% of Domestic Students /
98.9% of International Students Offered Jobs

An APU degree gives you the opportunity to compete for jobs at the highest level, and in a huge range of industries. APU graduates face demanding expectations and tough competition in the job market; our careers service aims to equip you to win those competitions. Teaching you how to market yourself and how to compete to win the top jobs is the goal of our careers service. Over the course of your study we will provide you with interview training, develop your networking skills, assist you to produce the perfect CV and see that you are prepared for anything the job market can throw at you. APU has an enviable career record of **99%** for students seeking employment in Japan.



See page 48 for
major employers
for 2006.



Kylie
Pearce
Australia
Warrandyte High
School

My first step towards job hunting was to get advice from APU graduates now working in Japan. After that I applied to various companies in the country. At APU's On-Campus Recruiting Seminars where many top Japanese corporations gather, I was able to expand my network as well as learn more about each company. I was offered a position from IBM Japan, Ltd. and accepted as I was attracted to the corporate culture that will recognize my ideas and proposals. I look forward to gaining practical business experience here in Japan.

APU Career Development Program

STEP 1

When first enrolling in APU, students complete a Career Questionnaire, giving information about their desired career path after graduation. Based on this information, students can consult the Career Office regarding courses of study and other matters at any time.

STEP 2

Leaders of international organizations and individuals active on the front lines of various fields are invited to speak to groups and in open meetings. This helps students understand what they should be aiming for at university.

STEP 3

Internships, which provide valuable practical experiences, are offered to students. Students become aware of their strengths and weaknesses through on-the-job experience, and gain a feel for the difficulties and problems of employment in real life.

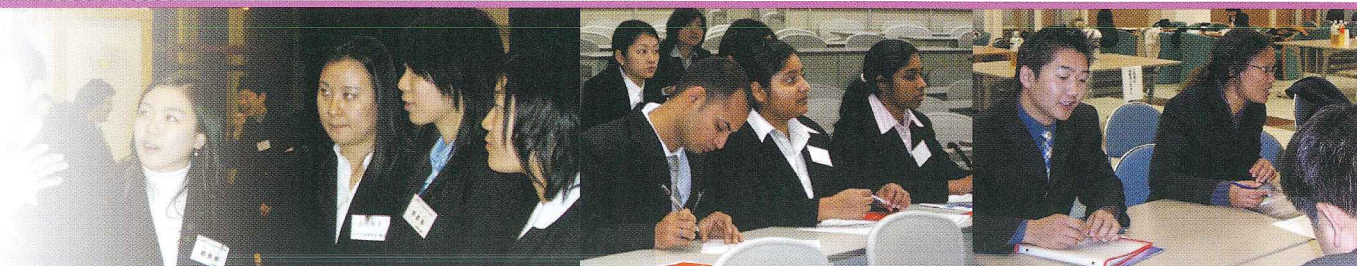
STEP 4

The Career Office provides employment information on businesses and organizations in Japan and overseas. As well as specific support and guidance on employment, the office also introduces students individually to businesses and organizations.



Jessica Fidelia
Wijaya
Indonesia
Kincoppal Rose
Bay School

The good point of on-campus recruiting is that besides minimized costs from not needing to go to major cities like Osaka or Tokyo for interviews, the established connection between APU and companies makes the flow of recruitment easier and more convenient, especially for international students. Success in job hunting is strongly dependent on interviews. While Japanese skill is important, the ability to communicate uniqueness is the key. Skills in resume writing and written examinations are of course essential and if you impress the interviewers, you will be considered for the next round.



On-Campus Recruiting

On-Campus Recruiting at APU offers the opportunity for company and organization personnel to come directly to APU to hold seminars, interviews and other recruitment activities. It is also an excellent chance for recruitment personnel to see for themselves the caliber of APU students and the dynamic multicultural environment in which they study. In the 2006 academic year, a total of 282 companies and organizations – a significant increase on figures for previous years – visited APU for on-campus recruiting, linking a large number of APU students to employment in Japan and overseas locations.

Visiting Corporations & Organizations (as of April 1, 2007)

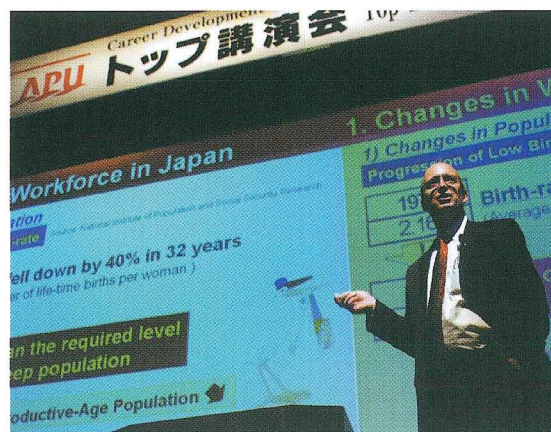
Acom Co., Ltd.	JGC Plantech Co., Ltd.	Mitsui Sumitomo Insurance Pte., Ltd., Singapore Branch	Showa Denko K.K.
Adecco Ltd.	Joyfull Co., Ltd.	The Miyazaki Taiyo Bank, Ltd.	Softbank BB Corporation
Aisan Industry Co., Ltd.	JTB Kyushu Corporation	Murata Machinery, Ltd.	Softbank Technology Corporation
Ajinomoto Co., Inc.	Kamigumi Co., Ltd.	Murata Manufacturing Co., Ltd.	Sony Corporation
All Nippon Airways Co., Ltd.	Kaneka Corporation	Nidec Power Motor Corporation	Sumisho Lease Co., Ltd.
Asahi Breweries, Ltd.	Kao Corporation	Nippon Light Metal Co., Ltd.	Sumitomo Chemical Co., Ltd.
Asahi Kasei Corporation	Kawasaki Thermal Engineering Co., Ltd.	Nippon Express Co., Ltd.	Sumitomo Corporation
Autobacs Seven Co., Ltd.	Kawashima Selkon Textiles Co., Ltd.	Nipponkoa Insurance Co., Ltd.	Sumitomo Electric Industries, Ltd.
Banking Corporation	Kenko.com, Inc.	Nippon Steel Corporation	Sumitomo Mitsui Banking Corporation
Brother Industries, Ltd.	Kinden Corporation	Nippon Travel Agency Co., Ltd.	Sumitomo Rubber Industries, Ltd.
Canon Inc.	Kobelco Construction Machinery Co., Ltd.	The Nishinippon Shimbun	The Sumitomo Trust & Banking Co., Ltd.
Chiikikagakukenkyusyo, Inc.	Kokuyo Co., Ltd.	Nissan Motor Co., Ltd.	Sumitomo Wiring Systems, Ltd.
Citigroup	Komatsu Ltd.	Nomura Securities Co., Ltd.	Sumitomo 3M Limited
Clarion Co., Ltd.	Komeri Co., Ltd.	NSK Micro Precision Co., Ltd.	Sunstar Inc.
Club Tourism International Inc.	Kumagai Gumi Co., Ltd.	NTT Communications Corporation	Taisei Corporation
Daido Life Insurance Company	Kumon Institute of Education Co., Ltd.	NTT Data Corporation	TDK Corporation
Daikin Industries, Ltd.	Matsushita Electric Industrial Co., Ltd.	Oita Bank Co., Ltd.	Technosmile, Inc.
Daiwa House Industry Co., Ltd.	Matsushita Electric Works, Ltd.	Ono Pharmaceutical Co., Ltd.	Teijin Limited
Daiwa Securities SMBC Co. Ltd.	Meiji Yasuda System Technology Co., Ltd.	ORIX Corporation	Tokai Rubber Industries, Ltd.
Dell Inc.	Meidensha Corporation	Panasonic Communications Co., Ltd.	Tokio Marine & Nichido Fire Insurance Co., Ltd.
Denso Corporation	Metal One Corporation	Pasona Inc.	Toppan Printing Co., Ltd.
Fast Retailing Co., Ltd.	Mitsubishi Chemical Corporation	Penta-Ocean Construction Co., Ltd.	Toray Industries, Inc.
Fujitsu Limited	Mitsubishi Kagaku Media Co., Ltd.	P.T. Asuransi Mitsui Sumitomo Indonesia	Toyota Tsusho Corporation
Fuji Xerox Co., Ltd.	Mitsubishi UFJ Securities Co., Ltd.	Recruit Co., Ltd.	Tutuanna Co., Ltd.
Funai Consulting Co., Ltd.	Mitsubishi UFJ Trust and Banking Corporation	Rohm Co., Ltd.	Unicharm Corporation
Furukawa Automotive Parts Inc.	Mitsuboshi Belting Ltd.	Saishunkan Co., Ltd.	West Japan Railway Company
Hakko Corporation	Mitsui Chemicals, Inc.	Sankyu Inc.	Yamatake Corporation
Hitachi Kokusai Electric Inc.	Mitsui & Co., Ltd.	Sanwa Shurui Co., Ltd.	Yazaki Corporation
Hitachi, Ltd.	Mitsui O.S.K. Lines, Ltd.	Sato Corporation	YKK Corporation
IBM Japan, Ltd.	Mitsui Sumitomo Insurance Co., Ltd.	Secom Co., Ltd.	
Imasen Electric Industrial Co., Ltd.	Mitsui Sumitomo Insurance Co., Ltd., Shanghai Branch	Senshukai Co., Ltd.	
Inabata & Co., Ltd.	Mitsui Sumitomo Insurance Co., Ltd., Thailand Branch	The Shiga Bank, Ltd.	
INAX Corporation		Shin Nippon Air Technologies Co., Ltd.	
Infocom Corporation			
JAL Information Technology Co., Ltd.			



Top Executive Lecture Series

Exposing students to global affairs and economic issues

Presented by executives from international corporations and key figures from a variety of industries, the lectures of the Top Executive Lecture Series attract a large audience of students and local citizens eager to learn about current issues facing the political and business world. These lectures raise students' awareness of labor market needs and trends, helping students to form a clearer vision of their career path.



Mark Du ree, Chairman & CEO of Adecco Ltd.

Countries and regions of students who have secured jobs in Japan.

USA	Ethiopia	Kenya	Thailand	New Zealand	Finland	Moldova	Zambia	Cameroon
England	Australia	Syria	Taiwan	Nepal	Vietnam	Morocco	Peru	Uganda
Iran	Ghana	Singapore	China	Pakistan	Mali	Mongolia	Ukraine	
Indonesia	Canada	Sudan	Tonga	Bangladesh	Malaysia	Lithuania	India	
Uzbekistan	Korea	Sri Lanka	Nigeria	The Philippines	Myanmar	Russia	Bulgaria	

Lecture topics and presenters

HIRAMATSU Morihiko Former Governor, Oita Prefecture	"Living Together with Asia: Local Diplomacy and the 'One Village, One Product Movement'"
NISHIMURO Taizo President and CEO, Toshiba Corporation	"Global Market Trends and Toshiba's Challenges"
AKASHI Yasushi Representative of the Government of Japan on Peace-Building, Rehabilitation and Reconstruction in Sri Lanka Former Under-Secretary-General, The United Nations	"Japan's Role in the International Community: What is International Contribution?"
Alfonso T. YUCHENGCO Chairman, The Yuchengco Group of Companies & Former Ambassador of the Republic of the Philippines to Japan	"Philippines-Japan Economic Cooperation after the Financial Crisis"
SHIINA Takeo Senior Advisor, IBM Japan, Ltd.	"Coexistence with Diverse Cultures: The Story of IBM Japan"
TERAZAWA Masao President & CEO Hewlett-Packard Japan, Ltd.	"The Future of the Internet and Expectations of APU Students"
ATA Shinichi President, Microsoft Japan, Ltd.	"Unlimited Potential"
MITARAI Fujio President & CEO Canon Inc.	"Canon's Corporate Strategies"
Mark DU REE Chairman & CEO, Adecco Ltd.	"World-Leading Adecco Predicts!: Futuristic Design for the Employment System"
KOBAYASHI Yotaro Chief Corporate Advisor of Fuji Xerox Co., Ltd.	"Overcoming the Challenges of a New Era"
KUROKAWA Hiroaki President Fujitsu Limited	"Turning Dreams Into Reality – Challenge the Frontiers of Innovation"
TAKAHASHI Tadao Member of the Board of Directors Executive Vice President Nissan Motor Co., Ltd.	"Globalization of NISSAN – How to live at a time of global business"
OHASHI Yoji Chairman of the Board of Directors All Nippon Airways Co., Ltd.	"Anshin, Attaka, Akaruku Genki! – ANA, aiming to be the No.1 Airline in Asia"

*Titles current at time of event

Internships

On-the-job experience to enhance real-world skills

Internships occupy an important place in APU's Human Resources Development Program - a program created through collaboration with industry, academia and government. A feature of APU's constantly expanding internship program is a system that enables internship participation to be converted into academic credits. Internships provide an invaluable opportunity for students to think about their future seriously and in concrete terms. For host organizations, internships offer the chance to come into direct contact with APU students and potential human resources for the future.

Companies and organizations offering internships (as of April 1, 2007)

Adecco Ltd.	Japan National Tourist Organization (JNTO)	Oita Mirai Shinkin Bank
All Nippon Airways Co., Ltd	Japan Productivity Center For Socio-Economic Development	Oita Prefectural Office
ANA Hotel Oita Oasis Tower	Japan Sun Industries	RKB Mainichi Broadcasting Corporation
Asahi Kasei Corporation, Nobeoka Office	Japan Tourism Marketing Co.	Secretariat of the Fukuoka Asian Culture Prize Committee, International Affairs Department, General Affairs & Planning Bureau, Fukuoka City
Beppu City Hall	Kokuyo Kyushu Sales Co., Ltd.	The Asahi Shimbun Company (Seibu)
Bright Career Inc.	Korea Trade Center, Fukuoka	The Oita Bank, Ltd.
Caohagan Island Club Inc.	Kumagai Gumi Co., Ltd	The Shiga Bank., Ltd.
FM Fukuoka Inc.	Kyushu Bureau of Economy, Trade and Industry	Tokiwa Co., Ltd.
Fujitsu Kyushu Systems Engineering Limited	Ministry of Education, Culture, Sports, Science and Technology	TOS Enterprise Co., Ltd.
Hotel Nikko Fukuoka	Nippon Express Co., Ltd., Oita Branch	Tropical Agriculture & Forestry Technical Development Association (TAFTDA)
Iida City Hall, Nagano Prefecture	Nippon Light Metal Co., Ltd.	U.N. Association of Japan
International Tourism Center of Japan (ITCJ)	NTT West-Nakakyushu Corporation (Oita)	Yazuya Co., Ltd.
Japan External Trade Organization (JETRO): Head Office & Overseas Offices	Oita Air Terminal Co., Ltd.	
Japan External Trade Organization (JETRO), Oita Trade Information Center	Oita Cable Telecom Co., Ltd.	
Japan International Cooperation Agency: Kyushu International Center, U.S. Office, Philippines Office	Oita Information House Co., Ltd	



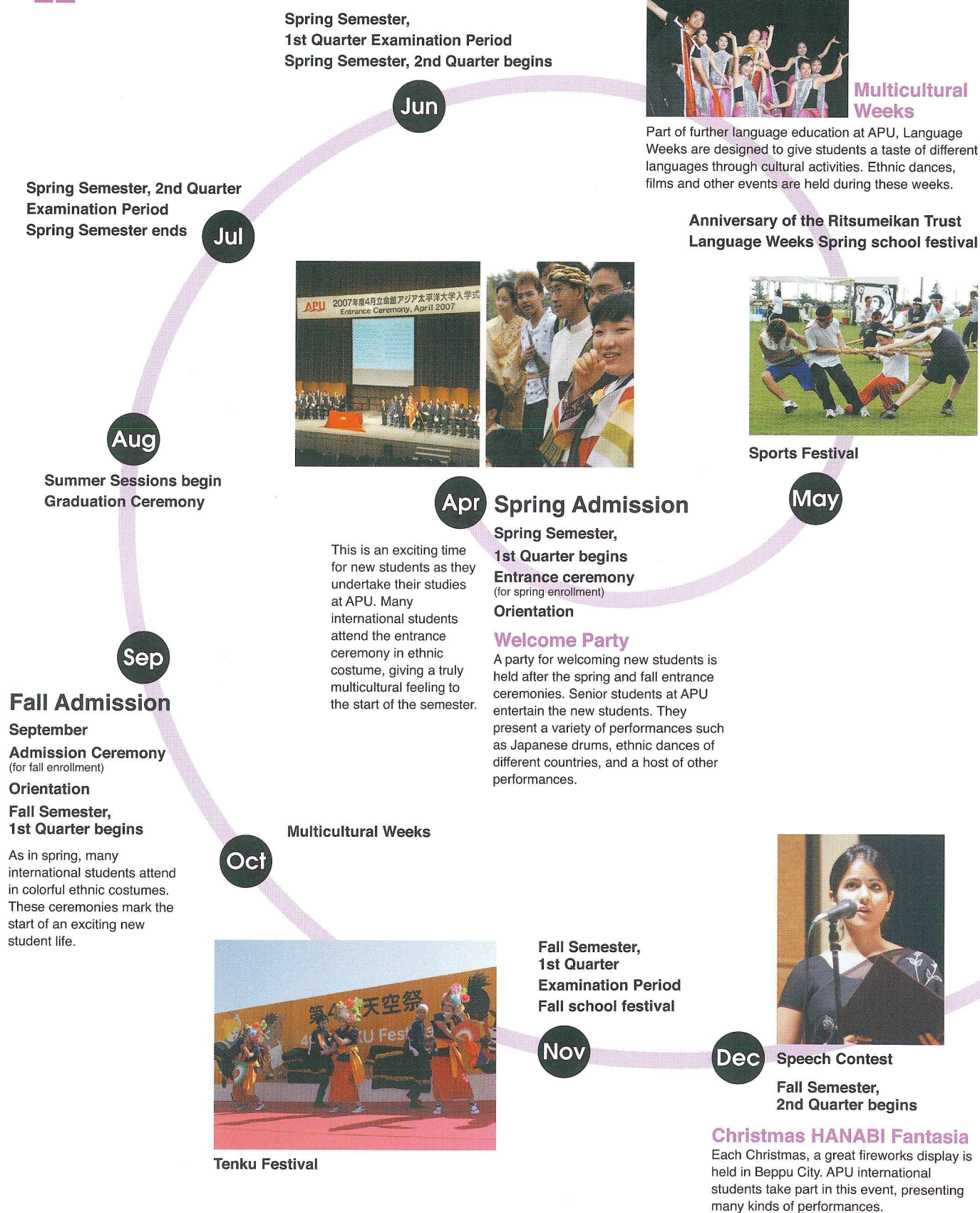
Thi Thuy Duong Le
Vietnam
Hanoi - Amsterdam
High School

One of the highlights of my 4 years at APU were the internships. As an English-based student, I lacked confidence in my Japanese ability and was unfamiliar with the Japanese administrative style. However, the Career Office kindly and thoroughly assisted me with all necessary preparations, instilling me with the confidence to do my best during the internships. My internship was with various organizations, one of which was the Japanese Ministry of Economics, Trade and Industry (METI). The staff at each of the host organizations were very cooperative and encouraging, allowing me to have fulfilling internships with many lessons learnt.

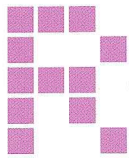


URL: <http://www.apu.ac.jp/careers>

event Schedule



URL: <http://www.apu.ac.jp/admissions/modules/livinginfo>



Recreational Clubs and Activities

APU student clubs and activities pull together many facets of life for students. Get involved in one of these organizations and you'll find that you are trying out ideas from a class, gaining a new skill, deepening friendships, relieving stress, and having a great time. Some of these clubs have taken part in tournaments and competitive events on a national level where they have recorded outstanding achievements. If you take the initiative and invest the time, you can find, invent, and develop any experience that suits you.



Graduation Ceremony

Mar

Feb

Winter Sessions begin

Jan

Fall Semester, 2nd Quarter
Examination Period
Fall Semester ends

New Year on the APU Campus

Countdown parties and other lively events are organized for New Year's Eve at AP House. After watching the sunrise on New Year's Day, students have the chance to take part in various traditional Japanese events.

Culture/Arts

- Baton
- Ballet Dance
- Brass band
- Broadcasting / Research on information media
- Dance
- DJing & party events
- Exchange activities through music
- Film making
- Fine Arts
- Game of GO
- Japanese traditional dance
- Japanese traditional dance "Arauma odori"
- Japanese drumming
- Japanese Flower Arrangement
- Kagura
- Korean traditional musical instrument
- Music performance
- Okinawan traditional culture "Eisa"
- Piano performance
- Play Koto and Shakuhachi
- Singing a gospel song
- Tea ceremony
- YOSAKOI Original Dance

Social and Service

- Chinese study
- Realization of "Sustainable development"
- Support for the children in Thailand
- Transmission of information on Beppu

Academic research

- A new style tourism in Beppu
- Academic Research of Environment
- Debate about international relations
- Empowering the youth to engage in international development
- Japanese teaching
- Local exchange / international exchange
- Promoting international mutual understanding
- Research / activities on international cooperation
- Research on trading, marketing and logistics
- Researching environmental issues
- Spanish study
- Simulation of UN activities
- Study and research on marketing
- Tourism development
- To study Korean language

Sports

- Aikido
- Basketball (Men's)
- Basketball (Women's)
- Badminton
- Baseball
- Badminton (recreation)
- Cheerleading
- Climbing
- Double dutch
- Floor Hockey
- Field hockey
- JUDO
- Karate
- Kendo
- Kick Boxing
- Kyudo (Japanese archery)
- Lacrosse(Women's)
- Lacrosse(Men's)
- Paragliding
- Rugby
- Soccer
- Soccer (recreation)
- Softball
- Soft Tennis
- Shorinji Kenpo
- Swimming
- Soft volleyball
- Sailing
- Track & road races (middle & long distance)
- Table tennis
- Tennis
- Tae Kwon Do
- Volleyball (Men's)
- Volleyball (Women's)

Ai-no-nami (Wave of Love)

Ai-no-Nami encourages people to become aware of what they can do to change the world. Even the smallest change can have a big impact. Ai-no-Nami is the place where you can experience that first hand. When I went to the Tsunami affected area, my courage was tested. I had to overcome my fears in order to reach out and directly help the victims with my own hands. On a beach in Aceh, an area affected by the tsunami, I stood hand in hand with the children. I will never forget the lessons they taught me about grace, hope and my responsibility to help the world.



Reky Suarima Martha
Indonesia
SMUN 1 Yogyakarta



Karate Club

Upon enrolling at APU I eagerly joined the APU Karate club. After learning the martial Capoeira back home I was drawn to karate. I suffered from acute homesickness during my first six-months in Beppu, but found I was able to conquer it by growing strong both mentally and physically through the training sessions and from the support I received from my circle of friends. I have fond memories of participating in two tournaments, and winning my division in a local competition in Beppu city. Every year, I set a number of personal goals. This year I hope to attain a higher belt in karate and delve more into international law.



Lara Oliveria
Brazil
Integral School



Prengo



Shouhei Fujimoto
Japan
Onomichi-kita High School

With a year of experience as a high-school exchange student to Thailand, I am able to utilize my skills in Thai for furthering the activities of PRENGO. As part of field studies I have toured villages providing advice in the field of agriculture.



Poweenit Buranavorakul
Thailand
Triam Udom Suksa School

PRENGO gives me the opportunity to understand the framework of NGOs and at the same time bonds Thai and Japanese members. If volunteering is what you value, and you want to start making the difference, PRENGO might be what you are looking for.

Wadaiko "Raku"

On March 2, 2007, 40 APU students embarked on a journey to Taiwan to deepen their knowledge of Japan's traditional culture. The students all shared the same dream of serving as cultural ambassadors to contribute something to the world. With that dream fueling their passion, they endured hard training and long meetings to overcome difficulties they appeared along the way. The students from four traditional Japanese arts clubs, Mai-Raku, Eisa, Wadaiko-Raku and Arauma performed and engaged in cultural exchange at National Taiwan University and the National Taiwan Normal University. Those present were reminded of the importance of preserving one's traditional culture.



Wei Chen Lo
Taiwan
Tokyo Chinese School



facilities

A cutting-edge learning experience

Information literacy is considered a fundamental skill in today's society. Accordingly, here at APU, we continually upgrade our facilities and programs to help our students acquire these essential IT skills. All students are allocated an online user account and have access to information from the university via our IT network. Additionally, APU offers highly comprehensive IT support for research and study by providing over 1,300 computers on campus for students' use.

Over 2.3 Million Books

The library's resources include Japanese and foreign-language books, reference materials, newspapers, and magazines. Videos from various genres are also available. A computer network links APU's library with that of Ritsumeikan University, which has more than 2.3 million books. This enables a large variety of books and reference materials to be searched for and requested online.

Information-Processing Seminar Rooms

These seminar rooms are used for first- and second-year courses such as "Introduction to Information Science" and "Information Processing I". When the rooms are not in use for classes, the computers are available to students.

Computer-Assisted Instruction (CAI) Classrooms

CAI Classrooms are multi-purpose classrooms equipped with computers and audio visual equipment. These classrooms offer language laboratory facilities for improving practical language skills, and an online meeting room for exchanging opinions with others over the Internet.

Multimedia Room

This space offers an array of advanced computer terminals. Students can use the computers to browse the Internet to gather information and create reports for classes. Information Student Assistants are available in the Multimedia Room to answer questions.

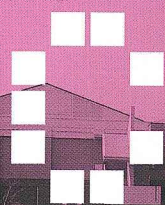


Lecture Halls

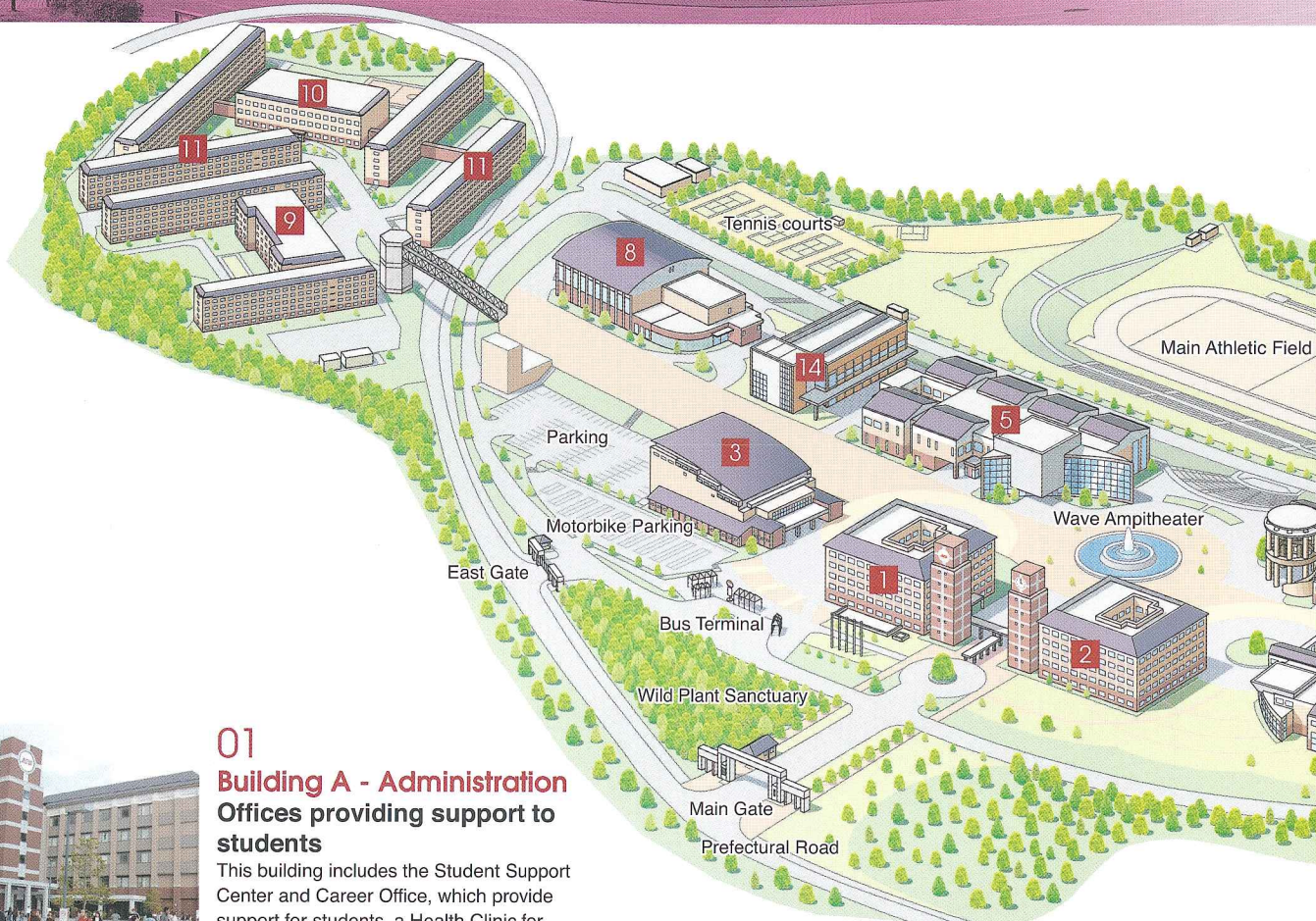
APU's Lecture Halls can accommodate classes of 30 to 300 students. Facilities include large screens and overhead cameras. APU also has distance lecture classrooms, where students can attend classes and seminars held at Ritsumeikan University in real time.



URL: <http://www.apu.ac.jp/media>



ampus Map



01 Building A - Administration Offices providing support to students

This building includes the Student Support Center and Career Office, which provide support for students, a Health Clinic for health-related consultations, and the Admissions Office where application and admission procedures are carried out.



02 Building B - Faculty Offices Advanced research is conducted in these offices.

This building contains individual faculty members' offices, the Ritsumeikan Center for Asia Pacific Studies, and the Seminar Project Room. It also houses the Academic Office, which provides advice for course planning and study abroad.



04 Building D - Media Center Advanced multimedia facilities

The Media Center is a hub for gathering and communicating all kinds of information. It also houses APU's library, advanced computer terminals, and Computer Assisted Instruction (CAI) classrooms, where students can polish their language skills using computers.



03 Building C - Millennium Hall

This large hall seats 730 people, and is used for international cultural events and conferences. It features a giant screen for presentations using video, cable TV and cameras.



05 Building E - Student Union

The first floor houses a cafeteria-style restaurant. On the second floor, there is a Japanese-style Room, a Music Studio, and a second Multimedia Lab. This building serves as a center for extra-curricular activities.



Fully equipped to host international events

Fitness Room

09, 10

In this dormitory, students from overseas live alongside students from Japan. Almost 800 students call AP House home, making it one of the largest international student dormitories in Japan.



11

Two new dormitories have recently been built to house a total of over 1,300 students. There are two kitchens on each floor, and the facilities for cooking have been improved. In the shared rooms, new domestic and international students will live together.



12

This facility is primarily used for seminars and lectures. It contains 17 classrooms each with a capacity for 30 students and a large lecture theatre with seating for 300 students. Three seminar rooms equipped with 70 computers, and 9 CAI classrooms with 25 computers are used to improve the language abilities of students.



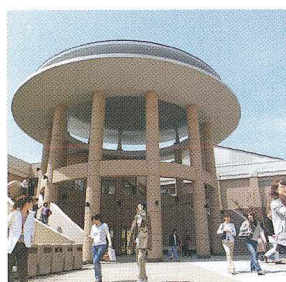
13

This building is home to the APU Confucius Institute which aims to promote Chinese language and cultural studies. It also contains the Language Institute, Self-Study Center, Language Faculty Offices and Consultation Rooms. Additional rooms include the CAP Lab and lounge for Crossover Advanced Program students.



14

The 1st floor contains the Co-op Shop which sells a wide variety of literature, food products, and miscellaneous everyday items. The 2nd floor encompasses a presentation space for student group activities and events and a multipurpose hall which may be used for seminars.



06

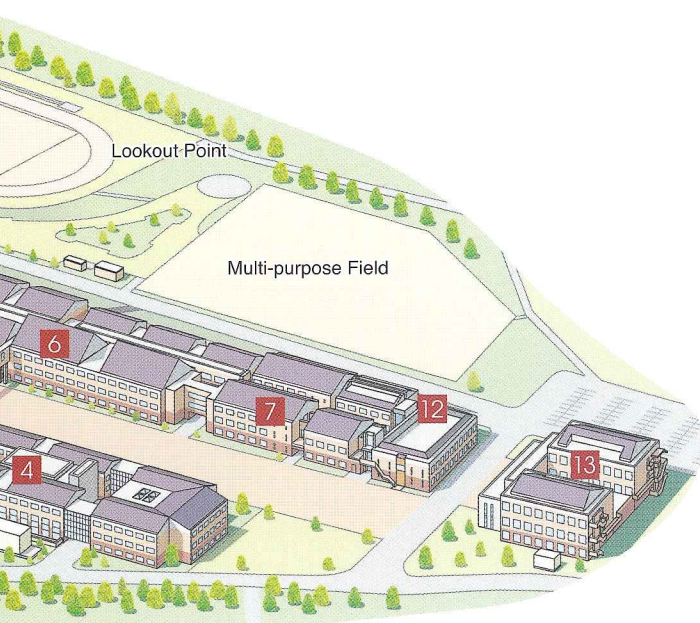
Fully equipped study center
This building houses the Distance Lecture Classroom, where students can take classes from Ritsumeikan University and other remote locations. There is also a Language Lounge for intercultural exchange among students.



07

A center for advanced research

This building serves as a center for research for the APU Graduate School, which was established in April 2003. It features large classrooms equipped with Hi-Vision systems.



accommodation

AP House

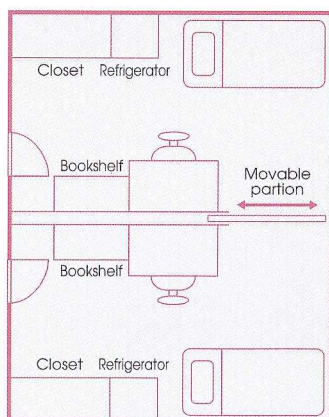
AP House (the student dormitory) is a secure and comfortable living environment where students from all over the world live side by side. Single and shared-type rooms are available, with approximately 13m² of space per person. All rooms are equipped with air conditioner, bed and refrigerator.

Occupants of single rooms have to share communal kitchen facilities with a larger number of people. The more spacious shared-type rooms feature a sliding door to ensure each student's privacy, as shown in the diagram below. Rooms are allocated so that international students share with domestic students, allowing occupants to have a truly intercultural dormitory experience. Shared-type rooms are especially recommended to those who are looking to rapidly improve their language skills within a short period of time.

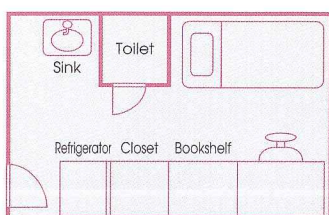
To further promote interpersonal relations among residents in the dormitory each building has Japanese-style rooms, meeting rooms, computer rooms, and a host of other facilities. Each floor has space for parties and other social events.

General Room (Shared Type)

Doors can be locked from the inside.



General Private Room



AP House Dormitory Fee

The Moving-in Fee for AP House is 32,000 yen, while the monthly rent for undergraduate students is 39,000 yen. Utilities (electricity, water etc) and bedding rental is included in this amount. However, meals are separate. For a detailed explanation on how to pay dormitory fees, please refer to the Admissions Information Booklet.

Dormitory Fees

Pre-enrollment AP House fees

Item	Amount in yen	
	April Enrollees	September Enrollees
Moving-in Fee	32,000 JPY	32,000 JPY
Security Deposit	58,000 JPY	58,000 JPY
Rent	39,000 JPY	58,500 JPY
Total	129,000 JPY	148,500 JPY

N.B April: One month's rent September: 1.5 month's rent

Monthly dormitory fee particulars

	Item	Amount in yen
	Accommodation Fee	29,000 JPY
Rent	Common Service Fee	3,000 JPY
	Utilities Fee	5,000 JPY
	Bedding Rental Fee	2,000 JPY
	Total Monthly Dormitory Fee	39,000 JPY

Dormitory fees are revised each year.

*With the exception of third year transfer students, the period of residence for AP House is normally 11 months.

Resident Assistants (RA)

Resident Assistants, senior APU students from various countries and regions, are available to assist international students living in AP House with their studies and everyday problems.

Security

AP House has an auto-lock system. Each resident student is issued with an ID card, and a 24-hour security system is in place at the entrance.



Resident Assistants helping new students move in.

Other Accommodation Options

Student Housing Off-Campus

After the first year at APU, most international students will move off-campus. The approximate cost of monthly rent in an apartment is about 30,000 - 40,000 JPY. However, there will be other costs such as moving-in fees, security deposit, etc. Residents will also be expected to pay for utilities, internet hook-up, etc. Additionally, there will be added transportation costs for students who live off-campus. Students have the choice of living in International Student Dormitories or moving into shared or single rented apartments around Beppu.

Independent Student Dormitories

Due to the large number of international students in Beppu, two international student dormitories have been constructed by various bodies. Many APU students choose to live here. APU Creo Heights has single rooms with a kitchen. PREVIO is a dormitory for women only, and all rooms are double rooms. Additionally, Oita International House, operated by Oita Prefecture, provides accommodation in downtown Beppu.



Abeysekera
Nadeeshani
Sri Lanka
Sri Sangamitta Balika
National School

Being an AP House Resident Assistant has been one of my greatest experiences. It has deepened my understanding of multicultural environments and enriched my life at APU. The most challenging but enjoyable time for me is the new-arrival's season. All the RAs prepare to welcome the new residents by attending the RA camp etc. Assisting close to around 1300 students is, needless to say, not an easy task. However, working to ensure that new residents have a comfortable life is a satisfying aspect of my RA life.



Renting Apartments (Single and Shared)

If you wish to live in shared accommodation, you can find many options for renting apartments off-campus through Creotec, a company created by the Ritsumeikan Trust to handle housing and campus management. The residence that Creotec provides is conveniently located near bus/train stations and the shopping district. The rooms are spacious and the facilities include shower/bath, toilet, kitchenette, closet, balcony, air conditioning, cable-TV hook up and auto-lock security door systems at the entrance of the buildings. The rent for most single apartments is 30,000 yen - 40,000 yen. This is significantly cheaper than what you would pay for a similar apartment in Tokyo/Osaka or other major cities in Japan. Many students move out of AP House after their first year and share apartments with friends to lower the cost of living.



Daniel
Balica Mihai
Romania
Theoretical High School
"Dunarea"

Since arriving at APU I have enjoyed many a day with friends from all over the world. The best times are spent with roommates. Since we are all striving to improve our language abilities, room sharing is highly beneficial for APU students. I am proud to say that after one year and a half, with help from my roommate, my Japanese has improved significantly. If you have friends who are willing to share an apartment with you, I highly recommend it. Your student life will be enriched in every possible way.



URL: <http://www.apu.ac.jp/admissions/modules/livinginfo>

eppu, a Resort Town

Hot springs

Liquid Tranquility

Beppu is a naturally formed water park where visitors can bathe in soothing warmth provided by Mother Nature herself. Beppu contains nine major geothermal hot spots, which are sometimes referred to as the "nine hells of Beppu". Beppu is also divided into 8 major hot spring areas, otherwise known as Beppu Hatto. The 8 areas are Beppu, Kitahama, Kamegawa, Shibaseki, Kannawa, Myoban, Horita and Hamawaki.



Sunayu

Environment

Things to See and Do

Students have little trouble finding ways to amuse themselves in Beppu. A large population means there are many entertainment options, and societies exist for everything from martial arts to pottery, traditional music, painting and skiing.



Hot Spa Santarium



B-con Plaza (Convention Hall)

Explore

Daily Dose of Relaxation

The picturesque backstreets surrounding the hot springs are perfect for a walk to explore the nearby shrines, old shops and other historic spots. The quaint labyrinth-like streets always offer something new and unexpected to be discovered.



Takegawara Alleyway



Chi-no-Ike Jigoku (geothermal pit)

A safe haven for tourists

The City of Beppu is one Japan's most popular tourist destinations. Each year it attracts over 11 million visitors who come to enjoy its picturesque bayside location. Beppu's residents are proud custodians of the world's second largest outflow of hot springs (Onsen) and some of the most spectacular natural scenery and old-style Japanese architecture.

The international student population of APU has invigorated the local restaurant scene with a variety of ethnic cuisine and made Beppu one of the most cosmopolitan cities in Japan. The city has an estimated population of 123,015 (April 2006) of which 2,500 are foreign students.

Transport

Getting Around

Public transport is comprehensive, although many students find travel by motorbike or bicycle ideal. A convenient way of getting to Beppu is from Fukuoka by highway bus. From the bus stop that is adjacent to APU, it takes 97 minutes to get to Fukuoka airport, and 138 minutes to the center of Fukuoka.



Beppu Station

Shopping

Bargain Finds

Most shops in Japan open at 10am and close around 6-9pm, while many supermarkets are open until midnight. Tokiwa, Beppu's largest department store stocks all items, from cooking utensils to cutlery to other household goods and even souvenirs. A smaller department store, Daiei, can also be found under Beppu Station. At Beppu's shopping arcade, located underneath the railway track, down from Beppu station, cheap vegetables, fish, and meat can be purchased.



Beppu Tokiwa

Affordable Living

Living Expenses

Beppu has been identified by the Ministry of Internal Affairs and Communications as having one of the lowest costs of living in Japan.

Cost of living for one month (estimate)

Accommodation 30,000 to 40,000 yen
Utilities 6,000 yen
Food 40,000 yen
Books, stationery, etc. 6,000 yen
Transport 8,000 yen
Other expenses 8,000 yen

Total 98,000 to 108,000 yen



URL: <http://www.city.beppu.oita.jp/>



Universities and Institutions Affiliated with the Ritsumeikan Trust

As of April, 2007 *The universities marked in **red** have hosted APU exchange students.

Asia

Bangladesh

University of Dhaka

China

Beihang University (Beijing University of Aeronautics & Astronautics)

Beihua University

Changchun University of Science and Technology

Changchun University of Technology

Changsha University of Science and Technology

China Coal Economic College

China Enterprise Confederation

China Executive Leadership Academy, Pudong

The Chinese University of Hong Kong

Chongqing Institute of Technology

Chongqing Jiaotong University

Chongqing Technology and Business University

Chongqing University of Science and Technology

City University of Hong Kong

Dalian City

Dalian University of Foreign Languages

Dalian University of Technology

Dongbei University of Finance and Economics

East China Normal University

East China University of Science and Technology

Fudan University

Fuzhou University

Guangxi Normal University

Harbin Institute of Technology

The Hong Kong University of Science and Technology

Institute for Tourism Studies, Macao (IFT)

Huazhong University of Science & Technology

Jiangxi Normal University

Jilin University

Jinan University

Nanchang City

Nanjing University

Nankai University

Northeastern University

Northwest Normal University

Peking University

Qingdao University

Qinghai Normal University

Renmin University of China

Shandong University

Shanghai Academy of Social Sciences

Shanghai Jiao Tong University

Shanghai University of Finance and Economics

Shenzhen University

Sichuan International Studies University

Sichuan University

Soochow University

Southwest Agricultural University

Southwest Jiaotong University

Southwest University

Southwest University of Political Science and Law

Tianjin University

Tonghua Teachers College

Tongji University

Tsinghua University

The University of Hong Kong

University of International Business and Economics

University of Science and Technology of China

Wuhan University

Xiamen University

Xi'an Jiaotong University

Xin Jiang Normal University

Yunnan Academy of Social Sciences

Zhejiang University

Zhongshan (Sun Yat-Sen) University

India

EMPI Group of Institution

Global Development Network

Jawaharlal Nehru University

University of Delhi

University of Madras

University of Pune

Indonesia

Andalas University

Brawijaya University

Gadjah Mada University

Indonesia Institute of the Arts Yogyakarta

Institut Teknologi Bandung

Local Government of West Sumatra

Trisakti University

Universitas Islam Negeri Syarif Hidayatullah

Universitas Negeri Surabaya

University of Indonesia

Jordan

University of Jordan

Korea

Ajou University

Cheju National University

Chung-Ang University

Daegu University

Dong-A University

Dongseo University

Ewha Womans University

Hanyang University

Inha University

Korea Institute of Industrial Technology

Korea Maritime University

Korea University

Kyung Hee University

Kyungwon University

Pohang University of Science and Technology

Pusan National University

Seoul National University

Sookmyung Women's University

Sungkyunkwan University

Ulsan Development Research Institute

University of Ulsan

Yonsei University

Laos

National University of Laos

Malaysia

Institute of Strategic and International Studies (ISIS) Malaysia

Universiti Malaysia Sabah (UMS)

Universiti Sains Malaysia (USM)

University of Malaya

Mongolia

Academy of Management

Mongolian University of Science and Technology

The Philippines

Ateneo de Manila University

De La Salle University

SEAMEO Regional Center for Graduate Study and Research in Agriculture

University of Asia and the Pacific

University of the Philippines

Singapore

Nanyang Technological University

National University of Singapore

Singapore Management University

The Singapore Polytechnic

Sri Lanka

Chartered Institute of Management Accountants

Information & Communication Technology Agency of Sri Lanka

National Science Foundation

Ruhuna University

University of Colombo

University of Moratuwa

Taiwan, R.O.C.

Academia Sinica

National Chengchi University

National Sun Yat-Sen University

National Taiwan Normal University

Southern Taiwan University of Technology

Tungshai University

Thailand

Burapha University

The Federation of Thai Industries (FTI)

National Institute of Development Administration, Thailand

Siam University

Thammasat University

United Arab Emirates

Higher Colleges of Technology

Vietnam

Hanoi University of Education

Hanoi University of Technology

Ho Chi Minh City University of Pedagogy

Ho Chi Minh City University of Technology

Ministry of Education and Training Vietnam

University of Hue

Vietnam National University, Hanoi

Vietnam National University, Ho Chi Minh City

Oceania

Australia

Australian National University

Charles Sturt University

Faculty of Law and Management, La Trobe University

James Cook University

Macquarie University

The University of Melbourne

University of the Sunshine Coast

Fiji

The University of the South Pacific

New Zealand

Asia 2000 Foundation of New Zealand

Auckland University of Technology

Massey University

Otago Polytechnic
Victoria University of Wellington

Samoa

National University of Samoa

North America

Canada

The New Okanagan College
Faculty of Business Administration, Simon Fraser University
The University of Alberta
The University of British Columbia
Faculty of Management, University of Lethbridge
University of Waterloo
Schulich School of Business, York University

U.S.A.

Alfred University
American University
Association of Professional Schools of International Affairs (APSIA)
Butler University
California Institute of Integral Studies (CIIS)
California State University, Fresno
De Paul University
Georgetown University
Georgia College and State University
The Georgia Institute of Technology
Illinois College
International Student Exchange Program (ISEP)
National Football League
Oklahoma City University
Rensselaer Polytechnic Institute
Rutgers, The State University of New Jersey
St. Edward's University
Simmons College
The University of Alabama
University of Hawaii
The University of Montana
University of Oklahoma
University of Pittsburgh
University of San Francisco
University of Southern California
The University of Washington
University of Wisconsin Oshkosh
University of Wyoming
Vanderbilt University School of Engineering
Vassar College
Western Michigan University

South and Central America

Argentina

Universidad Argentina de la Empresa
Universidad Nacional de La Plata
Universidad Nacional de Rosario
Universidad Torcuato Di Tella

Costa Rica

University for Peace

Ecuador

Universidad Del Pacifico

Jamaica

Northern Caribbean University

Mexico

Instituto Tecnológico Y De Estudios Superiores de Monterrey
Universidad Iberoamericana

Peru

Academia Diplomática del Perú
Catholic University of Peru
Graduate School of Business Administration
Lima University
National Agrarian University at La Molina
National Engineering University
Pacific University
Peruvian University Cayetano Heredia

Europe

Austria

Steyr School of Management (University of Applied Sciences Upper Austria)
University of Applied Sciences bfi Vienna

Belgium

Ghent University
University Institute of Translating and Interpreting Studies, Haute Ecole de Truxelles
University of Liege

Bulgaria

University of National and World Economy-Sofia

Croatia

Zagreb School of Economics and Management

Denmark

Aarhus School of Business
Copenhagen Business School
The University of Copenhagen

Finland

Laurea University of Applied Sciences
Pirkanmaa University of Applied Sciences

France

École Normale Supérieure
ESCI
Groupe Ecole Supérieure de Commerce (ESC) de Rouen
Groupe Ecole Supérieure De Commerce Et De Management
ICN Business School
Institut d'Etudes Politiques de Bordeaux
Institut d'Etudes Politiques de Paris
Institut Supérieur du Commerce Paris
Toulouse University of Social Sciences
Université De Toulouse-Le Mirail
Université Michel de Montaigne - Bordeaux 3
University of Paris I , Pantheon-Sorbonne

Germany

Albert-Ludwigs-Universität Freiburg
Asko Europa Stiftung
Barvarian Julius Maximilian University of Würzburg
Humboldt University of Berlin
Otto-von-Guericke-Universität Magdeburg
Saarland University
The University of Cologne
The University of Tübingen
Trier University of Applied Sciences
University of Münster

Greece

National and Kapodistrian University of Athens

Hungary

University of Pécs, Faculty of Adult Education and Human Resource Management

Iceland

University of Iceland

Ireland

Dublin City University

Italy

Istituto Universitario Orientale

Kazakhstan

Kazakh Economic University named after T.Ryskulov

Lithuania

Vilnius University

The Netherlands

Institute of Social Sciences (ISS)
Leiden University
Tilburg University

Norway

BI Norwegian School of Management
University of Bergen

Poland

The Polish Academy of Sciences
Warsaw School of Economics

Russia

Far Eastern National University
Saint-Petersburg State University School of International Relations

Spain

Universidad de Alcalá
The University of Granada
University of Santiago de Compostela

Sweden

Department of Business Administration, Lund University
Jönköping International Business School
Malmö University
Södertörns högskola
Växjö University

Switzerland

School of Management, Zurich University of Applied Sciences

United Kingdom

Centre for Alternative Technology charity Ltd
The Glasgow School of Art
Lancaster University
Royal Holloway, University of London
SOAS, University of London
University of Edinburgh
University of Kent
University of Sussex at Brighton
University of Warwick
University of Westminster

Africa

Kenya

Jomo Kenyatta University of Agriculture and Technology

The R. of South Africa

The University of Pretoria

President

CASSIM Monte

③Environmental Science, Systems Design and Technology Development, Knowledge Discovery for Policy Support, International Cooperation for the Promotion of Peace and Development, Urban and Regional Development

College of Asia Pacific Studies

Professors

COOPER Malcolm J. M.

①Ph.D. (Urban and Regional Studies), University of Birmingham
②Asia Pacific Tourism/Tourism Policy/Environmental Law and Administration
③Tourism policy and regional administration in the Asia Pacific/Environmental and Resource Conservation

EADES Jeremy S.

①Ph.D. (Social Anthropology), Cambridge University, UK
②Cultural Anthropology/Cultural Sociology
③Sociology and anthropology of the Asia Pacific region

FELLIZAR Francisco P.Jr.

①Ph.D. (Public Administration), University of the Philippines
②Urban Environment/Environment Studies in the Asia Pacific
③Environment and natural resources management, human ecology

FUKUI Hayao

①Doctor of Agriculture, Kyoto University
②Introduction to AP I : Southeast Asia/Perspectives on AP Studies
③Thamnop: a traditional irrigation system in Southeast Asia

GUNARTO Hary

①Ph.D. (Electrical and Computer Engineering), Washington State University, USA
②Information Technology/Information Processing I, II
③Computer networks, data communications, information technology, management

HATADA Nobuyuki

②Tourism Development and Planning/Contemporary Science and Technology/The Travel Industry
③Sustainable tourism development in Pacific island countries

HECK Peter M.

①Ph.D. (Geography), University of Saarland

IMAI Osamu

②International Organizations/International Public Administration

ITO Hisayasu

①Ph.D. (Biblical and Religious Studies), University of the Free State, South Africa
②English
③Pragmatics and the Fourth Gospel, Pragmatics and English education

KEE Pookong

①Ph.D. (Psychology), Australian National University
②Multiculturalism and Society/Migration Studies
③Causes, processes and consequences of international people movements

KO Yiu-Chung

①Ph.D. (Sociology), University of California Santa Barbara, USA
②Studies of Social Mobility Comparative/Analysis of Western and Asia Pacific Societies
③Ethnic relation, social stratification, work and occupation

KONDO Yuichi

①Ph.D. (Speech Communication), University of Minnesota
②Introduction to Intercultural Communication Multiculturalism and Society
③Effects of international education exchange on university student's intercultural communication competence

MANI A.

①Ph.D. (Sociology), University of Wisconsin-Madison, USA
②Changing Social Landscapes in the Asia Pacific
③Education, ethnicity and development in Southeast Asia

MANOPIMOKE Supachit

①Ph.D. (Agricultural and Resource Economics), University of Hawaii, USA
②Environmental Economics
③Economics of health, the environment, and sustainable development

MANTELLIO Peter A.

③Contemporary Ethnographic Cinema

MIYOSHI Koichi

②Doctor of Human Sciences, Osaka University
②Project Evaluation/Project Planning
③Program Evaluation/Community Capacity Development

NAKANO Masahiro

②Touristic Geography and Topography, Area Studies VI (North America)
③American Urban Issues, Cultural Landscape

OHASHI Katsuhiko

②Languages and Cultures of the Asia Pacific
③Applied linguistics

OKADA Toyokazu

②Hospitality Management Tourism Management and Policy
③Tourism Destination Management

PORTER Edgar A.

①Ph.D. (Higher Education Administration), Vanderbilt University
②Traditions and Societies of the Asia Pacific/Introduction to Intercultural Communication
③Asia Pacific Security Issues: Globalization and Higher Education; Modern China

PROGLER Josef

①Ph.D. (Intercultural Studies), State University of New York at Buffalo
③Comparative Culture and Societies; comparative Knowledge Systems

SALAZAR Robert C.

①Ph.D. (Anthropology), The Ohio State University, USA
②Global Networking/Citizen Networking
③Social impact assessment; social forestry; environment; tourism; social capital and social networks

SANGA- NGOIE Kazadi

①Ph.D. (Geophysics), Kyoto University
②Global Environmental Issues; earth science
③Global climate and ecosystems dynamics / eco-climatic change, global warming, tropical rainforests, air-water pollution, natural hazards, wildlife, Africa, GIS and remote sensing

YAKUSHIJI Kimio

②International Law
③International human rights law, State responsibility, international environment law, sovereign immunity

YAMAGAMI Susumu

②Regional Systems of the Asia Pacific
③International politics, comparative politics, area studies in East Asia

YAMAMOTO Fumiko

②Japanese, Teaching Japanese as a Second Language

YOSHIMATSU Hidetaka

①Ph.D. (International Relations), The Australian National University
②Introduction to International Relations, Introduction to Political Science
③International relations, international political economy, regional cooperation in East Asia

YOSHIMOTO Chieko

①Ph.D. (Literature), Central Ethno-University, China
②Chinese
③Comparative study on the history of characters in cultural areas using Chinese characters

Associate Professors

ARII Ken

①Ph.D. (Biology), Canada, McGill University
②Bioscience, natural ecology
③Ecology, ecological modeling, sustainable forest management

ASKEW David J.

②Society and Law/Globalization and Law
③Jurisprudence, history of political thought

BLACKWOOD Thomas S.

①Ph.D. (Sociology), University of Michigan
②Japanese culture, Japan studies, contemporary Japanese studies
③Sociology of Japan, sociology of education, social structure and identity

FUJITA Kayoko

③European commercial expansion and cross-cultural encounters in early modern maritime Asia

GHOTBI Nader

①M.D. Tehran University of Medical Sciences / Ph.D. (Modern economics), Kyoto University
②Bioscience, environment and chemistry, health science, human ecology
③Public health, health economics, HIV, cancer etiology and screening, radiation and cancer, environmental pollution, environmental health

ISHII Yuka

①Ph.D. (Sociology), University of Tsukuba
②Transnational Sociology
③Ethnic relations and human international migration in developing countries

KHAN Muhammad Tahir Abbas

①Ph.D. (Computer Science and Engineering), Kyushu University
③Spread spectrum communications and singleuser / multiuser code division multiple access (CDMA) systems

KOTAKE Yuichi

②Japanese
③International communication

LI Yan

①Ph.D. (Engineering), Kyoto University
②Urban Sociology/Urban Policy
③Urban studies using Geographical information Systems

ODA Kumi

②Cultural Anthropology/Social Theory
③Study on Chinese people in Malaysian cities

PISHVA Davar

①Ph.D. (System Engineering), Mie University
③Biometrics, information security, spectroscopic investigation, image analysis, remote lecturing and effective instructional methodologies

ROSE John A.

①Ph.D. (Engineering), The University of Memphis
②Foundation in Information/Technology/Introduction to Programming
③DNA-based and biomolecular computing; In vitro evolutionary computing; Modeling hybridization error for DNA mixtures, computers, and microarrays, and development of associated Java software.

TANIMURA Susumu

①Ph.D. (Medical Science), Nagasaki University
③Health policy and planning, spatial epidemiology involved in geographic information science

TODOROKI Hiroshi

①Ph.D. (Geography), Seoul National University
②Japanese History/Geography of the Asia Pacific
③Historical heritage and its application for tourism in Korea

Assistant Professors

ASAMIZU Munehiko

①Ph.D. (Science), Obirin University
②Sociology of Tourism/Tourism and Culture
③Ethnic tourism in Australia

ISODA Yuzuru

①Ph.D. (Science), Tohoku University
②Mathematics for Social Sciences Statistics, Geography of the Asia Pacific
③Migration, labour markets and housing markets, Geographical information Systems

SASAGAWA Hideo

①Ph.D. (Area Studies), Sophia University
②Peoples and Religions of the Asia Pacific, East Asian Societies
③Cultural politics in colonial Cambodia

TAHARA Hiroki

①Doctor of Social and Cultural Studies, Nihon University
②Vietnamese
③Vietnamese as a foreign language

TAKASHIBA Yukiko

②International peace studies, international law, the Asia Pacific and human rights

HAN Jiho

- ①Ph.D.(Hospitality and Tourism Management), Virginia Polytechnic Institute & State University
- ③Hospitality marketing, travel behavior, destination marketing, research methods

NISHANTHA Giguruwa G.D

- ①Ph.D.(Information Science), Saga University
- ③CSCW system design, human computer interactive (HCI) systems, persuasive computing, multimedia network programming, high-speed networks, design and performance evaluation of high speed TCP

Senior Lecturer

DAHLAN Nariman

- ②Statistics, Introduction to Information Science
- ③Multimedia and information systems development

Lecturer

HEO Nam Hun

- ②Japanese

HWANG Jung-nan

- ②Korean

IGUCHI Yufu

- ①Ph.D., Tokyo University of Foreign Studies
- ②Malay / Indonesian

SHIMIZU Akiko

- ②Japanese

SHINODA Mitsuko

- ②Japanese for Science Technology
- ③Japanese for Science, Language Games, Scripts Instruction

YOUNG Shirley

- ②English

College of Asia Pacific Management Professors

BERWICK Richard F.

- ①Ed.D. (Language Education), The University of British Columbia, Canada
- ②English Academic Writing
- ③Discourse strategies in second language and culture learning

FUKUTANI Masanobu

- ②Human Resources Management, Industrial Relations
- ③Personnel and labor issues, labor-management relation issue, strategic personal organization theory

IGUSA Kunio

- ②Comparative Economic, Development in the Asia Pacific
- ③Industrial development policies and human resources development in Southeast Asia

IYAMA Osamu

- ②Marketing Research, Consumer Behavior, International Marketing

KIM Chan Hoe

- ①Ph.D. (Literature), Ritsumeikan University
- ②Korean
- ③Comparative study on oral literature mainly by Japanese and Korean

KUHARA Masaharu

- ①Ph.D. (Business Administration), Ritsumeikan University
- ②Corporate Strategy
- ③Management issue of financial Institutions

MAJUMDAR Abdullah-Al-Kafi

- ①Ph.D. (Mathematical Science), Osaka University
- ②Statistics, Mathematics for Social Sciences
- ③Operations Research / Mathematical Programming, Stable Marriage Problem / Smarandache Sequence & Functions

MUTO Koji

- ②Economics and Industries in South and West Asia, Commerce in the Asia Pacific
- ③Islamic economics; economic development of Middle East

NAGAI Shusai

- ②Corporate Finance
- ③Applied corporate finance, corporate governance in Japan

NAKATA Yukihiko

- ①Ph.D. (Engineering), Osaka University
- ②Technology Management, Technological Development and Production System
- ③Management of Technology for the Asia Pacific by researching advanced technologies and industries of displays and semiconductors etc.

NAMBA Masanori

- ②New Business and Entrepreneurship, Technology Management
- ③Management of technology, product development, innovation management, venture management

SINHA Dipendra

- ①Ph.D. (Economics), University of Nebraska-Lincoln, USA
- ②International Economics, Introduction to Economics, Development Economics, Macro Economics
- ③Applied econometrics, international economics and industrial organization

SUZUKI Koji

- ②Investment Strategies in Asia, Financial Markets in Asia
- ③Asian business law, Asian investment strategy

TAKAMOTO Akihiro

- ②International Marketing
- ③International marketing strategy

THOBURN John T.

- ①Ph.D. (Economics), University of Alberta
- ②Globalisation, particularly in the world garment and textile industry; Vietnam, China

TSUNODA Aijiro

- ②Business Law, Legal Strategy in Business
- ③Law and Ethics

UNETANI Takako

- ①Ph.D. (Linguistics), University of Hawaii, USA
- ②Japanese
- ③Analysis of Japanese language and its application to education in Japanese (including distance learning)

WANG Mariner

- ①Ph.D. (International Development), Nagoya University
- ②Logistics in East Asia, Logistics
- ③International logistics system in East Asia

YAMAMOTO Susumu

- ①Ph.D. (International Business), Tokyo Keizai University
- ②Contemporary Business in the Asia Pacific, Introduction to economics, Operation Research
- ③Industrialisation Strategy of Developing Countries, Catch-Up Business of Strategy of Latecomers

YOKOYAMA Kenji

- ①Ph.D. (Business Administration) Ritsumeikan University
- ②International Transaction, Commerce in the Asia Pacific
- ③Correlations between elements in the international trade system

ZHANG Wei-Bin

- ①Ph.D. (Economics), University of Umea, Sweden
- ②Micro Economics, Operations Research
- ③Growth theory, trade theory, urban and regional economics, economic dynamics, ethics, East-Asian philosophy

Associate Professor

CONRAD Harald

- ①Ph.D. (Economics), University of Cologne
- ③Japanese human resource management, social policy, economic aspects of demographic change

DRUMMOND Damon

- ①Ph.D. (Management), Keio University
- ②International Management, Global Human Resource Management, Human Resource Management, Research of Human Resources Management
- ③Global comparative management, human resources management and information systems

GOTO Kenta

- ①Ph.D. (Area Studies)
- ③Development economics, economic development in the Asia Pacific region, global production systems

KONDO Mari

- ①Ph.D. (Human and Environmental Studies), Kyoto University
- ②Human Resources Development in the Asia Pacific, Business Management
- ③International business administration corporate management in Asia

LIU Jung-Ching

- ①Ph.D. (Business Administration), Ritsumeikan University
- ②Business Ethics and CSR, Corporate Governance and Organizational Behavior
- ③Japanese Management and global management, Business Ethics

MAKITA Masahiro

- ①Ph.D. (Business Administration), Ritsumeikan University
- ②Accounting, Intermediate Accounting I, II
- ③Financial Accounting, Hospitality Accounting

SUZUKI Yasushi

- ②Finance, Financial Market & Institutions
- ③The theory of banking and finance, institutional economics, microeconomics (or behavioural economics)

Assistant Professors

FUJIMOTO Takeshi

- ①Ph.D. (Business Administration), Ritsumeikan University
- ②Marketing
- ③Efficient consumer response of food industry in Japan

JEHAN Shahzadah N.

- ①Ph.D. (Business Administration), Hokkaido University
- ②Business Management, International Finance
- ③Investment Evaluation Approaches, Innovative Management Practices

NAKAGAMI Masafumi

- ①Ph.D., Nagoya University
- ③Development economics, health economics

NATSUDA Kaoru

- ①Ph.D. (Economics), University of Sydney
- ③Development economics, asian political economy

SATO Hiroto

- ③Management accounting, capital budgeting

Lecturers

ALLEN Sydney

- ②English

CLASTER William B.

- ②Mathematics, Physics, Statistics

HONG Jieqing

- ②Chinese

SOEJIMA Kenji

- ②Japanese
- ③Teaching Japanese as a Foreign Language

ZHANG Wenqing

- ②Chinese

Professors Emeritus

JIDO Yuji

Former Vice President, Ritsumeikan Asia Pacific University

SAKAMOTO Kazuichi

Former President, Ritsumeikan Asia Pacific University
Professor, Ritsumeikan University

Language Institute

Professor

NISHIKAWA Koji

③Foreign language education at the secondary level

Associate Professors

BLACKWELL James

②English

③Discourse analysis, register analysis, computer assisted-language learning

HONDA Akiko

②Japanese

UMEDA Chisako

②Japanese

Senior Lecturers

BERWICK Taeko

②Japanese

BROWNE Kevin C.

②English

③Language program evaluation, CALL, language testing

CARDA Joel

②English

IDEGUCHI Susumu

①Ph.D. (Cognitive Neuropsychology), Brunel University

②Japanese

③Cross-linguistic studies on reading difficulty (dyslexia)

KATAYAMA Tomoko

②Japanese

③Japanese language (JSL) education, reading comprehension, class analysis

NG Patrick L.C.

①Ed.D. Leicester University

②English, business communication

③Language planning and management, EFL/ESL teaching methodology

SUMIDA Tamaki

②Japanese

Junior Lecturers

AIMKAMON Bunmee

②Thai

BAHAU Simon P.

②English, interpreting

③Intercultural communication, management accounting

BARRERA RODRIGUEZ Francisco Jose

②Spanish

③Acquisition of Spanish articles by Japanese students

HASWELL Christopher G.

②English

③World Englishes, communicative language learning

HOSHINO Tomoko

②Japanese

IIMURO Aki

②English

③Pragmatics, program development and evaluation

ITABASHI Tamiko

②Japanese

③Japanese applied linguistics, language program evaluation

KAJIURA Asako

②English

KOBAYASHI Kiyoko

②Japanese

MANSHO Hiroko

②Japanese

③Modern literature and outlook on Asia

MIYAMA Michisuke

②Japanese

MURAZUMI Shizuka

②Japanese

Neri Sergio G.

②Spanish

③Language-learning methodology and grammar, specifically for Spanish and English

OKAMOTO Teruhiko

②Japanese

PATTISON Steven C.

②English

SASAKI Mie

②Japanese

SUDO Jun

②Japanese

③Phonetics, conversation analysis

TAKEUCHI Maiko

②English

③TESOL, Effect of teaching English to young learners in Japan

TERAJIMA Hiromichi

②Japanese

TOSAKA Yasumi

②Japanese

TRAN Thi Kim Anh

②Vietnamese

WADA Kaori

②English

③SLA, CALL

Ritsumeikan Center for Asia Pacific Studies

CHAWLA Ashok K.

Science-ElI and Head, Translation Services Division & Infrastructure, Indian National Institute of Science and Communication & Information Resources (NISCAIR)

HORMCHONG Twee

Former Senior Vice-President, Siam University

NHUNG Tran Van

Vice-Minister, International Relations Department, Ministry of Education and Training, Vietnam

List of Visiting Professors

College of Asia Pacific Studies

DU REE Mark E.	Chairman, Adecco Ltd. (Japan)
FUNABASHI Yoichi	Chief Diplomatic Correspondent & Columnist, The Asahi Shimbun
HAN Sung-Joo	Professor Emeritus, Korea University
HSIAO Hsin-Huang	Research Fellow, Director of South-East Asia Research Program, Director, Taipei Office, Interchange Association, Japan (IAJ)
IKEDA Tadashi	Ambassador-At-Large, Ministry of Foreign Affairs, Singapore; Chairman, The Institute of Policy Studies
KOHARA Masahiro	Deputy Consul General, Consulate General of Japan in Los Angeles
KOMAI Hiroshi	Professor, Chukyo Women's University
KUMON Shumpei	Executive Research Fellow / Professor Director, Center for Global Communications, International University of Japan
LEE See Young	Republic of Korea Embassy, Diplomacy and Trade Division; President, Jeonju University
OGATA Masakatsu	President, National Institute for Environmental Studies
OHTSUKA Ryutaro	Former Professor, Ritsumeikan Asia Pacific University; Former Executive Vice-President of Japan National Tourist Organization
OKUMURA Hirokazu	Visiting professor, University of Tokyo; Representative, Institute of Future Communities Inc.; Auditor, Infodeliver Co., Ltd.
SATO Yoshiyasu	Advisor, Tokyo Electric Power Co., Ltd.; Advisor, Mitsui Sumitomo Insurance Company, Limited; Former Ambassador of Japan to People's Republic of China
SEN Genshitsu	Former Grand Master, Urasenke Chado Tradition
(SEN Soshitsu XV)	
SETOGUCHI Takeshi	Professor Emeritus, Kyoto University

VOGEL Ezra F.	Research professor, Asia Center, Harvard University
YAMADA Isamu	Professor Emeritus, Kyoto University
YOSHIHARA Kunio	Professor, University of Kitakyushu
YUAN Ming	Professor & Director, Institute of International Relations, Peking University
ZHANG Shengkun	Vice- President, Shanghai Jiao Tong University
ZHANG Yunling	Director, Institute of Asia-Pacific Studies, Chinese Academy of Social Sciences

College of Asia Pacific Management

CHEN Zu-Chung	Chief Auditor, Hua-Hsia Investment Holding Co., Ltd
INOUE Ryuichiro	Professor, Obirin University
KAWAMATA Kunio	Professor, Keio University
LEE Yuan Tseh	President, Academia Sinica; Nobel Prize Laureate in Chemistry (1986)
MONDEN Yasuhiro	Dean, Faculty of Business Administration, Meiji University
NAKAHARA Nobuyuki	Chairman, The American Studies Foundation
NONAKA Ikujiro	Professor, Graduate School Hitotsubashi University
OHTSURU Eisaku	System LSI Producer, Fukuoka Industry Science & Technology Foundation
SHIBATA Hirofumi	Honorary President, International Institute of Public Finance
SOUISSI Mohsen	Assistant Professor, Fayetteville State University
TERASHIMA Jitsuro	President, Mitsui Global Strategic Studies Institute
UCHIDA Yasuo	Professor, Kobe University
YAMASHITA Yoshimichi	Director, Committee of Competitiveness of Key Technology Industries-Japan
YOKOYAMA Hiromi	Advisor, Cydsa Corporation
YOSHIDA Shuichi	Managing Director, GTR Institute Co., Ltd.



Major Employers for the 2006 Academic year

Information is current as of April 1, 2007, and is limited to information volunteered by students.
Some companies and organizations have offered jobs to more than one student.

Accenture Technology Solutions	JCB Co., Ltd.	Olympus Corporation
Acom Co., Ltd.	JGC Plantech Co., Ltd.	Ono Pharmaceutical Co., Ltd.
Adecco Ltd.	Joyfull Co., Ltd.	ORIX Corporation
Aeon Co., Ltd.	JTB Chubu Corporation	Panasonic Communications Vietnam Co., Ltd.
Air Nippon Co., Ltd.	JTB Kyushu Corporation	Pasona Inc.
Aisan Industry Co., Ltd.	JTB Western Japan, Corporation	PT. JAC Indonesia
Ajinomoto Co., Inc.	Kao Corporation	P.T. Sumi Indo Wiring Systems
All Nippon Airways Co., Ltd.	The Keiyo Bank, Ltd.	Rakuten, Inc.
American Family Life Assurance Company of Columbus	Kenko. Com, Inc.	Recruit Co., Ltd.
ANA Air Service Tokyo Co., Ltd.	Kobelco Construction Machinery Co., Ltd	Recruit HR Marketing Inc.
Apple Japan, Inc.	Komeri Co., Ltd.	Rohm Electronics Taiwan Co., Ltd.
Asiana Staff Service, Inc.	Kumon Institute of Education Co., Ltd.	Saishunkan Co., Ltd.
Astem	Kurimoto, Ltd.	Sato Malaysia Electronics Manufacturing SDN BHD
Autobacs Co., Ltd.	Kyoto Century Hotel	Secom Co., Ltd.
Bandai Korea Co., Ltd.	Kyoto Chuo Shinkin Bank	Sekisuiheim Kyushu Ltd.
The Bank of Tokyo-Mitsubishi UFJ, Ltd. New Delhi Branch	Lawson, Inc.	Sekisui House, Ltd.
Calsonic Kansei Corporation	Maersk K. K.	Senko Co., Ltd.
Centrair Passenger Service Co., Ltd	Mainichi Communications Inc.	Seven-Eleven Japan Co., Ltd.
Chiikikagakukenyusyo, Inc.	Matsushita Ecology Systems Co., Ltd.	Sharp Corporation
Chugai Pharmaceutical Co., Ltd.	Matsushita Electric Industrial Co., Ltd.	The Shiga Bank, Ltd.
Citibank, N.A.	Matsushita Electric Industrial Co., Ltd. China	Shin Nippon Air Technologies Co., Ltd.
Clarion Co., Ltd.	McDonald's Japan	Showa Denko K. K.
Club Tourism International Inc.	Meidensha Corporation	Skylark Co., Ltd.
Computer Engineering & Consulting, Ltd.	Meiji Yasuda Life Insurance Company	Softbank BB Corporation
CSK Systems Corporation	Mitsubishi Electric Logistics Corporation	Softbank Human Capital Corporation
The Dai-ichi Mutual Life Insurance Company	Minami Kyushu Coca-Cola Bottling Co., Ltd.	Sompo Japan Insurance Inc.
Dainippon Ink Chemicals, Inc.	Mitsubishi Kagaku Media Co., Ltd.	Sony Global Solutions Inc.
Daiwa House Industry Co., Ltd.	Mitsubishi UFJ Securities Co., Ltd.	SRA Nishi-Nihon, Inc.
Daiwa Securities Co. Ltd	Mitsui Chemicals, Inc.	Sumisho Lease Co., Ltd.
Daiwa Securities SMBC Co. Ltd.	Mitsui & Co., Ltd.	Sumitomo Chemical Co., Ltd.
Dell Inc.	Mitsui & Co. Moscow LLC	Sumitomo Life Insurance Company
Denken Co. Ltd	Mitsui Home Co., Ltd.	Sumitomo Mitsui Banking Corporation
Denso Sales Inda Pvt. Ltd.	Mitsui Sumitomo Insurance (Singapore) Pte Ltd.	Sumitomo Rubber Industries, Ltd.
Denso Sales Korea Corporation	Momotani Juntanken Ltd.	Sumitomo Wiring Systems, Ltd.
Diamond Lease Company Limited	Namcooh Co., Ltd.	Sunstar Engineering Inc.
East Japan Railway Company	NEC Electronics Corporation	Suntory Limited
Emirates Airline	Nichicon Corporation	Suzuka Fuji Xerox Co., Ltd.
En-japan inc.	Nichii Gakkan Company Co., Ltd.	Taisei Corporation
Fast Retailing Co., Ltd.	Nifco Inc.	Technosmile, Inc.
Fuchigami Micro Co., Ltd.	Nihon Kenshi Co., Ltd.	Teijin Limited
Fuji Boeki Co., Ltd.	Nihon Shokken Co., Ltd.	TKC Corporation
Fujitsu Limited	Nikkei Research Inc.	Tokai Rubber Industries, Ltd.
Fuji Xerox Co., Ltd.	Nikko Cordial Securities Inc.	Tokimec Inc.
The Fukuho Bank, Ltd.	Nikon Corporation	Tokio Marine & Nichido Fire Insurance Co., Ltd.
Fukuoka Bank	Nippon Express	Tokiwa Co., Ltd.
Furukawa Automotive Parts Inc.	Nippon Life Insurance Company	Toppan Printing Co., Ltd.
G.A. Consultants Co., Ltd.	Nippon Light Metal Company, Ltd.	Toray Industries, Inc.
Gaiasystem Co., Ltd.	The Nishinippon Shimbun	Tutuanna, Ltd.
Grand Hyatt Tokyo	Nissan Motor Co., Ltd.	Usen Corporation
H.I.S. Co., Ltd.	Nittoku Engineering Co., Ltd.	Venture Link Co., Ltd.
Hisamitsu Pharmaceutical Co., Inc.	Nomura Securities Co., Ltd.	Watami Co., Ltd.
Horiba Stec Co., Ltd.	NSK Micro Precision Co., Ltd.	West Japan Railway Company
Hoshino Resort Inc.	NTT Communications Corporation	Yamaha Motor Co., Ltd.
IBM Japan, Ltd.	NTT Data Corporation	Yamatake Corporation
Imperial Hotel, Ltd.	NTT Data Kyushu Corporation	Yamato Kogyo Co., Ltd.
INAX Corporation	OBS Media 21, Co., Ltd.	Yazaki Corporation
Intelligence, Ltd.	OC Card	YKK AP Inc.
Itochu Techno-Science Corporation	Oita Bank Co., Ltd.	YKK Corporation
JALSKY Kyushu Co., Ltd.	Oita CSK Corporation	Yuasa Trading Co., Ltd.
JALSKY Naha Company, Ltd.	Oita Jinzai Souzou Jigyou Kyoudou Kumiai	
Japan Airlines International Co., Ltd.	Oita Mirai Shinkin Bank	
Japan Trance Ocean Air	Oita Xerox Co., Ltd.	



APU Advisory Committee

As of January 1, 2007

Honorary Committee

Jean Chretien

Former Prime Minister, Canada

Tun Seri Mahathir Bin Mohamad

Former Prime Minister, Malaysia

Natsagiin Bagabandi

Former President, Mongolia

Andreas Van Agt

Former Prime Minister, The Kingdom of the Netherlands

Fidel V. Ramos

Former President, The Republic of the Philippines

Nguyen Thi Binh

Former Vice President, The Socialist Republic of Vietnam

Sheikh Khalifa bin Zayed Al-Nahayan

President, United Arab Emirates

HIRAMATSU Morihiro

Former Governor, Oita Prefecture

International Committee

Hassan Bin Talal

Former Prince, The Hashemite Kingdom of Jordan

Alfonso T. Yuchengco

Chairman, The Yuchengco Group of Companies; Former Ambassador, The Republic of the Philippines to Japan

Chung Mong Joon

Vice-President, Fédération Internationale de Football Association; Former Chairman, Hyundai Heavy Industries

Maurice F. Strong

Member of the Council, University for Peace

Kim Sang-Ha

Honorary Chairman, Korea-Japan Economic Association
Chairman, Sam Yang Corporation

Hyun Myung-Kwan

Former Chairman, SAMSUNG Corporation

Sheikh Nahyan

Minister of Higher Education and Scientific Research, United Arab Emirates; Chancellor, Higher Colleges of Technology (HCT)

Jeffrey L.S. Koo

Chairman, Chinese International Economic Cooperation Association; Chairman & CEO, Chinatrust Group; Chairman & CEO, Chinatrust Financial Holding Co., Ltd.

Boonsithi Chokwatana

Chairman, Saha Group; Chairman of the Executive Board, Saha Pathana Inter-Holding Public Co., Ltd.

Praphad Phodhivorakhun

Chairman, Watana Co., Ltd.

Ambassador Members

Daniel Adan Dziewezowski

Ambassador, Argentine Republic

Alistair Murray McLean

Ambassador, Australia

Peter Moser

Ambassador, Republic of Austria

M. Serajul Islam

Ambassador, People's Republic of Bangladesh

Vladimir Raspudic

Former Ambassador, Bosnia and Herzegovina

Ivan Cannabrava

Former Ambassador, Federative Republic of Brazil

Haji Mohamed Nor bin Haji Jeludin

Former Ambassador, Brunei Darussalam

Blagovest Sendov

Ambassador, Republic of Bulgaria

Ing Kieth

Former Ambassador, Kingdom of Cambodia

Mbella Mbella Lejeune

Ambassador, Republic of Cameroon

Robert G. Wright

Former Ambassador, Canada

Daniel Carvallo

Ambassador, Republic of Chile

Wang Yi

Ambassador, People's Republic of China

Drago Buvač

Former Ambassador, Republic of Croatia

Karel Žebrakovský

Former Ambassador, Czech Republic

Rachad Farah

Former Ambassador, Republic of Djibouti

Adolfo Alvarez Villagomez

Ambassador, Republic of Ecuador

Koang Tutlam Dung

Former Ambassador, Federal Democratic Republic of Ethiopia

Bernhard Zepter

Former Ambassador, Head of Delegation, Delegation of the European Commission in Japan

Ratu Tevita Momoedonu

Former Ambassador, Republic of the Fiji Islands

Bernard de Montferrand

Former Ambassador, France

Henrik Schmiegelow

Former Ambassador, Federal Republic of Germany

Barfuor Adjei-Barwuah

Ambassador, Republic of Ghana

Kyriakos Rodoussakis

Former Ambassador, Greece

Gyula Dabronaki

Ambassador, Republic of Hungary

Manilal Tripathi

Former Ambassador, India

Abdul Irsan

Former Ambassador, Republic of Indonesia

Paul Anthony Robotham

Ambassador, Jamaica

Samir Issa Naouri

Ambassador, Hashemite Kingdom of Jordan

Dennis Noel Oduya Awori

Ambassador, Republic of Kenya

Ra Jong-yil

Ambassador, Republic of Korea

Soukthavone Keola

Ambassador, Lao People's Democratic Republic

Algirdas Kudzy

Former Ambassador, Republic of Lithuania

Michèle Pranchère-Tomassini

Ambassador, Grand Duchy of Luxembourg

Dato' Marzuki bin Mohammad Noor

Former Ambassador, Malaysia

J. John Chikago

Former Ambassador, Republic of Malawi

Miguel Ruiz-Cabanas Izquierdo

Ambassador, United Mexican States

Zamba Batjargal

Former Ambassador, Mongolia

Saw Hla Min

Former Ambassador, Union of Myanmar

Phillip Gibson

Former Ambassador, New Zealand

Adamu Aliyu

Ambassador, Federal Republic of Nigeria

Kamran Niaz

Ambassador, Islamic Republic of Pakistan

Michael Maue

Ambassador, Papua New Guinea

Isao Taoka

Ambassador, Republic of Paraguay

Luis J. Macchiavello

Former Ambassador, Republic of Peru

Domingo L. Siazon Jr.

Ambassador, Republic of the Philippines

Marcin Rybicki

Ambassador, Republic of Poland

Ion Pascu

Former Ambassador, Romania

Alexander Prokhorovich Losyukov

Ambassador, Russian Federation

Tan Chin Tiong

Ambassador, Republic of Singapore

Karunatilaka Amunugama

Former Ambassador, Democratic Socialist Republic of Sri Lanka

Mikael Lindstrom

Former Ambassador, Sweden

Suvidhya Simaskul

Ambassador, Kingdom of Thailand

Salah Hannachi

Ambassador, Republic of Tunisia

Yuriy V. Kostenko

Former Ambassador, Ukraine

Ahmed Ali Hamad Al-Mualla

Former Ambassador, United Arab Emirates

Graham Holbrook Fry

Ambassador, United Kingdom of Great Britain and Northern Ireland

Howard H. Baker Jr.

Former Ambassador, United States of America

Mirsobit F. Ochilov

Ambassador, Republic of Uzbekistan

Chu Tuan Cap

Ambassador, Socialist Republic of Vietnam

Godfrey S. Simasiku

Ambassador, Republic of Zambia

Stuart Harold Comberbach

Ambassador, Republic of Zimbabwe

Managing Directors

TOYODA Shoichiro

Honorary Chairman Member of the Board, Toyota Motor Corporation; Honorary Chairman, Japan Business Federation

SUEMATSU Ken-Ichi

Honorary Advisor, Sumitomo Mitsui Banking Corporation

NISHIJIMA Yasunori

Former President, Kyoto University

SATO Ken

President, Rohm Co., Ltd.

KAWAHARA Shiro

Former Chairman, Daido Life Insurance Company

Executive Directors

HIROSE Katsusada

Governor, Oita Prefecture

HAMADA Hiroshi

Mayor, Beppu City

KAWAGUCHI Kiyofumi

Chancellor, The Ritsumeikan Trust

Committee

AKASHI Yasushi

Representative of the Government of Japan on Peace-Building, Rehabilitation and Reconstruction in Sri Lanka; Former Under-Secretary-General, The United Nations

AKIZAWA Takashi

Senior Executive Counselor, Ishihara Sangyo Kaisha, Ltd.

AKIYAMA Tomiichi

Honorary Advisor, Sumitomo Corporation

AKIYOSHI Toshiko

Jazz Pianist

ANDO Shigetoshi

Chairman of the Board, Hitachi Zosen Corporation

The Advisory Committee was established in May 1996, as an organization that supports APU. Members include heads of states, ambassadors to Japan, and top executives of leading Japanese enterprises. They support APU in various ways, and also provide substantial support for APU graduates seeking employment.

ANZAI Kunio

Senior Corporate Advisor, Tokyo Gas Co., Ltd.

ARAMAKI Yasuo

Special Adviser, Kinden Corporation

EDAMURA Sumio

Former Ambassador to Indonesia; Former Ambassador to Russia

FUJIMURA Hiroyuki

Honorary Chairman, Ebara Corporation

FUJISAWA Tomokichiro

Senior Advisor of the Board, Astellas Pharma, Inc.

FUJITA Hiromichi

Chairman & Representative Director, Toppan Printing Co., Ltd.

FUKADA Yusuke

Writer

FUKUDA Tadashi

Chairperson, THE CHUGOKU ELECTRIC POWER CO., INC.

FUKUHARA Yoshiharu

Honorary Chairman, Shiseido Co., Ltd.

FURUKAWA Junnosuke

Director, Member of the Board Senior Advisor, The Furukawa Electric Co., Ltd.

FURUKAWA Masahiko

Senior Corporate Advisor, Mitsubishi Chemical Corporation

HAMANAKA Shoichiro

Senior Advisor, NIPPON EXPRESS CO. LTD.

HANAWA Yoshikazu

Honorary Chairman, Nissan Motor Co., Ltd.

HATAKEYAMA Noboru

Chairman and CEO, Japan Economic Foundation; Former Chairman, Japan External Trade Organization (JETRO)

HATANAKA Koichi

President, Matsushita Electric Works, Ltd.

HAYASAKI Hiroshi

Senior Advisor, Sumitomo Trust & Banking Co., Ltd.

HIGUCHI Hirotaro

Honorary Alumni, Asahi Breweries, Ltd.

HIRASHIMA Osamu

Chairman of the Board, Taisei Corporation; Vice Chairman of the Board of Councilors, Japan Business Federation

IIZUKA Masaharu

CEO and President, TKC Corporation

IKENOBO Sen'ei

Forty-fifth Generation Ikenobo Headmaster

IMAI Takashi

Senior Advisor, Honorary Chairman, Nippon Steel Corporation; Honorary Chairman, Japan Business Federation

INA Teruzo

Honorary Chairman, INAX Corporation

INAMURA Kazuhiro

Associate, Sumitomo Mitsui Construction Co., Ltd. Former President, Mitsui Construction Co., Ltd.

INOKUCHI Takeo

Former Chairman and CEO, Mitsui Sumitomo Insurance Company, Limited; Vice Chairman, Japan Association of Corporate Executives

INOUE Nobuyuki

Former Mayor, Beppu City

INOUE Noriyuki

Chairman and Chief Executive Officer, Daikin Industries, Ltd.

ISOBE Ritsuo

Senior Adviser, Hakuodo Incorporated

IUE Satoshi

Corporate Senior Advisor, Sanyo Electric Co., Ltd.

IWATANI Tetsuro

Senior Adviser to the Board, Iwatani International Corporation

KANAI Tsutomu

Chairman Emeritus, Hitachi, Ltd.

KATO Hisao

President, TODA CORPORATION

KATSUMATA Tsunehisa

President, The Tokyo Electric Power Co., Inc.

KAWAI Ryoichi

Counselor, Komatsu Ltd.

KAWAKAMI Tetsuro

Senior Advisor, Sumitomo Electric Industries, Ltd.

KAWAMURA Yoshibumi

Counselor, Sankyo Co., Ltd.

KIMBA Akio

Senior Adviser, Keihan Electric Railway Co., Ltd.

KISHIMOTO Yasunobu

Consultant, Showa Denko K.K.

KITAJIMA Yoshitoshi

Chairman of the Board President and Chief Executive Officer, Dai Nippon Printing Co., Ltd.

KITAOKA Takashi

Executive Corporate Adviser, MITSUBISHI ELECTRIC CORPORATION

KITASHIRO Kakutaro

Chairman of the Board, IBM Japan, Ltd.

KOBAYASHI Kohei

Honorary Advisor, Hankyu Corporation

KOBAYASHI Shoichiro

Adviser, The Kansai Electric Power Co., Inc.

KOBAYASHI Yotaro

Chief Corporate Advisor, Fuji Xerox Co., Ltd.

KOHARA Toshihito

Adviser to the Board, NGK INSULATORS, LTD.

KOMORI Shigetaka

President and CEO, Fuji Photo Film Co., Ltd.

KONAGA Keiichi

Senior Corporate Adviser, AOC Holdings, Inc.; Former Vice Minister, The Ministry of International Trade and Industry for Administrative Affairs; Former President, Arabian Oil Company, Ltd.

KONDO Akira

Honorary Advisor, Japan Airlines Corporation

KONO Shunji

Counselor, Tokio Marine and Nichido Fire Insurance Co., Ltd.

KONOIKE Kazusue

Chairman, Konoike Construction Co., Ltd.

KOYAMA Eiichi

Founder, Espec Corp.

KUNIHIRO Michihiko

Former Ambassador to the People's Republic of China; Former Ambassador to the Republic of Indonesia

KUROYANAGI Nobuo

President, The Bank of Tokyo-Mitsubishi UFJ, Ltd.

MAEDA Katsunosuke

Honorary Chairman, Toray Industries, Inc.

MAEDA Yasuji

President, Maeda Corporation Head Office

Mark Du Ree

Chairman, Adecco Ltd.

MATSUDA Masatake

Chairman, East Japan Railway Company

MATSUHASHI Isao

Senior Executive Advisor, JTB Corp.

MATSUSHITA Masaharu

Honorary Chairman and Executive Advisor, Member of the Board, Matsushita Electric Industrial Co., Ltd.

Michael Rauding

Former President, Microsoft Co., Ltd.

MIENO Yasushi

Former Governor, Bank of Japan

MINAGUCHI Koichi

President, Japan Finance Corporation for small and Medium Enterprise

MINO Tetsuji

President, Sumitomo Rubber Industries, Ltd.

MITARAI Fujio

Chairman & CEO, Canon Inc.; Vice Chairman, Japan Business Federation

MIYAKE Akira

Senior Advisor, Mitsui Life Insurance Co., Ltd.

MIYAMURA Shimpei

Chairman and CEO, Mitsui Mining & Smelting Co., Ltd.

MIYAUCHI Yoshihiko

Chairman and CEO, ORIX Corporation

MOGI Yuzaburo

Chairman & CEO, Kikkoman Corporation

MORI Kinjiro

Chairman, Japan Federation of Certified Public Tax Accountant's Associations; President, Asia-Oceania Tax Consultant's Association

MORIOKA Shigeo

Former Chairman, Astellas Pharma, Inc.

MORISHITA Shunzo

President, NIPPON TELEGRAPH AND TELEPHONE WEST CORPORATION; Co-Chairperson, Kansai Association of Corporate Executives

MORITA Kiyoshi

President & CEO, Daiichi Pharmaceutical Co., Ltd.

MURAKAMI Haruo

Advisor, SOFTBANK TELECOM CORP

MURATA Seishiro

President, Maruzen Co., Ltd.

NAITO Akito

Chairman, Rinnai Corporation

NAKAMURA Taizo

Former Senior Advisor, KDDI Corporation

NAKAMURA Masao

President and CEO, NTT DoCoMo, Inc.

NAKAZATO Yoshihiko

Former Advisor, Fuji Electric Co., Ltd.

NARITA Yutaka

Principal Advisor & Chairman of Dentsu Group, Dentsu Inc.

NASU Shoh

Advisor, The Tokyo Electric Power Co., Inc.

NISHIMURA Hidetoshi

Senior Corporate Advisor, Sojitz Corporation

NOMURA Kichisaburo

Executive Advisor, All Nippon Airways Co., Ltd.

OGAWA Susumu

Senior Advisor, Toho Gas Co., Ltd.

OHASHI Mitsuo

Representative Director and Chairman of the Board of Directors, Showa Denko K.K.

OHASHI Nobuo

Chairman & Director, MITSUI & CO., LTD.

OHGA Norio

Executive Advisor, Sony Corporation

OHKUNI Masahiko

Executive Advisor, Oji Paper Co., Ltd.

OHNISHI Masafumi

Senior Advisor, Osaka Gas Co., Ltd.

OKABE Keiichiro

Chairman, Cosmo Oil Co., Ltd.

OKADA Masanori

Nippon Mining & Metals Co., Ltd. President and Chief Executive Officer

OKAMURA Yasutaka

Senior Adviser, International Civil and Commercial Law Centre Foundation; Attorney at Law; Former Prosecutor General Japan

OKAWARA Yoshio

Former Ambassador to the United States; President, Institute for International Policy Studies; President, Association for Promotion of International Cooperation; President, YFU Japan Foundation Inc.; President, The America-Japan Society Inc.

OKAZAKI Masao

Honorary Chairman, Nissay Dowa General Insurance Co., Ltd.

OKUI Isao

Former Chairman, Sekisui House, Ltd. Advisor, Kansai Employers' Association

ONODA Takashi

Standing Advisor, Mitsui Sumitomo Insurance Company, Limited



APU Advisory Committee

As of January 1, 2007

OSAWA Hiroyuki

President, Remote Sensing Technology Centre of Japan; Former Full-Time Member, Council for Science and Technology; Former Vice-Minister for Science and Technology

OTAKE Yoshiki

Founder, Executive Advisor, Aflac Japan

OTSUKA Nobukazu

Former President, Iwanami Shoten, Publishers

OZAWA Mitoshi

Counselor, Sumitomo Heavy Industries, Ltd.

SAKURAI Takahide

Advisor, The Dai-ichi Mutual Life Insurance Company; Vice Chairman of the Board of Councilors, Japan Business Federation

SASAKI Hajime

Chairman of the Board, NEC Corporation

SATO Fumio

Adviser to the Board, Toshiba Corporation

SEKIMOTO Tadahiro

Chairman Emeritus, Institute for International Socio-Economic Studies

SEN Genshitsu (Ph. D.)

Former Grand Master, Urasenke Tradition of Tea; Ph. D. Nankai University, China.; Professor, Department of History, University of Hawaii at Manoa

SETO Yuzo

Advisor to the Board, Asahi Breweries, Ltd.

SHIBATA Kanji

Executive Corporate Adviser, Yamashita Sekkei Inc.

SHIBATA Minoru

Senior Advisor, Toyobo Co., Ltd.

SHIMOZUMA Hiroshi

Chairman, Sumitomo Metal Industries, Ltd.

SHINOZAKI Akihiko

Honorable Adviser, Sumitomo Metal Mining Co., Ltd.

SHIONO Motozo

President, Shionogi & Co., Ltd.

SHUZUI Takeo

Senior Associate, Victor Company of Japan, Limited; Chairman, Japan Initiative for Youth Development

SUGIYAMA Seiji

President & CEO, Mizuho Bank, Ltd.

SUZUKI Toshifumi

Chairman and Chief Executive Officer, SEVEN&I HLDGS.Co., Ltd.

TACHIKAWA Keiji

President, Japan Aerospace Exploration Agency (JAXA)

TAKAHARA Keiichiro

Founder, Chairman, Unicharm Corporation; Chairman of Committee on New Businesses, Japan Business Federation

TAKAHASHI Jiro

Chairman, Meiko Trans Co., Ltd.

TAKAHASHI Osamu

President, Dainichiseika Color & Chemicals Mfg. Co., Ltd.

TANAKA Masuo

Executive Advisor, Kansai paint Co., Ltd.

TANAKA Toshio

Former President, TANABE SEIYAKU Co., Ltd.

TANIMURA Takashi

Senior Advisor, JCB Co., Ltd.

TARUMIZU Kimimasa

President and Chairman of the Board, Plan Japan; Former President, Asian Development Bank

TASHIMA Hideo

Honorary Advisor, KONICA MINOLTA HOLDINGS, INC.

TASHIRO Wa

Senior Adviser, Kintetsu Corporation

TATEMOTO Shoichi

Senior Adviser, Sumitomo Osaka Cement Co., Ltd.

TATSUMI Sotao

Advisor, Sumitomo Mitsui Banking Corporation

TERAZAWA Masao

Former Chairman, Hewlett-Packard Japan, Ltd.

TOYOSHIMA Toru

Honorary Chairman, World Trade Center Tokyo, Inc.; Former Chairman, Japan Economic Foundation; Former Chairman, Japan External Trade Organization

TSUJI Haruo

Corporate Advisor, SHARP Corporation

UJIE Junichi

Chairman, Nomura Holdings, Inc.; Vice Chairperson, Japan Association of Corporate Executives

UMEDA Sadao

Chairman, Kajima Corporation

USHIO Jiro

Chairman and Chief Executive Officer, USHIO INC.

YAMADA Toyohiko

President, Tokyu Construction Co., Ltd.

YAMAGUCHI Nobuo

Chairman of the Board, Asahi Kasei Corporation; Chairman, The Japan Chamber of Commerce & Industry

YAMAMOTO Takuma

Chairman Emeritus, Fujitsu Limited

YAMANAKA Makoto

President, Nankai Electric Railway Co., Ltd.

YAMAOKA Takehito

President, Yanmar Co., Ltd (acceded Jan. 19, 2007)

YOKOUCHI Seizo

President, Kurimoto, Ltd.

YONEKURA Isao

Director Emeritus, ITOCHU Corporation

YUASA Teruhisa

Senior Adviser, GS Yuasa Industry Ltd.

WATANABE Osamu

Chairman and CEO, Japan External Trade Organization

Committee (Kyoto, Shiga)

AOTO Hiroshi

President, Kawashima Textile Manufactures Ltd.

HORIBA Masao

Supreme Counsel, HORIBA, Ltd.

INAMORI Kazuo

Founder and Chairman Emeritus, Kyocera Corporation; Honorary Chairman, The Kyoto Chamber of Commerce and Industry

ISHIDA Akira

Chairman of the Board of Directors Chief Executive Officer; Dainippon Screen Mfg. Co., Ltd.

ITAKA Koshi

Chairman of the Board, Nissin Electric Co., Ltd.

KASHIHARA Yasuo

President, The Bank of Kyoto, Ltd.

MURATA Junichi

Chairman, Murata Machinery, Ltd.; Chairman, The Kyoto Chamber of Commerce and Industry

MURATA Yasutaka

President, Member of the Board of Directors, Murata Manufacturing Company, Ltd.

NATSUHARA Hirakazu

President, Heiwado Co., Ltd.

NISHIHACHIGO Minoru

Senior Corporate Advisor, Shimadzu Corporation

NUNOGAKI Yutaka

President, The Kyoto Chuo Shinkin Bank

SUZUKI Shozo

Chairman & CEO, Nissha Printing Co., Ltd.

TAKAHASHI Sojiro

Senior Adviser, The Shiga Bank, Ltd.; Chairman, Shiga Business Federation; Chairperson Board of Directors; Industrial Support Plaza of Shiga Prefecture; President, Biwako Visitors Bureau(Marketing & Promotion of Tourism & Conventions)

TAKEDA Ippei

President and CEO, Nichicon Corporation

TATEISHI Yoshio

Chairman of the Board, OMRON Corporation

Committee (Kyushu)

AKASHI Hiroyoshi

Chairman, Nishi-Nippon Railroad Co., Ltd.

ANDO Shozo

Director and Counselor, The Oita Bank, Ltd.; Chairman, The Oita Chamber of Commerce and Industry

DATE Shirou

Former Chairman, The Howa Bank, Ltd.

FUJIYOSHI Kazuyoshi

President, Panasonic Communications Co., Ltd.

FUKUSHIMA Tomokatsu

President, Oita Gas Co., Ltd.

FURUSHO Yoshihiro

Representative Chairman of the Board, Tokiwa Department Store Co., Ltd.

HONDA Masahiro

Chairman, The Nishi-Nippon City Bank, Ltd.

IWAKIRI Tatsuro

Former President, Miyazaki Traffic Co., Ltd.

KAMATA Michisada

Chairman, Kyushu Electric Power Co., Inc. Chairman, Kyushu Economic Federation

KAMICHIKA Yoshikuni

Chairman, Representative Director, ECO Institute Co., Ltd.

KAWABE Hiroyuki

Representative President, Kyudenko Corporation

MINEI Masaharu

President, Okinawa Regional Duty Free Shop Co., Ltd.

MURAYAMA Tomiichi

Former Prime Minister of Japan

OGAWA Hiroki

President, Seibu Gas Co., Ltd

SATO Junnosuke

Former Chairman, Sato Benec Co., Ltd.

SHIGEFUCHI Masatoshi

Chairman, TOTO Ltd.

SHISHIMA Tsukasa

Chairman, Fukuoka Cultural Foundation; Chairman, Foundation for Recognition of Investment in the Kyushu/Yamaguchi Region Dean, The Kyushu-Asia Institute of Leadership

TADA Akishige

President, THE NISHINIPPON SHIMBUN CO., LTD.

TANAKA Koji

Chairman, Kyushu Railway Company

TANAKA Kozo

Counselor, The Yamaguchi Bank, Ltd.

TOSHIMA Koji

President, YASKAWA Electric Corporation

TSUKUDA Ryoji

Counselor, The Bank of Fukuoka, Ltd.

YOSHIMURA Yasuaki

President, ASTEM, Ltd.

Advisory Committee

Honorary Committee	8
International Committee	10
Ambassador Members	62
Managing Directors	5
Executive Directors	3
Committee	193
Total	281



Academic Advisors

As of January 1, 2007 except where noted. (Titles have been omitted.)

This is an organization with the purpose of supporting education and research at APU. It consists of a 54 member group of eminent researchers and academics from Japan and overseas. They are sometimes invited to give special lectures and seminars, thereby providing additional incentives to study and perform research at APU.

CALDER Kent E

Director, The Edwin O. Reischauer Center for East Asian Studies,
John Hopkins University, School of Advanced International Studies
(SAIS)

CHAM Tao Soon

Chancellor and Chairman, Board of Trustees, SIM University
Former President, Nanyang Technological University

CURTIS Gerald L.

Professor, Columbia University
Visiting Professor, National Graduate Institute for Policy Studies

DORE Ronald P.

Professor Emeritus, University of London

DRYSDALE Peter

Professor, Australian National University

FUNABASHI Yoichi

Chief Diplomatic Correspondent & Columnist The Asahi Shimbun

HAMASHITA Takeshi

Professor, Ryukoku University (Intercultural Communication)

HAN Sung-Joo

Emeritus Professor, College of Political Science and Economics,
Korea University

HSIAO Hsin-Huang Michael

Research Fellow, Institute of Sociology, Executive Director of
Center for Asia-Pacific Area Studies (CAPAS), Academia Sinica
Professor, National Taiwan University

HUANG Fu-Ching

Adjunct Faculty, Institute of Modern History, Academia Sinica

IKEDA Tadashi

Chief Representative TAIPEI Office
Japan Interchange Association

IMAI Ken-ichi

Senior Fellow, Emeritus, Stanford University
Professor Emeritus, Hitotsubashi University

ISHII Yoneo

President, National Institutes for the Humanities

KANADE Takeo

U.A. and Helen Whitaker University
Professor of Computer Science and Robotics, Carnegie Mellon
University
Director, Quality of Life Technology Engineering Research Center
Director, Digital Human Research Center, National Institute of
Advanced Industrial Science and Technology

KATO Shuichi

Former Guest Professor, Ritsumeikan University (International
Relations)

KIM Dong-Ki

Chair Professor, Graduate School of International Studies, Korea
University

KLEIN Lawrence R.

Benjamin Franklin Professor of Economics Emeritus, University of
Pennsylvania
Nobel Prize Laureate in Economics (1980)

KOH Tommy T.B

Ambassador-at-Large, Ministry of Foreign Affairs, Singapore
Chairman, Institute of Policy Studies

KUMON Shumpei

Director, The New Institute for Social Knowledge and
Collaboration: Kumon Center, Tama University

LEE Won-Sul

Chairman, Korea Federation of Christian School
Chairman, Soongsil University Foundation

LEE Yuan Tseh

President Emeritus and Distinguished Research Fellow Academia
Sinica
Nobel Prize Laureate in Chemistry (1986)

LEES R. Martin

Rector Emeritus, University for Peace

LOEIS Wisber

Former Executive Director, ASEAN Foundation
Former Ambassador of Republic of Indonesia to Japan

McCLAIN David

President
University of Hawaii System

McGEE Terry G.

Professor Emeritus & Former Director, Institute of Asia Research,
University of British Columbia

MILLER William F.

Herbert Hoover Professor Emeritus,
Stanford University

MIYAZAKI Isamu

Former Minister of State for Economic Planning, Japan

MIZUNO Hiroyuki

Deputy Vice President,
Osaka Electro-Communication University

MUNASINGHE Mohan

Distinguished Visiting Professor, University of Colombo
President, Lanka International Forum on Environment and
Sustainable Development
Vice-Chair, Intergovernmental Panel on Climate Change, Geneva

NAKANE Chie

Professor Emeritus, University of Tokyo
Member of Japan Academy

NAMBU Yoichiro

Professor Emeritus, University of Chicago (The Enrico Fermi
Institute)

NGUYEN Minh Hien

Minister of Education and Training, Socialist Republic of Vietnam
Former President, Hanoi University of Technology

NISHIJIMA Yasunori

Former President, Kyoto City University of Arts
Former President, Hanoi University of Technology

OBA Tomomitsu

Director, Japan Center for International Finance

OLDMAN Oliver

Learned Hand Professor Emeritus, Harvard University (Harvard
Law School)

RHEE Seung-Keun

Former President, Daegu Arts University
Former President, Hansung University

RUGGIE John G.

Evron and Jeane Kirkpatrick Professor of International Affairs,
John F. Kennedy School of Government, Harvard University

SATO Yoshiyasu

Advisor, Tokyo Electric Power Co., Ltd.
Vice President, Japan-China Friendship Association
Advisor, Shiseido Co., Ltd.
Former Ambassador of Japan to People's Republic of China

SCALAPINO Robert A.

Robson Research Professor of Government
Emeritus, University of California-Berkeley

SEN Amartya

Lamont University Professor
Professor of Economics and Philosophy, Harvard University
Nobel Prize Laureate in Economics (1998)

SHI Min

Director, Asia-Africa Development
Research Institute of Development
Research Center of State Council, People's Republic of China

SIORIS George A.

President Emeritus, The Asiatic Society of Japan
Ambassador of Greece a.h.

STRANGWAY David W.

President & CEO
Quest University, Canada
Former President & CEO, The Canadian Foundation for Innovation
Former President, University of British Columbia

TERASHIMA Jitsuro

President & CEO Mitsui Global Strategic Studies Institute
Chairman, Japan Research Institute

UMESAO Tadao

Special Advisor, National Museum of Ethnology

Van AGT Andreas

Former Prime Minister, the Netherlands
Former Representative, European Communities to Japan and to
the United States

VILLACORTA Wilfrido V.

Professor, De La Salle University
Deputy Secretary-General, ASEAN

VIRATA Cesar E.A.

Corporate Vice Chairman, Rizal Commercial Banking Corporation
Former Prime Minister & Former Minister of Finance, the
Philippines

VOGEL Ezra F.

Henry Ford II Professor of the Social Sciences Emeritus, Harvard
University

WATANABE Toshio

President, Takushoku University

YAMASHITA Yoshimichi

President, Innovation Research Inc.
Former Chairman, Arthur D. Little (Japan), Inc.

YOSHINO Michael Y.

Professor Emeritus, Harvard Business School, Harvard University

YUAN Ming

Professor & Director, Institute of International Relations, Peking
University

ZHANG Yunling

Director, Institute of Asia-Pacific Studies,
Chinese Academy of Social Sciences

Academic Advisors

Total 54

pplications

All of the following application information is for international students who reside outside Japan. Please note that this differs substantially from application information for international students who reside in Japan.

For full details on how to apply, please see the booklet **Undergraduate Admissions Information & Bachelor's Degree Application Form For International Students Applying From Overseas**, available from the APU Admissions Office.

Number of Students Accepted into Each College (provisional)

		First-year students	Second-year Third-year Transfer students
College of Asia Pacific Studies (Bachelor of Social Science)		300	Variable
Crossover Advanced Program College of Asia Pacific Studies (CAP - APS)	(140)		
Crossover Advanced Program College of Asia Pacific Studies (CAP - APM)	(110)	350	Variable
College of Asia Pacific Management (Bachelor of Business Administration)			

APU will accept applications for either or both colleges on a 1st and 2nd choice basis. Please be aware that there are cases where applicants will not be accepted to the college of their first choice but will be accepted to the college of their second choice. Both colleges are four-year bachelor degree programs. The above figures are tentative intake numbers for the 2008 academic year.

The Joint Program in Science and Engineering: 40 (only first year students are accepted)

See page 25 for the Joint Program in Science and Engineering

Start of Semester

Spring semester: April 1, 2008

Fall semester: September 21, 2008

Application Periods and Method

Applications are accepted throughout the year. Please send your application documents using the Return Envelope enclosed with the Application Form, or apply online.

April 2008 Enrollment Application Deadline:

Official Deadline: **September 30, 2007** Final Deadline: **October 31, 2007**

September 2008 Enrollment Application Deadline:

Official Deadline: **March 31, 2008** Final Deadline: **April 30, 2008**

Application deadlines listed above may differ in the case of recommended applicants from institutions with which Ritsumeikan Asia Pacific University has signed an "Agreement for Recommendation of Students". Applicants who would like to apply as recommended applicants should consult with the recommending institution with which they are affiliated.

*If your application does not arrive by the official deadline, we cannot guarantee that you will be considered for your desired semester of enrollment.



Application Qualifications

Eligible applicants are individuals who fulfill all four application qualifications below

- ① An individual who does not reside in Japan and does not possess Japanese nationality
- ② An individual who is able to qualify for a Status of Residence visa as an international student at APU
- ③ Academic Background:

For First-year Students

- Has completed a standard 12-years of education outside Japan, OR
- Be at least 18 years of age, and hold an International Baccalaureate Diploma or other qualification (course completion certificate) recognized by APU

For Second-year Transfer Students

- Has completed a standard 13-years of education outside Japan, OR
- Was registered as a student at a Japanese university for a year or more and obtained 30 credits or more in the past, OR
- Has completed education at a junior college in Japan in the past, OR
- Has completed education at a technical college in Japan in the past, OR
- Has completed education in the past at a higher vocational school that meets the standards set by the Ministry of Education, Culture, Sports, Science and Technology

For Third-year Transfer Students

- Has completed a standard 14-years of education outside Japan, OR
- Was registered as a student at a Japanese university for two years or more and obtained 60 credits or more in the past, OR
- Has completed education at a junior college in Japan in the past, OR
- Has completed education at a technical college in Japan in the past, OR
- Has completed education in the past at a higher vocational schools that meets the standards set by the Ministry of Education, Culture, Sports, Science and Technology

Apply Online

URL: <http://www.apu.ac.jp/admissions>

- ④ **Basic language ability at the time of enrollment:**
The ability to understand lectures in either Japanese or English

Standard for English basis applicants

A score of 500 points or more of the paper-based TOEFL® (or 173 and 61 for computer-based and internet-based respectively), or a score of 5.5 or higher on the IELTS (Academic)

Standard for Japanese basis applicants

A score of 240 points or more for level 1, or 280 points or more for level 2 on the Japanese Language Proficiency Test (JLPT).

Application Documents

At the time of application, the following documents are required. For details, please see the booklet **Undergraduate Admissions Information & Bachelor Degree Application Form for International Students from Overseas**.

- ① **Bachelor's Degree Application Form***
- ② **Essay**
- ③ **APU Scholarship Application, Student Benefactor Recognition Application**
- ④ **Documents Proving University Enrollment Eligibility**
(High School Diploma etc.)
- ⑤ **Academic Transcripts**
- ⑥ **Certificate of Proficiency in English or Proficiency in Japanese**
- ⑦ **Letter of Recommendation**
- ⑧ **Application Fee of 5,000 yen or US \$44**
- ⑨ **Three photographs**
- ⑩ **Copy of passport** (if available)
- ⑪ **Information for the obtainment of Certificate of Eligibility.**
- ⑫ **Additional documents to submit**
(These vary according to country and region. See the "Undergraduate Admissions Information & Bachelor Degree Application Form for International Students from Overseas" for details).

Screening Process

All applications will be evaluated comprehensively based on the documents submitted. If deemed necessary, the Admissions Office may contact the applicant's school or the person who has written the recommendation letter, may ask the applicant for an explanation regarding their original submitted documents, or may require the applicant to submit additional documents related to their academic background, transcripts, and language proficiency. There may also be cases where an interview is required.

Acceptance / Non-acceptance Notification

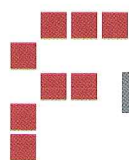
Screening results will be sent to the applicant 6 to 8 weeks after the receipt of all of the requested application documents.

Acquisition of eligibility to stay in Japan as a student (college student visa)

To enter Japan for the purpose of studying as a student, a visa is required. To obtain a visa, applicants need to obtain a "Certificate of Eligibility for Status of Residence" from the Japanese Immigration Bureau. APU will apply for the "Certificate of Eligibility for Status of Residence" on behalf of qualified APU applicants who have paid all the Admission Fees, Tuition Fees, and Dormitory Fees (for people who plan to live at AP House) required prior to admission, and whom APU deems appropriate. The documents that must be submitted are as follows.

- ① **Application for Certificate of Eligibility (provided to accepted applicants)**
- ② **Documents proving that the applicant can pay tuition fees and living expenses during his or her stay**
 - a) **Statement of Financial Support**
 - b) **Financial Sponsor's Bank Account Balance Statement**
 - c) **Documents proving relationship between applicant and financial sponsor**
 - d) **Others, as necessary**

If the financial sponsor is a relative resident in Japan or the applicant is self-funded, separate documents are required. For details regarding acquisition of a visa, please see the pamphlet "Obtaining a Visa" (provided to applicants after acceptance).



From Application to Enrollment

1. You prepare and submit your application to APU.

Please confirm enrollment submission deadlines:
Spring 2008 Official Deadline: September 30, 2007
Final Deadline: October 31, 2007
Fall 2008 Official Deadline: March 31, 2008
Final Deadline: April 30, 2008

2. We screen and process your application.

The admissions office will contact you if your application is incomplete. A decision cannot be made until all requested documents are submitted.

3. Your application is presented to the Admissions Committee

Applications require 6 to 8 weeks to process. Incomplete applications will increase the time required.

Accepted applicants will receive official notification by postal mail.

From the time we receive all necessary documents and invoiced fees it takes 6 to 8 weeks to mail you the Certificate of Eligibility. Due to visa regulations, processing begins 4 months before the beginning of the semester.

4. Accepted students will receive information regarding procedures necessary for a student to receive their visa. Once all required documents, deposits, and invoiced fees are received, APU will apply for your Certificate of Eligibility which you will need to receive a student visa.

5. Once you receive your Certificate of Eligibility, you can then bring it to the closest Japanese embassy or consulate to apply for your student visa. Students should also make an airline ticket reservation well in advance of their departure date.

You arrive at
APU

Expenses at APU

Admission fees and part payment of tuition fees are required before the start of classes.

Application screening fee

For overseas applicants, a once-off fee of US\$44 or 5,000 yen payable at the time of application.

Admission Fee

An invoice for the Admission Fee of 130,000 yen will be mailed together with the Notification of Acceptance. Applicants accepted to APU who wish to enroll must remit the Admission Fee by the date specified on the invoice.

Annual Tuition Fees (applicable from 2008)

Undergraduate Fees

First Year: 1,265,000 yen; Second Year: 1,401,000 yen
Third Year: 1,414,000 yen; Fourth Year: 1,140,000 yen

Fees are based on Tuition A (fixed tuition) and Tuition B (course credits). Graduation requires 124 credits taken over four years. Regardless of time taken to graduate, fees are calculated on an even spread of credits being taken over four years to prevent large fee fluctuations. Tuition B is calculated on the maximum number of credits students are eligible for per semester. Tuition fees from the second year vary according to the previous year's rate of inflation.

For transfer students, the number of credits needed to graduate depends on the number of credits approved by APU.

Tuition fees are reviewed each year.

Graduate School Fees (as of 2007)

N.B The following figures are per year tuition fees for students completing in the standard (non-accelerated) period for completion.

Major	Research Area	Degree Awarded	Annual Fees
Asia Pacific Studies	• Asia Pacific Studies (Contemporary Japan Studies)	• Master of Science in Asia Pacific Studies • Doctor of Philosophy in Asia Pacific Studies	1,400,000 yen
International Cooperation Policy	• Development Economics • International Public Administration (Public Health Management) • Tourism and Policy Administration • Environmental Policy and Administration	• Master of Science in International Cooperation Policy	1,400,000 yen
International Material Flow Management (IMAT)	• Material Flow Management	• Master of Science in International Cooperation Policy • Master of Engineering, University of Applied Sciences, Trier (under application)	1,400,000 yen (additional program fee of 200,000 yen)
Business Administration (MBA)	• Finance • International Business and Marketing • Innovation and Technology Management • Comparative Institution Design for Transition Economy and Business Management	• Master of Business Administration	1,800,000 yen

Dormitory Fees

For details of dormitory fees, please see page 39.

Annual Living Expenses

Living expenses of about one million yen per year are required to live in Japan.

For details of living expenses, please see page 42.

APU Scholarship Programs

Scholarships awarded before enrollment

APU provides tuition reduction scholarships for qualified international students to reduce their financial burden. Scholarship funds are made available through financial contributions from many sources, including Japan's Ministry of Education, Sports, Science, and Technology, as well as domestic and international companies and individuals that support the fundamental ideals of APU. Scholarship recipients must be individuals with excellent grades as well as people who will serve as role models for other students.

- Scholarships provide support for up to 124 credits over four years. However, there is an ongoing review process based on student's performance each semester.
- Application for scholarships can be made together with the general application for admission—no special application procedures are necessary.
- Screening for the APU Scholarship Program is an impartial process, based on a student's academic record. In principle, financial ability is not taken into account.
- Selection is conducted prior to admission. Notification will be sent together with the Notification of Acceptance for admission.

①APU Scholarship Program

These are independent APU scholarship exempting students from 100%, 80%, 65%, 50% and 30% of Tuition Fees, respectively. Students will still be responsible for paying the Admission Fee of **130,000 yen**, airfare to Japan, and living expenses (approximately one million yen per year).

②Honors Scholarship

These are scholarships from Japan Student Services Organization worth approximately 600,000 yen per year (50,000 yen per month). Students will still be responsible for paying the Admission Fee of **130,000 yen**, airfare to Japan and Tuition Fees etc. This scholarship can also be used together with the above APU Scholarships.

*Scholarships are awarded on a semester-by-semester basis and are limited. A set number of new first-year students and second- and third-year transfer students will be awarded scholarships.

*Students selected for a scholarship must complete procedures after admission. Scholarship awarded cannot be changed or upgraded after acceptance.

*The above scholarships are only available to persons who can obtain a student visa for admission to APU.

*International students residing in Japan may not be eligible for scholarships.

Student Benefactor Recognition

APU recognizes students who qualify for an APU scholarship but choose to enroll as a full-fee paying student. This is called Student Benefactor Recognition. This award is given to applicants with outstanding academic results who are recipients of an APU tuition reduction scholarship, but choose not to accept the scholarship and instead enroll as a full-fee paying student. The tuition reduction scholarship amount awarded will instead be used by Ritsumeikan Asia Pacific University to support its educational programs and initiatives. Only those who successfully apply for an APU scholarship are eligible to receive this award.



Scholarships Awarded After Enrollment

In addition to APU's regular scholarships, students at APU may be able to apply for scholarships after enrollment, as listed below. However, these scholarships are limited and cannot be guaranteed before enrollment in APU. The selection process for scholarships is highly competitive; applicants should not assume they will receive a scholarship when making plans for funding their study at APU.



Internal Scholarships

①Emergency Tuition Support

Independent APU scholarship intended for APU students that have experienced some sort of disaster or unexpected circumstance that disrupted their studies. Recipients are given a Tuition Fee exemption of up to 250,000 yen per year.

②Academic Merit Scholarship

Independent APU scholarship providing 100,000 yen to the top-performing student in each semester (for each course and year of admission).

③Incentive Scholarship for Self-motivated Students

Independent APU scholarship providing up to 100,000 yen to four groups or individuals for conducting volunteer activities that have earned high regard outside APU.

④Ando Momofuku Scholarship

This scholarship was founded through the generosity of the late Honorary Doctor Ando, to encourage and support those who have outstanding academic records and personalities and have played a leading role in various activities. It provides support worth 250,000 yen to eight students (four second-year students and four third-year students).

⑤Ando Momofuku Honor Prize

This scholarship established by the late Honorary Doctor Ando provides one million yen to two students scheduled to graduate from APU who meet specific conditions, such as outstanding academic achievements, outstanding records in volunteer activities, or advancement to graduate school in Japan or overseas.

⑥Living Expenses Loan

Independent APU interest-free loan of 20,000 yen for three months for students who are experiencing temporary difficulties in daily life due to unforeseen circumstances.

External Scholarships

External scholarships which current APU students can apply for (2007 academic year)

1. For international students (persons holding a student visa)

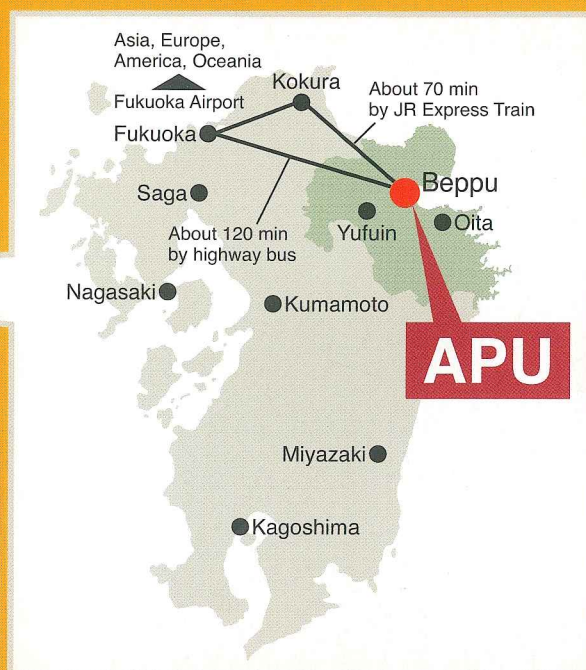
Name	Monthly Amount	Period
Beppu City Scholarship	20,000 yen	One year
Bungoonoshi Scholarship	20,000 yen	Minimum period required for graduation
Heiwa Nakajima Scholarship	100,000 yen	Maximum two years
Honors Scholarship	50,000 yen	Up to one year
The Korean Scholarship Foundation	25,000 yen	One year
Makita Scholarship Foundation	100,000 yen	Two years
Mizuho International Foundation	120,000 yen	Two years
Oita Prefecture Scholarship (for spring enrollees)	25,000 yen	One year
Oita Prefecture Scholarship (for fall enrollees)	25,000 yen	Six months
SEIHO Scholarship	50,000 yen	Maximum two years
Suzaki Scholarship	10,000 yen	One year
Tokushukai Scholarship	100,000 yen	One year

In addition to the above, applications are accepted for the Home-wide Scholarship, Hattori Scholarship, CWAJ Scholarship for Non-Japanese Women, Toka Education and Cultural Exchange Foundation Scholarship, and others.



JAPAN

www.apu.ac.jp/admissions
welcome@apu.ac.jp



APU Overseas Offices / Representatives

There are APU Overseas Offices in the following countries and territories. Students are encouraged to make inquiries at these local offices where possible. Students in other regions should contact the APU Admissions Office directly.

China

Ritsumeikan Liaison Office located in Shanghai Jiao Tong University D, 18F Shen Tong Xin Xi Guangchang, No. 55, Huaihai West Rd., Shanghai City 200030 China
Tel: +86-21-6283-5104 Fax: +86-21-6283-5247
www.apu.net.cn E-mail: shanghai@st.ritsumei.ac.jp

Korea

#505, Halla Classic Officetel 5th Floor, 824-11 Yeoksam-Dong, Kangnam-gu, Seoul, 135-080, Korea
Tel: +82-2-564-3425/3426 Fax: +82-2-564-3427
www.ritsapu-kr.com E-mail: hello@ritsapu-kr.com

India

<Delhi>
Professor Ashok Chawla,
Visiting Professor, Ritsumeikan Center for Asia Pacific Studies
E-mail: chawla189@hotmail.com
<Pune>
Ms. Saeed Haldule
2nd Floor, Shrinath Plaza, Dnyaneshwar Paduka Chowk, Modern College Road, Pune - 411005
Tel: + 91 - 996 - 0222250 (9:00am to 5:30pm India time)
Email: apuindia@apu.ac.jp

Indonesia

APU Indonesia Information Center
Summitmas Tower I, 10th Floor, Jend. Sudirman KAV. 61-62, Jakarta 12190, Indonesia
Tel: +62-21-252-3708/3709 Fax: +62-21-252-3710
www.apu-ina.com E-mail: univrap@pacific.net.id

Philippines

Ms. Aileen Zaballa
The Ichi-Ni-San Nihongo Ctr. Inc.
Unit 1803 Prestige Tower Condo,
F. Ortigas Road Ortigas Center, Pasig City, 1600 Philippines
Tel / Fax : +63-2-635-5751 E-mail: manila@apu.ac.jp

Sri Lanka

Mr. Harin Gunawardena
183/1, Nawala Road, Nugegoda, Sri Lanka
Tel: +94-714251314 E-mail: harin@wow.lk

Taiwan

Chung Shan North Road, Section 2, No. 46, 7F - 5 & 6 Taipei City, Taiwan (R.O.C.)
Tel: +886-2-2523-6852 Fax: +886-2-2523-3910
www.apu.net.cn/tw E-mail: taipei@apu.ac.jp

Thailand

Dr. Tweek Hormchong
Visiting Professor, Ritsumeikan Center for Asia Pacific Studies
99/14 Soi 84 Petkasem Road, Bangkok 10160, Thailand
Tel/Fax: +66-2-413-0275
www.apu-thailand.com E-mail: tweek@apu.ac.jp

Canada

The UBC-Ritsumeikan Academic Exchange Program Office
University of British Columbia
Room 333, Ritsumeikan-UBC House,
6460 Agronomy Road, Vancouver, B.C. V6T 1W9, Canada
Tel: +1-604-822-9501 Fax: +1-604-822-9515
www.ritslab.ubc.ca

Oceania

Mr. Jeremy Breden
TEL: +61-432-531-600 E-mail: oceania@apu.ac.jp



Ritsumeikan Asia Pacific University

Admissions Office, Ritsumeikan Asia Pacific University

ADDRESS: 1-1 Jumonjibaru, Beppu, Oita 874-8577, Japan
TELEPHONE: +81 (Japan)-977-78-1119 FACSIMILE: +81 (Japan)-977-78-1121
URL: <http://www.apu.ac.jp/admissions> E-mail: welcome@apu.ac.jp

Graduate Admissions

URL: www.apu.ac.jp/graduate E-mail: apugrad@apu.ac.jp