

APU

Ritsumeikan
Asia Pacific University

Newsletter

Ritsumeikan Asia Pacific University
[Newsletter]

Opening in April, 2000

1998年9月末日日本国文部省設置認可申請

vol.3

J u l y 1 9 9 8

C O N T E N T S

- p1 ● Yasushi Akashi "In Pursuit of Truths That Transcend National Boundaries"
- p2 ● Professor Kondo "Asian Economic and Currency Problems and the Need for Human Resource Development"
- p4 ● Opening of APU Korea & Indonesia Offices / Introducing Oita-Beppu Office
- p6 ● The Latest Advisory Committee Information
- p7 ● Ritsumeikan Topics
- p8 ● Information

A JOURNAL REPORTING PROGRESS OF RITSUMEIKAN ASIA PACIFIC UNIVERSITY

In Pursuit of Truths That Transcend National Boundaries

Honorary Advisor for Ritsumeikan Asia Pacific University

Yasushi Akashi



It is my belief that the concept to establish Ritsumeikan Asia Pacific University meets the needs of not only Japan and the Asia-Pacific region, but also of the international community. I am pleased to note that the project is making great progress with the encouragement and support of distinguished leaders in various fields.

The new University will provide a rich international environment. With the goal of achieving high academic standards, the University will become a center for pursuing truths by transcending traditional academic fields and national boundaries in a free academic atmosphere. The realization of these ideals through learning, research and communication will surely facilitate progress in international understanding.

I am happy to be a part of this momentous undertaking.

profile Yasushi Akashi

Joined the United Nations in 1957. Became Under-Secretary-General in 1979. Served as Special Representative of the Secretary-General for UNTAC (United Nations Transitional Authority in Cambodia). In 1993 became Special Representative of the Secretary-General for Former Yugoslavia. Departed the U.N in 1997. Served as Visiting Professor at Ritsumeikan University and became Honorary Advisor for Ritsumeikan Asia Pacific University. In March 1998, received Doctorate Degree (International Relations) from Ritsumeikan University.



On June 25, 1998 Dr. Akashi delivered a speech at the Spring Convention of the Ritsumeikan Law Society (Detail on page 8).

Takehiko Kondo

Member, Planning Committee for Ritsumeikan Asia Pacific University
Professor, College of International Relations
Expertise: International Finance

The Asian Economy the Need for Human Resources

Being Assistant Vice Minister, International Affairs, at the Ministry of Finance, Professor Kondo participated as assistant to Finance Minister Takeshita in the G5 meeting held at the Plaza Hotel in New York in 1985. The so-called "Plaza Accord" later had much influence on the international economy. He now places his research emphasis on the "Making of the Plaza Accord" based on his own hands-on experience. In this issue of the APU Newsletter, we asked him how his expertise relates to academic and research at Ritsumeikan Asia Pacific University, and what type of human resources are needed in the Asia Pacific region.

Assistant Professor Masahiro Makita of College of Policy Science interviewed Professor Kondo from the economic point of view on the possibility of Asia-Pacific Studies.

● **MAKITA** First, for background information, please comment on the ongoing Asian economic problem such as the currency crisis.

● **KONDO** The hotly debated Asian currency crisis, if we see it as "panic", may be said to have seen its worst, as presidents change in Indonesia. Nevertheless, it is not over yet. Indonesia is a big player in Asia in terms of population. It has a large economic influence on neighboring countries.

For example, the Korean economy depends highly on the Indonesian economy.

Later, the Asian currency crisis will leave aftereffects such as staggered economic growth, increasing unemployment, and increasing debt in many countries. These aftereffects may create a serious problem. For Indonesia, however, we need to wait a while before we can make judgment on the

situation. It is very unclear and can change suddenly.

● **MAKITA** What lessons can we learn from this economic crisis?

● **KONDO** Many critics call the Asian economic crisis a "21st century type" of crisis, and say the financial system needs to be overhauled. While it is essential to overhaul and strengthen the financial system, we must pay attention to the relation between the US dollar and Japanese yen, which has become very unstable over the last ten years. After the "Plaza Accord" of 1985, transfer of capital became very intense. As a result, the yen-dollar exchange rate has not reflected the real economic situation. One thing is clear, that these unstable circumstances have not had a positive influence on the economies in the Asia-Pacific region. At least, this Asian currency crisis suggests to us that there should be

stable currencies.

● **MAKITA** Based on that view, what do you expect for the economies in the Asia-Pacific region in the 21st century?

● **KONDO** Countries in the Asia-Pacific region are inter-linked socially and economically. Without the linkage, we cannot speak of the future of Japan or the Asia-Pacific region as a whole. This linkage must be based on market mechanisms. In other words, we need to raise the economic efficiency in the Asia-Pacific region by accelerating the speed of deregulation. Also, when we face an economic problem, it is important that we do not treat it as domestic problem but as an issue that needs cooperation among countries in the Asia-Pacific region. Therefore, for the prosperity of the Asia-Pacific region, we will need to stabilize currencies and to develop a new economic framework. In the long-run,

ic and Currency Problems and n Resource Development

the role of APEC may need to be strengthened in terms of stabilizing currencies.

● **MAKITA** What you just mentioned is one of the keys in establishing "Asia-Pacific Studies" at Ritsumeikan Asia Pacific University, isn't it?

● **KONDO** I think so. It is our challenge in the 21st century to establish "Asia-Pacific Studies." From now on, continuing deregulation will bring an age of global mega-competition in which the existing perspectives will be meaningless. It is now necessary that we undertake academic research to elaborate on new social and economic systems.

For instance, we can develop a concept of an "Asia-Pacific Common Currency." This can be one way of pursuing "Asia-Pacific Studies." I have that expectation.

● **MAKITA** For the long-term, is human resource development an important factor in the future of the Asia-Pacific region?

● **KONDO** Absolutely. The currency crisis is a relatively short-term problem. On the other hand, we need to have a long-term plan. For example, it is not adequate to say that because we have an Asian currency crisis, we need this or that type of people. Situations keep changing. The Asia-Pacific region has been developing based on interdependence.

This interdependence will ever



continue to be deep and complex. Also, the Asia-Pacific region is a very culturally-diverse area. Thus, we need to cultivate human resources with flexible modes of thinking, and that understand interdependence and diversity. Of course, they need to be tough both physically, and psychologically, and to be equipped with rich knowledge and information.

● **MAKITA** Is this the kind of people that Ritsumeikan Asia-Pacific University is supposed to nurture?

● **KONDO** That's right. Moreover, I am hoping that many students from the Asia-Pacific region, who are academically sound, independent-minded, and can exercise control over themselves, will seek to prosper at Ritsumeikan

APU. It is my belief that international students will not only contribute to the development of their native countries, but also contribute to the betterment of Japan.

With the motto of "Believe in the future, live for the future" I would like to discuss the future of the Asia Pacific with many students at the 21st century model campus.



Interviewer
Masahiro Makita
Assistant Professor, College of Policy Science
Expertise: Accounting, Business Administration

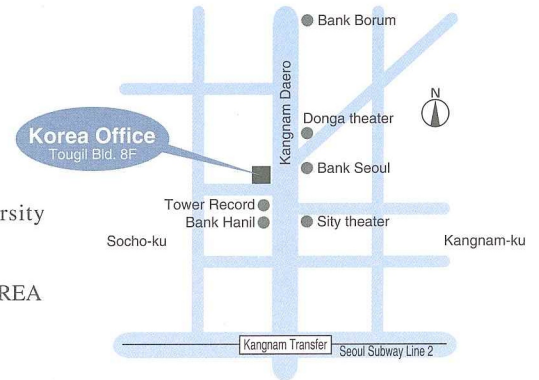
“안녕하세요” “Selamat siang” (Hello)

The First and Second Overseas Representative Offices of APU

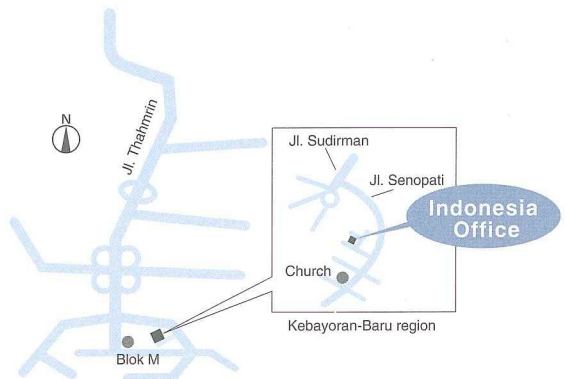
Long-awaited overseas representative offices for APU were opened in Seoul, South Korea on May 18, 1998 and in Jakarta, Indonesia on June 17, 1998. Their goal is to build and maintain a network with high schools, educational institutions, and corporations in addition to providing information on Ritsumeikan Asia Pacific University. They hope to reach you and meet you in Seoul or Jakarta.



Ritsumeikan Asia Pacific University
Office
802 Tougil Bld.1305-8 Socho-ku,
Socho-dong, Seoul, Republic of KOREA
TEL. +82-2-3481-8287/8
FAX. +82-2-3481-8280



Kantor Persiapan Pendirian
Unv. Ritsumeikan Asia Pasifik,
Cabang INDONESIA
No.24 JL. Ciniuru3, Kebayoran-
Baru Jakarta Indonesia
TEL. +62-21-726-1874
FAX. +62-21-725-4310



Step by Step with Sincerity

KIM Jung-Hyun Visiting Professor, Ritsumeikan Asia Pacific Research Center; Director, APU Korea Office

Although South Korea has been experiencing a serious economic crisis lately, it has overcome, in a mere forty years, many obstacles before achieving today's economic development and democracy. South Korea is one of the countries that place a heavy emphasis on education. After the Korean War, many students went to democratic countries such as the United States, Japan, and Europe to pursue education. Upon their return these students helped South Korea become what it is today. There are still approximately 200,000 Korean students studying abroad.

Since last summer we have visited about seventy Korean high schools, the Korean Ministry of Education, and local education authorities. As a result, thirty seven high schools have so far expressed their willingness to sign an agreement on the recommendation of students to APU.

The APU Korea Office opened on May 18, 1998, and is the first overseas representative office for the Ritsumeikan Trust. On its opening day, the Japanese Ambassador to South Korea, corporations, university presidents, and high school principals were among some 100 people who kindly visited the office and gave us warm greetings. The Korea Office is designed to build a network of high school principals and career advisors, to provide students and their parents with information on APU, and to recruit students. We welcome your comments and inquiries.



Answering Voices of Indonesian Students

KIMURA KAZUAKI Professor, College of Letters; Director, APU Jakarta Office

The currency crisis that began in Thailand last year stormed across Asia and Southeast Asian countries. Particularly, it brought a serious economic crisis to Indonesia. In May this year, as you are already aware, President Soeharto stepped down after thirty-two years of rule. In Indonesia, "political reform" moved one step forward. Nevertheless, economic difficulty still continues with increased unemployment, price hikes for daily goods, and increased foreign debt.

In the midst of these difficult circumstances, we opened the APU Jakarta Office in the Kebayoran Baru area in the southern part of Jakarta. Because this area is convenient to transportation, I hope many Indonesian students will drop by.

According to the Director at the AIEJ (Association of International Education, Japan) Jakarta Office, the number of students who visit this office is increasing. It impresses me that many Indonesian students still consider studying abroad. I am fortunate to have a capable local assistant (a graduate of the University of Indonesia, Japanese major). With her assistance, I hope to reach many students in order to provide information on APU and build a cooperative network with various agencies and corporations. Thank you and I hope to hear from you.



Making University Part of the Community

Since its opening last December, Ritsumeikan Oita-Beppu Office has been a forerunner in promoting Ritsumeikan Asia Pacific University in the Oita-Beppu area. In this page, we would like to introduce recent activities coordinated by the Oita-Beppu Office.

"Ritsumeikan Oita Lecture Series" Debuts

The first lecture in the "Ritsumeikan Oita Lecture Series" was held on Saturday, June 13, 1998 at the B-Con Plaza in Beppu City. This series is designed to meet intellectual and cultural interests of the local Oita-Beppu community before the opening of Ritsumeikan Asia Pacific University in order to facilitate exchanges between the local community and Ritsumeikan.

Professor Ikuro Anzai of Ritsumeikan University presented the first lecture titled "Behind ESP - Reason Why A Peace Studies Researcher Criticizes the Occult." Professor

Anzai introduced many examples to show how easily people can be tricked, and emphasized that it is important to view things critically and scientifically. The packed audience was fascinated with his humorous talk and demonstration of ESP. Four lectures a year are being planned in this Series.

This lecture series will be broadcast on local cable television.



Ritsumeikan Asia Pacific University Association of Supporters Holds Yearly Meeting

The Association of Supporters for Ritsumeikan Asia Pacific University is composed of corporations and citizens that support the establishment of Ritsumeikan Asia Pacific University. The Association held its annual plenary meeting on May 16, 1998 at B-Con Plaza in Beppu City.

The meeting was followed by a special speech session which was open to the public. President Takehisa Tsusue of the Association, Governor Morihiko Hiramatsu of Oita Prefecture, Mayor Nobuyuki Inoue of Beppu City, and Executive Vice President Kazuichi Sakamoto of the Ritsumeikan Trust were introduced, which was followed by a speech entitled "Asian Currency Crisis and the Japanese Economy - Proposal for the 21st Century" by Professor Takehiko Kondo of Ritsumeikan University. In his speech, Professor Kondo analyzed the on-going Asian economic crisis and presented an idea to create a common currency in the Asia-Pacific region. Lastly, Dr. Sakamoto and Mr. Akira Ito, Ritsumeikan's Executive Trustee, briefed the audience on the current status of the project to establish Ritsumeikan Asia Pacific University.

●Ritsumeikan Oita-Beppu Office

"We Are Here Already!"



Ritsumeikan Asia Pacific University
Oita-Beppu Office
9-1 Soen-cho
Beppu, Oita 874-0838, JAPAN
TEL. 0977-27-2006
FAX. 0977-27-2008



Three Staffs at Oita-Beppu Office are busy with coordinating the Ritsumeikan project with local governments and communities.

In Support of Ritsumeikan Asia Pacific University

Ambassador members

● Introducing the Newest Ambassador Members (alphabetical order by country)

The Advisory Committee of Ritsumeikan Asia Pacific University consists of heads of state, ambassadors, and prominent business and cultural community leaders in the Asia Pacific region who support the establishment of Ritsumeikan Asia Pacific University. In the first issue of the Newsletter, we introduced Honorary Members and Ambassador Members. In this issue, we introduce new Ambassador Members.

S. M. Rashed Ahmed
Ambassador, Bangladesh

Fernando Guimarães Reis
Ambassador, Brazil

George A. Sioris
Ambassador, Greece

Siddharth Singh
Ambassador, India

S. Khurelbaatar
Ambassador, Mongolia

Kedar Bhakta Mathema
Ambassador, Nepal

Alexander N. Panov
Ambassador, The Russian Federation

Nallathamby Navaratnarajah
Ambassador, Republic of Sri Lanka

Academic advisors

● Introducing Academic Advisors (grouped by non-Japanese and Japanese in alphabetical order)

Academic Advisors support Ritsumeikan Asia Pacific University by providing advice, ideas, and suggestions on administration, curricula, and student life so that the new University will become a true international institution by global standards.

BEY, Arifin
Visiting Professor, University of Malaya

CALDER, Kent E.
Special Advisor to the Ambassador, Embassy of the United States in Japan
Former Professor, Princeton University

CURTIS, Gerald L.
Professor, Columbia University

DONG Fureng (董輔弼)
Honorary Director,
Institute for Economic Research,
Chinese Academy of Social Sciences

DRYSDALE, Peter
Professor & Director,
Australian-Japan Research Centre, Australian National University

HSIAO, Hsin-Huang Michael (蕭新煌)
Research Fellow, Institute of Sociology &
Director, Program for Southeast Asian Area Studies,
Academia Sinica
Professor, National Taiwan University

HUANG Fu-Ching (黃福慶)
Research Fellow, Institute of Modern History,
Academia Sinica
Professor, National Chengchi University

KIM Dong-Ki (金東基)
Professor & Former Dean, Graduate School of International Studies, Korea University
Member, National Academy of Sciences, The Republic of Korea
President, Korea Logistics Society

KLEIN, Lawrence R.
Professor Emeritus, University of Pennsylvania
Nobel Prize Laureate in Economics

KOH, Tommy Thong-Bee
Ambassador-At-Large, Singaporean Ministry of Foreign Affairs
Executive Director, Asia-Europe Foundation
Professor of Law, National University of Singapore

LEE Won-Sul (李元堯)
Chairman, North Asian Council, International Association of University Presidents
Former President, Han Nam University

LEE Yuan Tseh (李遠哲)
President, Academia Sinica
Nobel Prize Laureate in Chemistry

MUNASINGHE, Mohan
Distinguished Visiting Professor, University of Colombo
President, Lanka International Forum on Environment and Sustainable Development
Vice-Chair, Intergovernmental Panel on Climate Change, Geneva

NGUYEN Minh Hien
Minister, Ministry of Education and Training, Vietnam
Former President, Hanoi University of Technology

OLDMAN, Oliver
Professor Emeritus, Harvard University
(Harvard Law School)

RHEE Seung-Keun (李聖根)
Professor & Dean, Graduate School of International Studies, Catholic University of Korea
Former President, Pai Chai University

SIORIS, George A.
Former Ambassador of Greece to Japan
President, Asiatic Society of Japan

SOPIEE, Noordin
Chairman & CEO, Institute of Strategic and International Studies (ISIS), Malaysia

STRANGWAY, David W.
Former President, University of British Columbia

VAN AGT, Andreas
Former Prime Minister, the Netherlands
Former Representative, European Communities to Japan

VERMA, Satya Bhushan
Professor Emeritus, Jawaharlal Nehru University

VILLACORTA, Wilfrido V.
Professor, De La Salle University
President, Yuchengco Center for East Asia

VIRATA, Cesar E. A.
Chairman, Rizal Commercial Banking Corporation
Former Prime Minister & Former Minister of Finance, the Philippines

VOGEL, Ezra F.
Professor & Director, Fairbank Center for East Asian Research, Harvard University

FUNABASHI Yoichi (船橋 洋一)
Editor, the Asahi Shimbun
Former Chief, American General Bureau, the Asahi Shimbun

HAMASHITA Takeshi (濱下 武志)
Professor & Director, Institute of Oriental Culture, University of Tokyo

IMAI Ken-ichi (今井 賢一)
Professor, Stanford University
Chairman, Stanford Japan Center

ISHII Yoneo (石井 米雄)
President, Kanda University of International Studies
Former Director, Center for Southeast Asian Studies, Kyoto University

KATOU Shuichi (加藤 周一)
Visiting Professor (International Relations), Ritsumeikan University

KIDA Hiroshi (木田 宏)
President, New National Theater, Tokyo
Former Vice-Minister of Education, Japan

KUMON Shumpei (公文 俊平)
Executive Director, Center for Global Communications, International University of Japan

MIYAZAKI Isamu (宮崎 勇)
Special Advisor, Daiwa Institute of Research Ltd.
Former Minister of State for Economic Planning, Japan

MIZUNO Hiroyuki (水野 博之)
Advisor, Matsushita Electric Industrial Co., Ltd.
Consulting Professor, Stanford University

NAMBU Yoichiro (南部 陽一郎)
Professor Emeritus, University of Chicago (The Enrico Fermi Institute)

NISHIJIMA Yasunori (西島 安則)
President, Kyoto City University of Arts
Former President, Kyoto University

NONAKA Ikujiro (野中 郁次郎)
Professor & Dean, Graduate School of Knowledge Science, Japan Advanced Institute of Science and Technology (Hokuriku)
Professor, Hitotsubashi University (Institute of Innovation Research)

OGAWA Kazuo (小川 和男)
Director General, Institute for Russian and East European Economic Studies

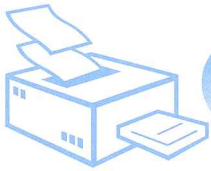
OHBA Tomomitsu (大場 智満)
Chairman, Japan Center for International Finance

TERASHIMA Jitsuro (寺島 実郎)
General Manager, Information & Research Department, Corporate Planning Division, Mitsui & Co., Ltd.

WATANABE Toshio (渡辺 利夫)
Professor, Tokyo Institute of Technology

YAMASHITA Yoshimichi (山下 義通)
Chairman, Arthur D. Little (Japan), Inc.

YAMAZAWA Ipppei (山澤 逸平)
Professor, Hitotsubashi University



TOPICS

Ritsumeikan Hosts UNCRD Training Program

On April 17-18, 1998, Ritsumeikan's International Research Center of Environment and Development, and International Academic Exchange Program jointly hosted the 26th UNCRD (United Nations Center for Regional Development) Training Program at Ritsumeikan University. Twenty

five participants from nineteen countries in Asia, Oceania and Latin America joined special lectures organized by Professors Yano, Iwami and Takao.



Honorary Doctorate Degree Conferred on Ambassador Yuchengco



Ritsumeikan University conferred upon him an honorary doctorate degree on May 20, 1998. President Ohnami of Ritsumeikan University presented him the degree. Ambassador Yuchengco told the audience in his speech about his close relationship with Ritsumeikan

As an Ambassador Member of the Advisor Committee for Ritsumeikan Asia Pacific University, Philippines Ambassador Alfonso T. Yuchengco has been very active in supporting and organizing a network for Ritsumeikan Asia Pacific University. As a way of recognizing his contribution,

ever since he was posted to Japan. He mentioned that Japan to him was as if it were Ritsumeikan and also emphasized the importance of Japan-Philippines relations and Japan's role in the Asia Pacific region.

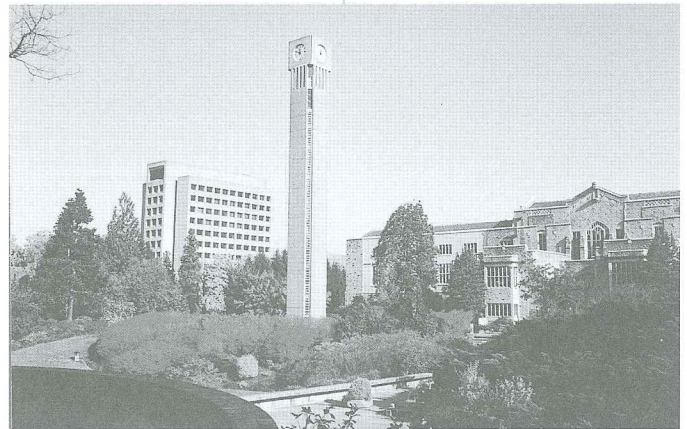
The American University President Visits Ritsumeikan

On June 4, 1998 a delegation from the American University led



by President Ladner and Dean Louis Goodman visited Ritsumeikan University. The purpose of the visit was to sign renewal documents for the dual degree program.

Ritsumeikan - UBC Joint Program Awarded



The Ritsumeikan - UBC Joint Program, jointly administered by Ritsumeikan University and the University of British Columbia, has received from AUCC (Association of Universities and Colleges of Canada) an Award of Excellence for Internationalization in the International Student Participation Division. The Ritsumeikan-UBC joint program sends 100 Ritsumeikan students to UBC each year and they are housed in a dormitory with the same number of Canadian students. Also, faculty members from Ritsumeikan University along with UBC counterparts teach core classes. This program was commended for its unique internationalization concept.

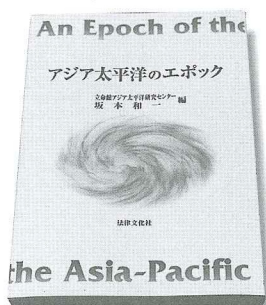


"Jury Courtroom" Relocated to Ritsumeikan University

For a short period of time, before the Second World War, parts of Japan once had a jury system. Although no Japanese courts today use a jury, there are two such court rooms remaining. One of the two was housed in the Kyoto District Court Building. Recently the District Court was to move to a new building but leave the "jury courtroom" behind.



Ritsumeikan University offered to relocate the "jury courtroom" to its campus. The relocated "jury courtroom" reopened on April 23, 1998 with a speech delivered by Mr. Yaguchi, ex-Chief Justice of the Supreme Court. Mr. Yaguchi, in his speech, illustrated the importance of citizen participation in the jury system.



■ "An Epoch of the Asia-Pacific" Published

The book entitled "An Epoch of the Asia-Pacific" (edited by Kazuichi Sakamoto) was published from Horitsu-Bunka-sha. The book records the symposium by the same name held on June 21 and 22, 1997 in Beppu City. The first chapter records the editor's keynote speech, which proposes the possibility of Asia-Pacific Studies. The second chapter covers the plenary session of the symposium. From the third chapter on, the book discusses sustainable development and co-existence through presentations and discussions made in each forum.



■ Symposium in Taiwan, July 14, 1998.

Ritsumeikan University organized a joint symposium on July 14, 1998 in Taipei, Taiwan with National Taiwan Normal University. The theme was "Higher Education in Asia Pacific in the 21st Century." Panelists at the symposium included Dr. Lee Yuan Tseh (Nobel Laureate, President of Academia Sinica), Dr. Huang Fu-Ching (Research Fellow of Academia Sinica), Dr. Hsiao Hsin-huang Michael (Research Fellow of Academia Sinica), and Dr. Kazuichi Sakamoto of Ritsumeikan University. The symposium was open to the public, and particularly targeted high school teachers.



Signing Cooperative Agreement (July 1, 1998)
 left: Dr. Wu Zengshen, Vice President of Zhongshan University
 right: Dr. Masateru Ohnami, President of Ritsumeikan University

■ Expanding Ritsumeikan's International Network

In the last two issues, we introduced universities and institutions with which Ritsumeikan University has agreements. Agreements will be extended to Ritsumeikan Asia Pacific University when it opens. To update the list, there are six new institutions. They are Fudan University, China; Zhongshan University, China; National Chengchi University, Taiwan; Siam University, Thailand; Ateneo de Manila University, Philippines; and the Peruvian Network for Asia-Pacific Studies, Peru.



■ With Professor Yasushi Akashi

Visiting Professor Yasushi Akashi delivered a speech entitled "Internationalization and Japan's Role."

Professor Akashi began his speech with his thoughts on the Nagano Olympics saying "Japanese young people are at the international level in their performance." He continued speaking of the international perception of the Japanese people, of developing internationalization, the 1990's and the end of the Cold War, his experiences in Cambodia and Yugoslavia, peacekeeping in the next century, and Japan's role in the United Nations. He closed his speech saying, "Reflect on history, accept history, and have a balanced thought." The auditorium was packed with students who overflowed to another room which was specially set up to accommodate extra students. Students' responses to the questionnaire were overwhelmingly positive including such comments as: "Easy to understand" and "There was much to learn about understanding the international society."