

# Newsletter

A JOURNAL REPORTING PROGRESS OF RITSUMEIKAN ASIA PACIFIC UNIVERSITY  
TO BE OPENED IN THE YEAR 2000

vol.1  
December 1997

First Issue

## CONTENTS

p2  
Our Objectives Ritsumeikan Asia Pacific University

p4  
Conveying the philosophy of Ritsumeikan Asia Pacific University to the young people of Asia and the world

p5  
Ritsumeikan APU Topics

p6  
Ritsumeikan Topics

p7  
Advisory Committee Members From Around The World

p8  
Ritsumeikan international academic network with 46 universities and institutions in 18 countries throughout the world

**Ritsumeikan Asia Pacific University**  
—where young people from the Asia Pacific region come together to learn.

Established by The Ritsumeikan Trust in 1900, Ritsumeikan University is one of the most prestigious private universities in Japan. It now has campuses in two locations, Kyoto City and Kusatsu City, Shiga Prefecture, with 30,000 students in 8 colleges.

In conjunction with its 100th anniversary, The Ritsumeikan Trust is opening a new international university, to be known as Ritsumeikan Asia Pacific University, in the Japanese city of Beppu in Oita Prefecture in the year 2000. The objective of the university is to provide a place where young people from around the world, especially from the Asia Pacific region, can come together and study.

With the world experiencing rapid innovations in information technology and a dramatic internationalization of business, we are entering a truly borderless era. The range of challenges people take on will grow and develop in the future as people strive to cross borders and overcome cultural differences. What this coming era needs most is people that understand cultural diversity, think globally and act globally. Furthermore, to achieve sustainable growth of the global community and maintain the peaceful coexistence of all the peoples of the world, the cultivation of a new generation of leaders is also becoming increasingly important. Ritsumeikan Asia Pacific University aims to nurture these kinds of individuals with abundant energy and creativity in the Asia Pacific region, and send them out into the world.

We welcome young people from both the Asia Pacific region and other parts of the world who dream of playing a vital role in the development of the international community.



**Kazuichi Sakamoto, Ph.D.**

Executive Vice President, Ritsumeikan University  
President Designate, Ritsumeikan Asia Pacific University

# R i t s u m e i k a n A s i a

## A new type of international university

Our objective is to help nurture students to play various vital roles in the rapidly developing Asia Pacific region. Japanese students and international students from over 50 countries around the world occupy equal halves of the student body. One third of the teaching faculty is non-Japanese, so students get an international and diverse education. Students can start classes in either April or October. The education system of our university has three fundamental characteristics. First, lectures are offered in both English and

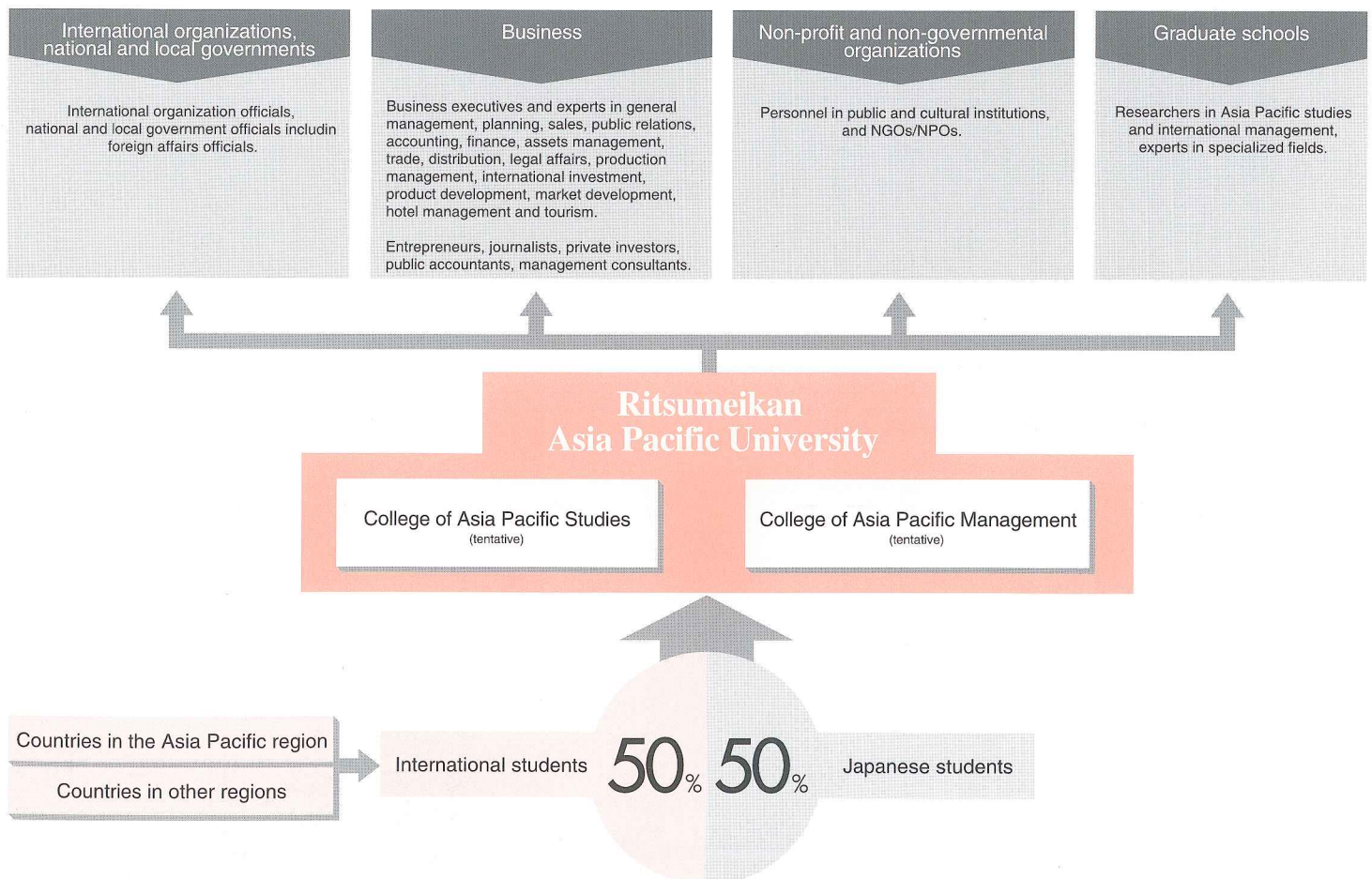
Japanese. Second, students from different countries have the chance to learn from each other and deepen mutual understanding while concentrating on their individual specializations. Third, emphasis is put on students actually applying the knowledge that they accumulate in their studies.

## Two colleges for deeper understanding of the Asia Pacific region

Colleges of Asia Pacific Studies and Asia Pacific Management (tentative)

Our students need to have a deep understanding of cultural diversity in the region, mutual reliance and the dynamism of development. It is important for them to improve their language skills in order to be able to communicate smoothly with others and to develop their

multimedia literacy. In addition to pursuing their majors, students also have the precious chance to learn about cultural diversity and acquire essential intercultural communication skills.



# Pacific University

## College of Asia Pacific Studies

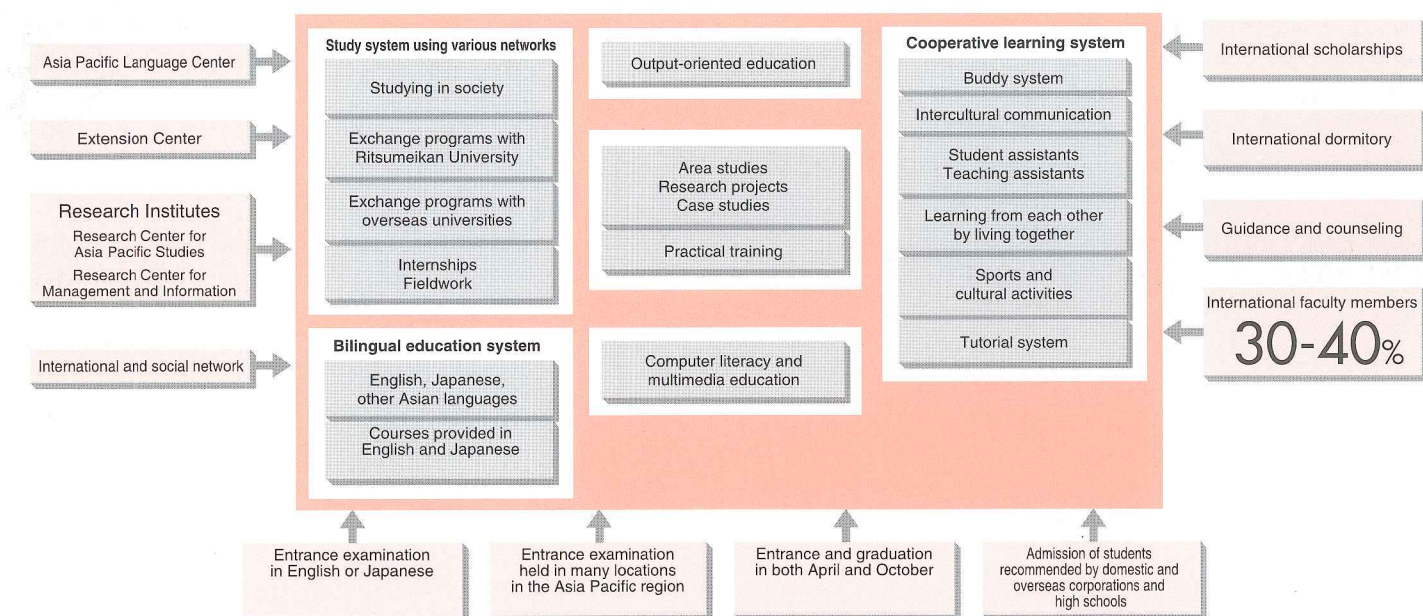
At our College of Asia Pacific Studies, we strive to nurture individuals that understand local culture and also create and develop local industries. To achieve this, students study topics such as sociology, multi-cultural societies, and socio-economic systems in the Asia Pacific region as part of their base curriculum. Major courses include

tourism, information and media, urban planning and environmental protection. In addition to these courses, the college offers area studies for comprehensive understanding of the areas students are interested in, as well as project seminars to help students refine their problem solving skills.

## College of Asia Pacific Management

The College of Asia Pacific Management trains students to take leadership positions in the Asia Pacific business world. Students learn management, management strategies, and business administration in the Asia Pacific region to grasp the fundamentals of

the region's business system. Special studies include corporate finance, production and logistics, and marketing. The college also offers students the chance to do case studies on actual businesses as well as the opportunity to do company internships.



## Attractive campus open to the local community and the world

With the cooperation of public and private organizations, the campus is open to all the peoples of the world.

Responding to a strong request from the local communities of Oita Prefecture and Beppu City who hold a clear vision for the 21st century, Ritsumeikan Asia Pacific University is being established with unprecedented cooperation from public and private organizations. The island of Kyushu is Japan's gateway to the Asia Pacific region both historically and geographically. To enrich this role even more, Oita Prefecture is striving to create a new economic and cultural base for Asia in Kyushu. Beppu City, an international center of tourism, culture, and spa resorts, is expected to see large development in the near future as well. Ritsumeikan Asia Pacific University will be constructed in Jumonjibaru, Beppu, an area

blessed with lush natural surroundings and many panoramic ocean views.

Students from over 50 countries around the world will have the opportunity to cultivate their intelligence and sensitivity, as well as friendship and trust at a campus that was designed to harmonize with nature.



# Conveying the philosophy of Ritsumeikan Asia Pacific University to the young people of Asia and the world.

Visiting 12 countries in the Asia Pacific region



**Yuji Jido, Ph.D.**

Executive Trustee, Academic Affairs  
The Ritsumeikan Trust,  
Vice President Designate,  
Ritsumeikan Asia Pacific University

Thank you for your hospitality and assistance when we visited you this summer. We really appreciated the warm welcome we were given and would like to tell you about our trip.

Ritsumeikan staff visited twelve countries to convey the philosophy of Ritsumeikan Asia Pacific University to as many people as possible and ask them for their cooperation and support. We visited over 400 institutions in China, Korea, Taiwan, Malaysia, Indonesia, Thailand, Singapore,



Philippines, Vietnam, Australia, New Zealand and India. The institutions we visited included national and regional educational institutions, universities, high schools, educational foundations, research bodies and private companies. Every institution greeted us with a warm welcome, listened to what we had to

say, and gave us their valuable opinions. Most of them supported our philosophy and agreed to continue further discussions on concrete cooperation and exchange activities.



Our visit was significant for the following reasons:

1. We received straightforward opinions on the current status and system of Japanese universities. Those opinions were very valuable and definitely worth the time and effort we spent collecting them. Through the exchange of opinions, we were also able to establish a strong foundation of cooperation with many of the various institutions we visited.
2. A total of 150 national and regional institutions, educational institutions and related organizations including more than 100 high schools showed a favorable response toward the idea of sending their students to our institution.
3. All of the universities and research institutions showed a

## A word from our delegates

### ● CHINA

Many of the national and regional government organizations and educational institutions we visited are in favor of the philosophy and plans of Ritsumeikan Asia Pacific University. Many schools also showed a favorable attitude toward doing an exchange program involving their university and high schools. We were deeply impressed by this warm response.

### ● KOREA

We visited 30 organizations including joint ventures between Korean and Japanese corporations. One

of the Japanese affiliated companies agreed to recommend some students to study at Ritsumeikan Asia Pacific University on the company's scholarships. Other companies also expressed their willingness to consider such agreement. Encouraged by those we met, our realization that our project contributes to the development of a peaceful relationship between Korea and Japan was strengthened.

### ● MALAYSIA

Many students pursue their studies at universities in Western countries. However, it was encouraging for us to find some schools that

immediately agreed to recommend students to the new university. To commemorate their 40th anniversary of independence, Malaysian flags were raised everywhere. We were very impressed by the fast-paced development of Malaysia and reaffirmed our pledge to make Ritsumeikan Asia Pacific University a success.

### ● INDONESIA

We visited 34 institutions including high schools, Japanese language schools, companies and government offices in Jakarta and various other areas, and five of them promised to send students to

study at Ritsumeikan APU. The high school teachers we talked to seemed very interested in what we had to say, and commented that it was the first time they had ever been visited by staff from a Japanese university. Since Indonesia and Japan have always had a very strong relationship, both historically and economically, we feel that exchange between the two countries is very important and look forward to receiving as many Indonesian students as possible.

### ● THAILAND

Since a lot of high schools in

Thailand offer Japanese courses, many students are interested in Japan and told us some of the things they dream of doing in the future. Many of the teachers we talked to promised to encourage students to study in Japan. What they seemed most interested in was that Ritsumeikan Asia Pacific University offers bilingual lectures and scholarships as well. Ritsumeikan is determined to set up scholarships in an effort to encourage students who want to study in Japan.

### ● THE PHILIPPINES

Enjoying a hearty welcome, we visited 15 schools, 4



favorable response toward exchanging educational and research information, enabling us to expand our international network.

4. Many private companies and organizations pledged to assist us by taking in intern students and offering scholarships and job opportunities.

We all have very strong hopes and expectations for Ritsumeikan Asia Pacific University, and we are confident that it will become an important institution that contributes to the peace, prosperity and togetherness of the Asia Pacific region. We are determined to visit many other countries in the region, too, with the goal of creating a university that has a strong

international network as its foundation.

Thank you for your continued support and candid advice.



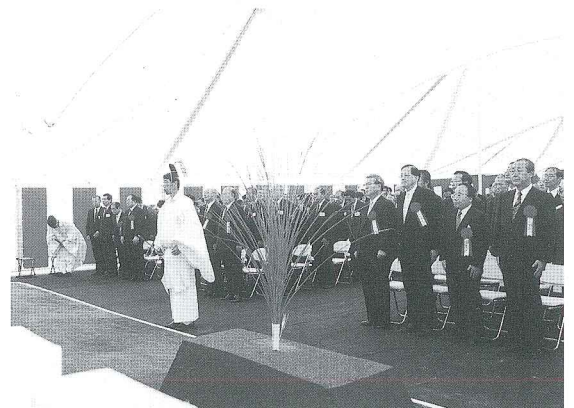
# RITS APU TOPICS



## The campus ground-breaking ceremony



The Ritsumeikan Asia Pacific University ground-breaking ceremony took place in Jumonji-hara, Beppu City, Oita Prefecture on October 18th, 1997, with the university scheduled to open in April 2000. The ceremony was held, with over 200 people including Morihiko Hiramatsu, Governor of Oita Prefecture; Nobuyuki Inoue, Mayor of Beppu City; Masateru Ohnami, President of Ritsumeikan University; Hachiro Kawamoto, Chairman of the Ritsumeikan Board of Trustees; Kazuichi Sakamoto, President Designate of Ritsumeikan Asia Pacific University. President Ohnami gave a short speech at the event, and pledged his determination to establish a university that is a model for the 21st century.



## Opening of the local Ritsumeikan Oita/Beppu Office

With construction all ready to begin, a Ritsumeikan Oita/Beppu Office was set up in Beppu City, Oita Prefecture to strengthen collaboration between Ritsumeikan and the local community.



companies and 6 organizations including the Ministry of Education. All of the high schools we visited were interested in sending students to Japan. We are determined to work hard to establish a university where many Filipino students can study.

### VIETNAM

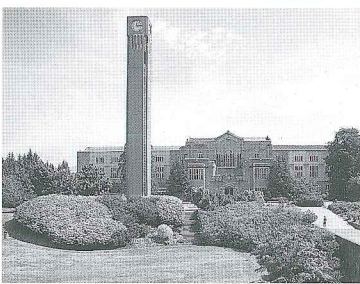
Since education is a national issue, the government is focused on human resource development and has agreed to support the sending of worthy students to Japan. The government also requested aid for its students since many of them have financial difficulties.

### AUSTRALIA&NEW ZEALAND

In recent years, interest in Japan has increased greatly among people in both Australia and New Zealand, and Japanese language education has been developing rapidly. The most popular second language to study in both countries is Japanese. Most high schools welcomed us and agreed to cooperate with our project. In addition, one of the educational foundations in New Zealand promised to consider setting up a fund to assist students with their travel expenses to Japan.



**CANADA**



**UBC awards President Ohnami an Honorary Ph.D.**

On May 30, 1997, President Ohnami was awarded an Honorary Ph.D. of Law by President Strangway of Canada's University of British Columbia at the institution's commencement ceremony. Since 1987, UBC and Ritsumeikan University have played a leading role in international exchange by conducting various overseas seminars, one year student exchange programs, and beginning in 1991 the UBC-Ritsumeikan Joint Program. UBC awarded President Ohnami the degree to praise his great achievements in his field of study, as well as for his contribution to Japanese higher education, international academic exchange, and relations between the two universities.

**PHILIPPINES**

**President Ohnami becomes an Honorary Consulate General of the Republic of the Philippines.**

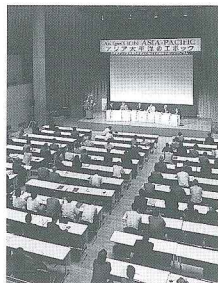
President Ohnami accepted a request from Philippine Foreign Affairs Minister Domingo L. Sison, Jr., for him to become an Honorary Consulate General of the Republic of the Philippines. On March 10th, 1997, the president took his oaths in the presence of Philippine Ambassador Alfonso T. Yuchengco.



**"The Epoch of Asia Pacific" International Academic Symposium**



The international academic symposium "The Epoch of Asia Pacific" was held on June 21-22, 1997. A total of 20 panelists from both in and outside of Japan from the fields of education, business and mass media were invited to the symposium. They had a constructive discussion on the establishment of an Asia Pacific studies program, the cultivation of qualified human resources for the 21st century, and the role that Ritsumeikan Asia Pacific University needs to play in Asia.



the keynote address by President Ohnami, Dr. Lee lectured on tasks necessary to further develop the Asian economy, while Dr. Lehn explained the prospects of supermolecular engineering. The two panelists and the president then exchanged opinions on the necessity of global-scale scientific studies.

**Ritsumeikan's Rugby Team holds an exchange with Korea's Kyung Hee University**

The rugby teams of Ritsumeikan and Kyung Hee University faced off twice on May 22, 1997. Although Ritsumeikan scored the first try, Kyung Hee, ranked second in the Korean university league (spring 1997), walked off with victory in both matches. Exchanges in football, basketball and traditional artistic performances have already been held between the two universities.



**Nobel Forum "Dreams and Expectations in Asian Science in the 21st Century"**



On May 15, 1997, the Nobel Forum, to which Nobel Prize laureates were invited, took place under the title of "Dreams and Expectations in Asian Science in the 21st Century". Invited panelists were Dr. Y.P. Lee, physicist and president of Academia Sinica in Taiwan, and Dr. Jean-Marie Lehn, biochemist and professor of Université de Louis Pasteur in France. After

**Ritsumeikan's China Study Club holds an exchange with Peking University in China**

On February 18-26, 1997, the Ritsumeikan China Study Club visited Peking University to conduct a study exchange with that university's Japanese Language Club. The club consists of about 40 students and focuses on studying Chinese poetry, language and culture. The club visited China to attain firsthand experience and to exchange ideas with Chinese students.



# Advisory Committee Members From Around The World

Ritsumeikan Asia Pacific University Advisory Committee members consist of heads of state, ambassadors and prominent members of the economic and cultural community in the Asia Pacific region who are in agreement with the objectives of the university.

## Honorary Committee



**Shankar Dayal Sharma**  
President, India



**Soeharto**  
President, The Republic of Indonesia



**Dr. Mahathir Mohamad**  
Prime Minister, Malaysia



**Andreas Van Agt**  
Former Prime Minister, The Kingdom of the Netherlands



**Alberto Fujimori F.**  
President, The Republic of Peru



**Fidel V. Ramos**  
President, The Republic of the Philippines



**Banharn Silpa-Archa**  
Former Prime Minister, The Kingdom of Thailand

## Ambassador Members



**José Ramón Sanchis Muñoz**  
Ambassador, The Argentine Republic



**Ashton Calvert**  
Ambassador, Commonwealth of Australia



**Wisber Loeis**  
Ambassador, The Republic of Indonesia



**Truong Mealy**  
Ambassador, Kingdom of Cambodia



**Tazhee Kim**  
Ambassador, The Republic of Korea



**Thongsay Bodhisane**  
Ambassador, The Lao People's Democratic Republic



**Manuel Uribe**  
Ambassador, The United Mexican States



**U Soe Win**  
Ambassador, The Union of Myanmar



**Maarten L. Wevers**  
Ambassador, New Zealand



**Aiwa E. Olmi**  
Ambassador, Papua New Guinea



**Victor Aritomi**  
Ambassador, The Republic of Peru



**Alfonso T. Yuchengco**  
Ambassador, The Republic of the Philippines



**Chawat Arthayukti**  
Ambassador, The Kingdom of Thailand



**Nguyen Quoc Dzung**  
Ambassador, The Socialist Republic of Vietnam

## Executive Directors

**Hirotaro Higuchi**  
Chairman of the Board of Asahi Breweries, Ltd. and Vice Chairman of the Japan Federation of Economic Organizations

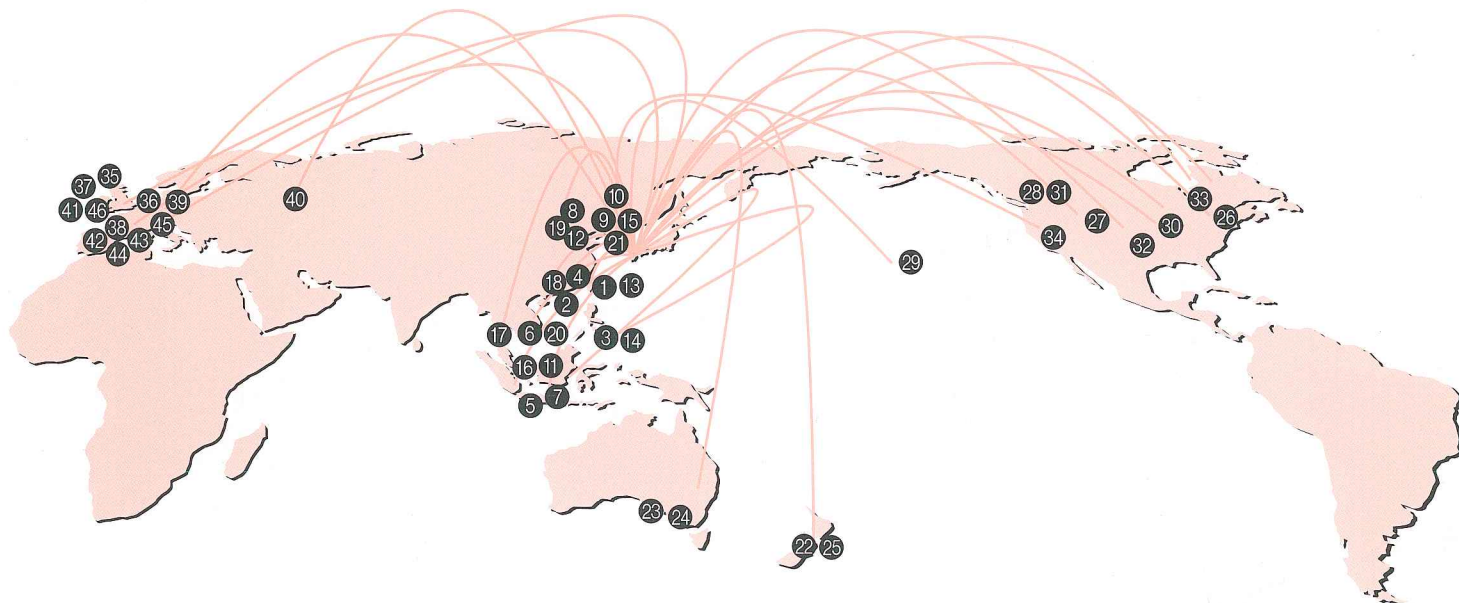
**Morihiko Hiramatsu**  
Governor, Oita Prefecture

**Masateru Ohnami**  
President, The Ritsumeikan Trust and Ritsumeikan University

In addition to the above members, 180 prominent persons from various fields have become Advisory Committee members as of November 1, 1997.

# Ritsumeikan International Academic Network With 46 Universities and Institutions in 18 Countries Throughout The World

Ritsumeikan Asia Pacific University has built an international network with overseas universities and institutions in the Asia Pacific region and many other areas of the world to strengthen education and research as it looks toward the era of globalization. Sustained by this global network, the university aims to become "the center of excellence" of Asia Pacific studies in order to foster ongoing peaceful development of the region. Ritsumeikan University now has exchange and/or cooperative programs with 46 universities and institutions in 18 countries throughout the world.



- |                                                                                                                                                                                                                                                                                                                                                                                                                                                                                                                                                                                                                                                                                                                                                                                                                                                                                                                 |                                                                                                                                                                                                                                                                                                                                                                                                                                                                                                                                                                                                                                                                                                                                                                                                                                                                                                       |                                                                                                                                                                                                                                                                                                                                                                                                                                                                                                                                                                                                                                                                                                                                                                                                                                                                                                                                                                                        |
|-----------------------------------------------------------------------------------------------------------------------------------------------------------------------------------------------------------------------------------------------------------------------------------------------------------------------------------------------------------------------------------------------------------------------------------------------------------------------------------------------------------------------------------------------------------------------------------------------------------------------------------------------------------------------------------------------------------------------------------------------------------------------------------------------------------------------------------------------------------------------------------------------------------------|-------------------------------------------------------------------------------------------------------------------------------------------------------------------------------------------------------------------------------------------------------------------------------------------------------------------------------------------------------------------------------------------------------------------------------------------------------------------------------------------------------------------------------------------------------------------------------------------------------------------------------------------------------------------------------------------------------------------------------------------------------------------------------------------------------------------------------------------------------------------------------------------------------|----------------------------------------------------------------------------------------------------------------------------------------------------------------------------------------------------------------------------------------------------------------------------------------------------------------------------------------------------------------------------------------------------------------------------------------------------------------------------------------------------------------------------------------------------------------------------------------------------------------------------------------------------------------------------------------------------------------------------------------------------------------------------------------------------------------------------------------------------------------------------------------------------------------------------------------------------------------------------------------|
| <p><b>[ Asia ]</b></p> <ul style="list-style-type: none"> <li>① Institute of Modern History, Academia Sinica [Taipei]</li> <li>② The Chinese University of Hong Kong [Hong Kong]</li> <li>③ De La Salle University [Manila]</li> <li>④ East China Normal University [Shanghai]</li> <li>⑤ Gadjah Mada University [Yogyakarta]</li> <li>⑥ Hanoi National University of Technology [Hanoi]</li> <li>⑦ University of Indonesia [Jakarta]</li> <li>⑧ Jilin University [Changchun]</li> <li>⑨ Korea University [Seoul]</li> <li>⑩ Kyung Hee University [Seoul]</li> <li>⑪ University of Malaya [Kuala Lumpur]</li> <li>⑫ Nankai University [Tianjin]</li> <li>⑬ National Taiwan Normal University [Taipei]</li> <li>⑭ University of The Philippines [Quezon City]</li> <li>⑮ Seoul National University [Seoul]</li> <li>⑯ Institute of Strategic and International Studies (ISIS) Malaysia [Kuala Lumpur]</li> </ul> | <ul style="list-style-type: none"> <li>⑰ Thammasat University [Bangkok]</li> <li>⑱ Tongji University [Shanghai]</li> <li>⑲ Tsinghua University [Beijing]</li> <li>⑳ Hanoi National University [Kanoi]</li> <li>㉑ Yonsei University [Seoul]</li> </ul> <p><b>[ Oceania ]</b></p> <ul style="list-style-type: none"> <li>㉒ The Asia 2000 Foundation of New Zealand [Wellington]</li> <li>㉓ Macquarie University [Sydney]</li> <li>㉔ The University of Melbourne [Melbourne]</li> <li>㉕ Victoria University of Wellington [Wellington]</li> </ul> <p><b>[ America ]</b></p> <ul style="list-style-type: none"> <li>㉖ American University [Washington, DC]</li> <li>㉗ APSIA<br/>(Association of Professional Schools of International Affairs)</li> <li>㉘ The University of British Columbia [Vancouver]</li> <li>㉙ University of Hawaii [Honolulu]</li> <li>㉚ Illinois College [Jacksonville]</li> </ul> | <ul style="list-style-type: none"> <li>㉛ Okanagan University College [Kelowna]</li> <li>㉜ The University of Oklahoma [Norman]</li> <li>㉝ University of Pittsburgh [Pittsburgh]</li> <li>㉞ University of Southern California [Los Angeles]</li> </ul> <p><b>[ Europe ]</b></p> <ul style="list-style-type: none"> <li>㉟ The University of Edinburgh [Edinburgh]</li> <li>㊱ Humboldt University of Berlin [Berlin]</li> <li>㊲ University College London [London]</li> <li>㊳ University of Paris I, Pantheon - Sorbonne [Paris]</li> <li>㊴ Polish Academy of Sciences [Warsaw]</li> <li>㊵ Institute of Oriental Studies, Russian Academy of Sciences [Moscow]</li> <li>㊶ University of Sussex [Brighton]</li> <li>㊷ University of Toulouse Le Mirail [Toulouse]</li> <li>㊸ Toulouse University of Social Sciences [Toulouse]</li> <li>㊹ Tours Graduate School of Business [Tours]</li> <li>㊺ University of Tubingen [Tubingen]</li> <li>㊻ The University of Warwick [Coventry]</li> </ul> |
|-----------------------------------------------------------------------------------------------------------------------------------------------------------------------------------------------------------------------------------------------------------------------------------------------------------------------------------------------------------------------------------------------------------------------------------------------------------------------------------------------------------------------------------------------------------------------------------------------------------------------------------------------------------------------------------------------------------------------------------------------------------------------------------------------------------------------------------------------------------------------------------------------------------------|-------------------------------------------------------------------------------------------------------------------------------------------------------------------------------------------------------------------------------------------------------------------------------------------------------------------------------------------------------------------------------------------------------------------------------------------------------------------------------------------------------------------------------------------------------------------------------------------------------------------------------------------------------------------------------------------------------------------------------------------------------------------------------------------------------------------------------------------------------------------------------------------------------|----------------------------------------------------------------------------------------------------------------------------------------------------------------------------------------------------------------------------------------------------------------------------------------------------------------------------------------------------------------------------------------------------------------------------------------------------------------------------------------------------------------------------------------------------------------------------------------------------------------------------------------------------------------------------------------------------------------------------------------------------------------------------------------------------------------------------------------------------------------------------------------------------------------------------------------------------------------------------------------|

## From the editor

This newsletter is issued to inform young people whose destiny is closely tied to the future of the Asia Pacific region of our philosophy and the new university's plans.

The centennial celebration in the year 2000 will have a special meaning for Ritsumeikan. Based on our philosophy of "liberalism and internationalism" and "peace and democracy", we are determined to establish Ritsumeikan Asia Pacific University to meet the requirements of the fast-approaching 21st century.

You are invited to read this newsletter and share in the philosophy and plans of Ritsumeikan Asia Pacific University. We welcome your opinions and comments, and promise in return to develop this new university by carefully listening to the wishes and expectations of the people of the Asia Pacific region.

URL <http://www.ritsumei.ac.jp/kic/a31/>